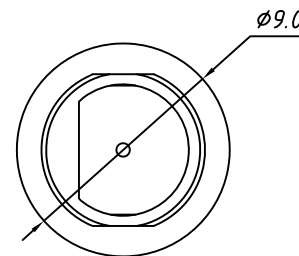
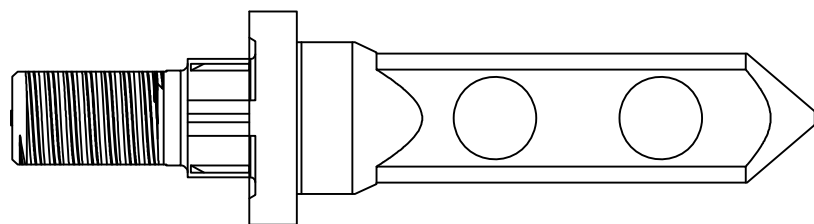
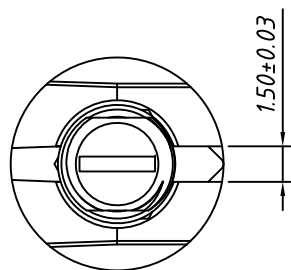
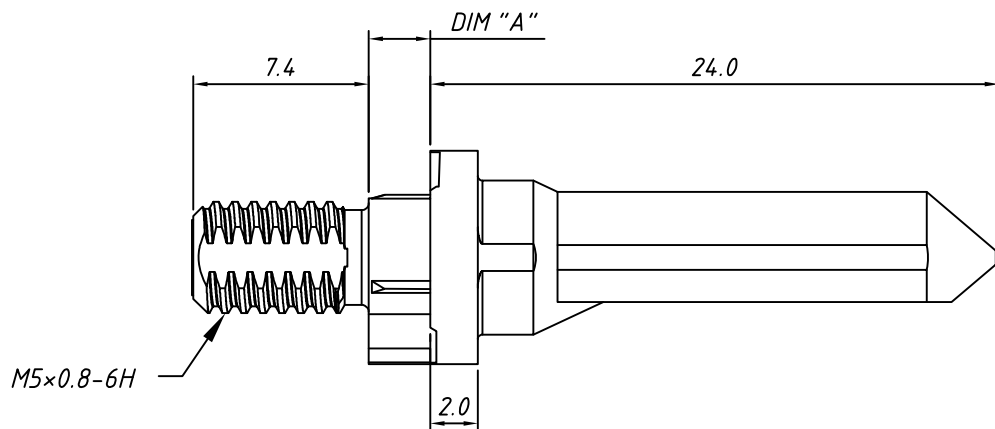


RoHS Compliant

Material: Zinc Alloy,
 Finish:
 3.81 um Min. Silver plated in contact
 area over, 1.27 um Min. Nickel plated all over



L-KLS1-V01-M4	5.70
L-KLS1-V01-M3	4.20
L-KLS1-V01-M2	2.60
P/N	DIM "A"

	PROJECTION	Description:		
		KEY GUIDED PIN VITA46		
GENERAL TOLERANCE	UNITS	mm	KLS P/N:	L-KLS1-V01-Mx
.X ±0.20	Scale	3:1		NingBo KLS ELECTRONIC CO.,LTD.
.XX ±0.10	Draw:	Daniel	2023-1-1	
.XXX ±0.05	Check:	Daniel	2023-1-1	