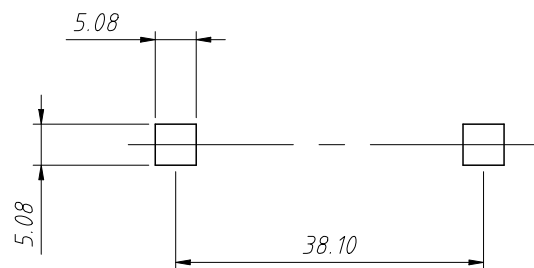
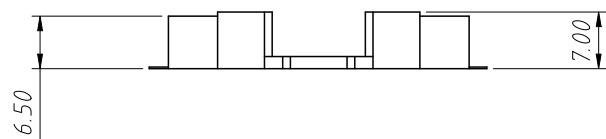
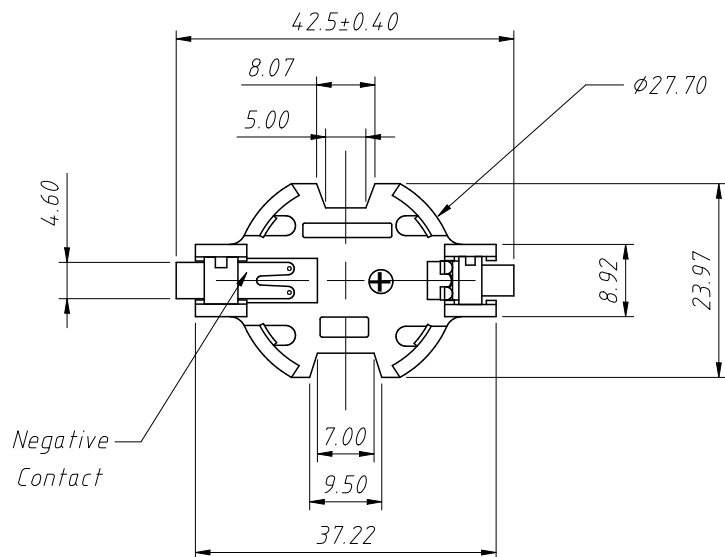


RoHS Compliance



PCB LAYOUT

**SPECIFICATIONS:**

- × Holder material- Zenite 6130, 30% glass reinforced Liquid Crystal Polymer resin, UL File No. E344082
- × Color: Off White
- × Contacts : 0.020" thick PHOS-BRONZE, GOLD FLASH
- × Temperature range: -40°C to +280°C
- × Vibration Test: 10-50-10 Hz swept in 60 seconds  
X,Y,Z direction: 1 hour each direction
- × Result: No dislodgement of the cell or damage  
No discontinuity over 10 ms
- × Shock Test: Half sine wave acceleration 150G. 6 micro-seconds  
3 shock pulses each direction per axis, total of 18 pulses
- × Result: No evidence of physical damage
- × Drop Test: 1 meter
- × Result: No dislodgement of the cell or damage
- × Approximate weight: 2.37g
- × ROHS COMPLIANT

**Order Information:**

L-KLS5-CR2450-05

L: RoHS  
CR2450 Coin  
Battery Holder  
Part Number

ANGLE TOLERANCE	PROJECTION	Description:		
±3°		CR2450 SMD COIN CELL RETAINERS,H7.5mm		
GENERAL TOLERANCE	UNITS	mm	KLS P/N:	L-KLS5-CR2450-05
x.x ±0.30	SHEET SIZE	A4		
x.xx ±0.20	Draw:	Daniel	2022-10-17	NingBo KLS ELECTRONIC CO.,LTD.
x.xxx ±0.10	Check:	Daniel	2022-10-17	