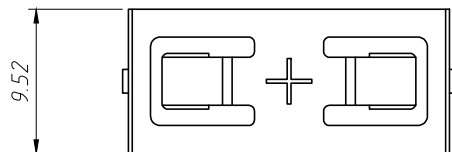
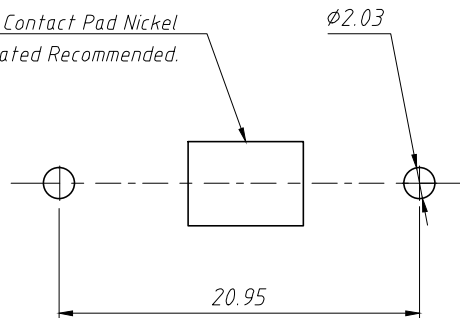


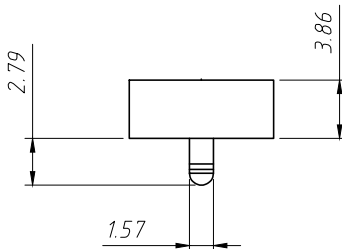
RoHS Compliance



Negative Contact Pad Nickel
Or Gold Plated Recommended.



PCB Layout



Description:

Material: 0.25mm Phosphor Bronze,
Nickel Plated.

Vibration Test: 10-50-10 HZ Sweepled In 60
Secondsx,Y,Z. Direction: 1 Hour Each
Direction.

Result: No Dislodgement Of The Cell Or Damage
No Discontinuity Over 10 Micro-Seconds.

Shock Test: Half Sine Wave Acceleration 150g.
6 Ms 1 Shock Pulses Each Direction
Per Axis.

Result: No Evidence Of Physical Damage.

Drop Test: Mounted On Board And Dropped 1 Time
Per Direction From 1m High To Wooden
Floor.

Result: No Dislodgement Of The Cell, No Damage To
The Holders

ANGLE TOLERANCE	PROJECTION		Description:	
±3°			CR2032 Coin Cell Retainers	
GENERAL TOLERANCE	UNITS	mm	KLS P/N:	L-KLS5-CR2032-32
x.x ±0.30	SHEET SIZE	A4	Draw:	Daniel 2023-02-23
x.xx ±0.20	Check:	Daniel	2023-02-23	NingBo KLS ELECTRONIC CO.,LTD.
x.xxx ±0.10				