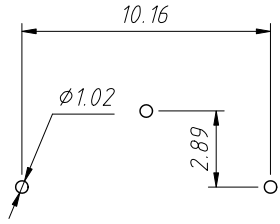
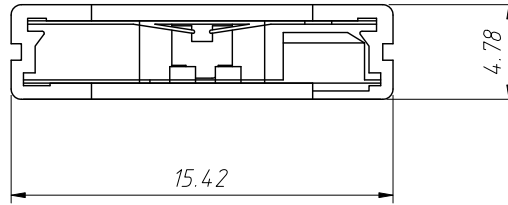


RoHS Compliance



PCB Layout Diagram

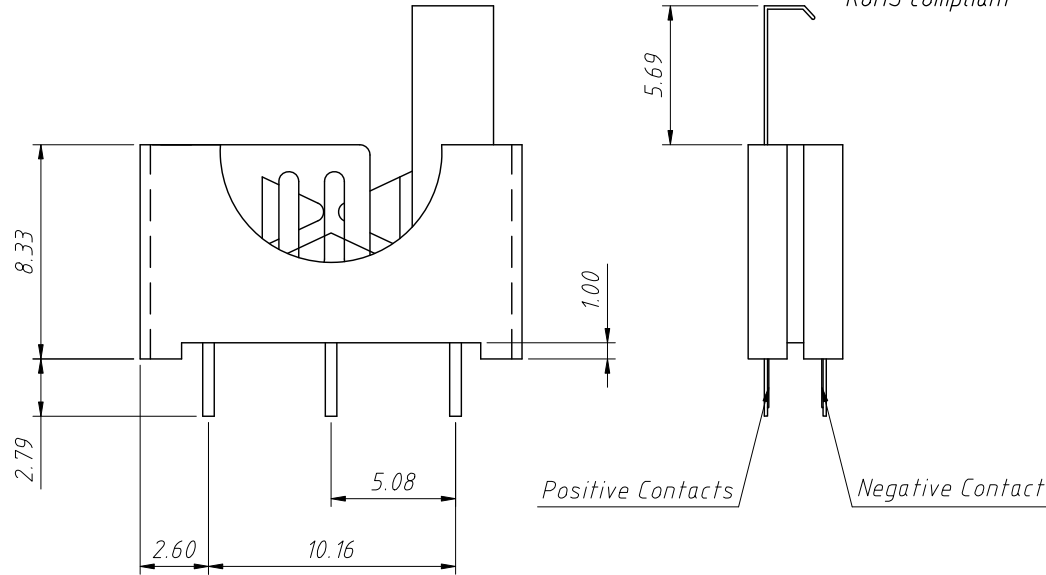
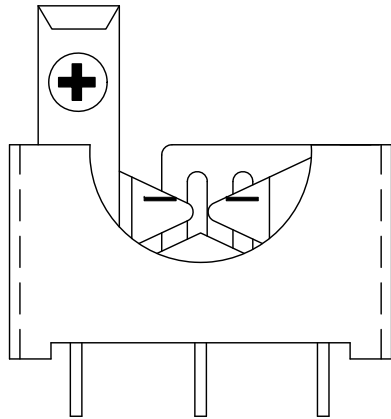


Material:

Housing: Glass filled nylon 66, UL 94 V-0, color black
 Contacts: Phosphor bronze, C5191, nickel plated

Electrical :

Voltage: 250v ac
 Contact resistance: 30m Ω max
 Insulation resistance: 1000m Ω at dc 500v
 Dielectric strength: ac 1000v per minute
 Temperature range: -40 $^{\circ}$ c to +200 $^{\circ}$ c
 Approximate weight: 0.68g
 RoHS compliant



Order Information:

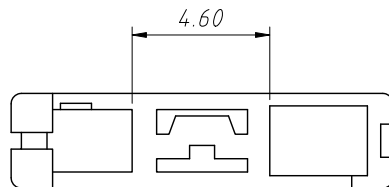
L-KLS5-CR1220-03

L: RoHS

CR1220 Coin

Battery Holder

Part Number



ANGLE TOLERANCE	PROJECTION	Description:	CR1216 CR1220 CR1225 DIP COIN CELL RETAINERS,H3.55mm,Tin plated
$\pm 3^{\circ}$			
GENERAL TOLERANCE	UNITS	mm	KLS P/N: L-KLS5-CR1220-03
x.x ± 0.30	SHEET SIZE	A4	
x.xx ± 0.20	Draw:	Daniel	2022-03-01
x.xxx ± 0.10	Check:	Daniel	2022-03-01



NingBo KLS ELECTRONIC CO.,L TD.