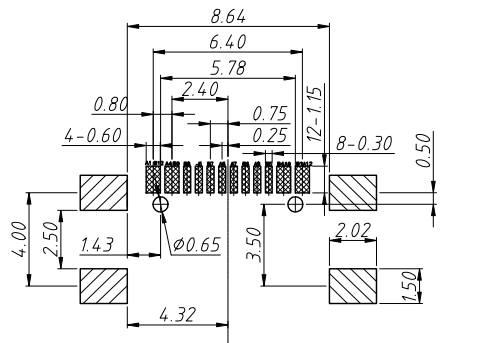
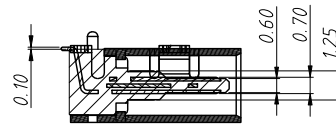
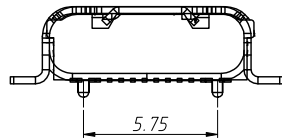
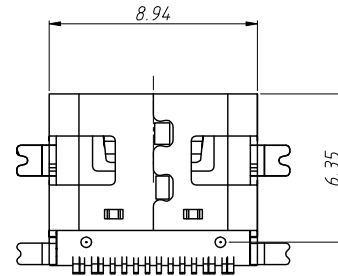
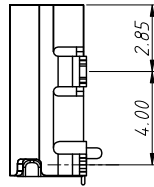
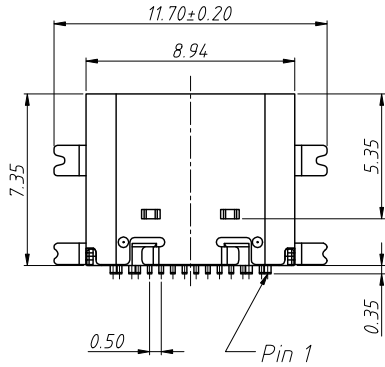
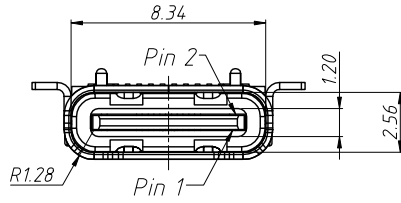


1 RoHS Compliance



Recommended PCB Layout
Tolerance Unspecified±0.05mm

1. Material Specification:

- 1-1.Housing:LCP+30%GF
- 1-2.Terminal:Copper Alloy,C1591R-EH
- 1-3.Shell:Copper Alloy C201 Stainless Steel
- 1-4.Hook:C201 Stainless Steel

2.Plating Specification:

- 2-1.Terminal:Plated Gold in Mating Area;Tin On Solder Talls
Plating around the terminal 50-800u" Min Nickel base
80-120u" Tin,Gilding 3u"
- 2-2.Shell:Stainless steel shell is plated around 80u" min
Nickel Plating

3.Mechanical Performance:

- Insertion Removal Force:
- Cnnector Mate and Unmate Force Mate force:3.57kgf(Max)
- Unmate force:1.02kgf(Min)

4.Electrical Performance:

- 4-1. Voltage Rating:30V DC
- 4-2.Current Rating:1.5A /Contact Terminal
- 4-3.Insulation Resistance:100MΩ Min
- 4-4.Contact Resistance:30mΩ Max
- 4-5.Dielectric Withstand Voltage:500V AC AT Sea Level

USB Type-C Pin Assignments

Pin Number	Signal Name	Pin Number	Signal Name
A1	GND	B12	GND
A4	VBUS	B9	VBUS
A5	CC1	B8	SBU2
A6	DP1	B7	DN2
A7	DN1	B6	DP2
A8	SBU1	B5	CC2
A9	VBUS	B4	VBUS
A12	GND	B1	GND

ANGLE TOLERANCE	PROJECTION	Description:
±3°		16P SMD USB C Type Connector
GENERAL TOLERANCE	UNITS	mm
x.x ±0.30	SHEET SIZE	A4
x.xx ±0.20	Draw:	Daniel 2023-01-10
x.xxx ±0.10	Check:	Daniel 2023-01-10
		KLS NingBo KLS ELECTRONIC CO.,L TD.