

## AV-F6015



**SIZE:**

60x60x15mm

**construction:**

Glass Fiber reinforced plastic;  
Impeller and housing PBT

**OPERATING TEMPERATURE:**

Sleeve bearing -10°C to +70°C

**INSULATION RESISTANCE:**

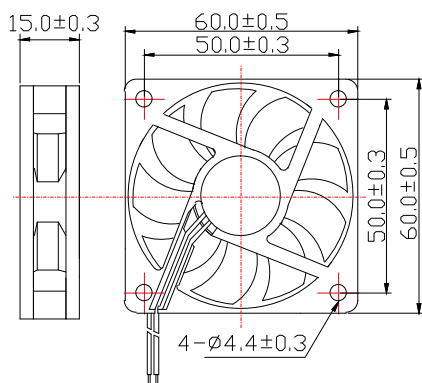
10meg Ohm min, at 500 VDC  
(between frame and terminal)

**DIELECTRIC STRENGTH:**

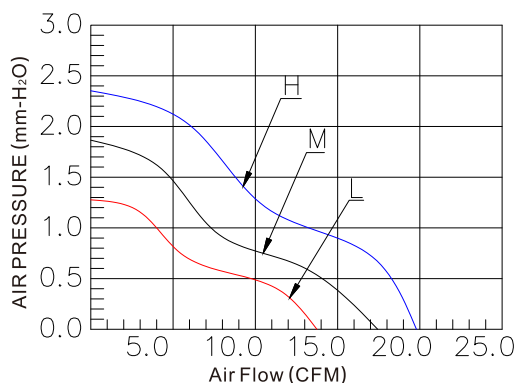
5mA max, at 500 VAC 60Hz one minute  
(between frame and terminal)

### Dimensions Drawing

Unit:mm



### Characteristic Curves



### Specifications

Carton Specifications (Unit: cm):40x32x32 QTY:600pcs GW:21.75Kg

Model	Bearing Type	Rated Voltage	Operation Voltage	Current	Speed	Air Flow	Static Pressure	Noise Level	Weight
		VDC	VDC	A	RPM	CFM	mmH <sub>2</sub> O	dBA	g
AV-F6015HS05	Sleeve	5	4.5~5.5	0.26	4000	19.83	2.35	34.63	35.6
AV-F6015MS05	Sleeve	5	4.5~5.5	0.20	3500	17.58	1.85	30.69	35.6
AV-F6015LS05	Sleeve	5	4.5~5.5	0.14	3000	14.67	1.27	28.54	35.6
AV-F6015HB05	Ball	5	4.5~5.5	0.26	4000	19.83	2.35	34.63	35.6
AV-F6015MB05	Ball	5	4.5~5.5	0.20	3500	17.58	1.85	30.69	35.6
AV-F6015LB05	Ball	5	4.5~5.5	0.14	3000	14.67	1.27	28.54	35.6
AV-F6015HS	Sleeve	12	10.8~13.2	0.15	4000	19.83	2.35	34.63	35.6
AV-F6015MS	Sleeve	12	10.8~13.2	0.13	3500	17.58	1.85	30.69	35.6
AV-F6015LS	Sleeve	12	10.8~13.2	0.11	3000	14.67	1.27	28.54	35.6
AV-F6015HB	Ball	12	10.8~13.2	0.15	4000	19.83	2.35	34.63	35.6
AV-F6015MB	Ball	12	10.8~13.2	0.13	3500	17.58	1.85	30.69	35.6
AV-F6015LB	Ball	12	10.8~13.2	0.11	3000	14.67	1.27	28.54	35.6