

AV-F3010



SIZE:

30x30x10mm

construction:

Glass Fiber reinforced plastic;
Impeller and housing PBT

OPERATING TEMPERATURE:

Sleeve bearing -10°C to +70°C

INSULATION RESISTANCE:

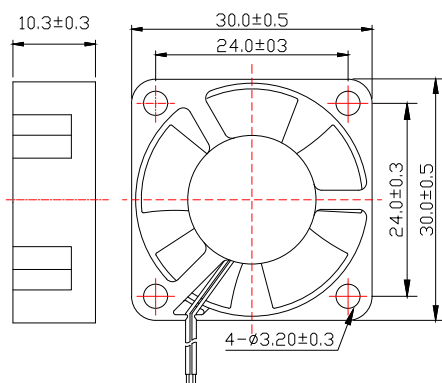
10meg Ohm min, at 500 VDC
(between frame and terminal)

DIELECTRIC STRENGTH:

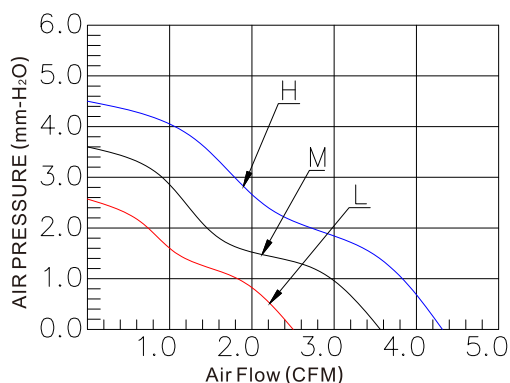
5mA max, at 500 VAC 60Hz one minute
(between frame and terminal)

Dimensions Drawing

Unit:mm



Characteristic Curves



Specifications

Carton Specifications (Unit: cm):45x27x18 QTY:1000pcs GW:8.85Kg

Model	Bearing Type	Rated Voltage	Operation Voltage	Current	Speed	Air Flow	Static Pressure	Noise Level	Weight
		VDC	VDC	A	RPM	CFM	mmH ₂ O	dBA	g
AV-F3010HS05	Sleeve	5	4.5~5.5	0.20	9500	4.23	4.47	28.46	8.5
AV-F3010MS05	Sleeve	5	4.5~5.5	0.16	8000	3.56	3.76	23.23	8.5
AV-F3010LS05	Sleeve	5	4.5~5.5	0.14	5500	2.45	2.59	20.26	8.5
AV-F3010HB05	Ball	5	4.5~5.5	0.20	9500	4.23	4.47	28.46	8.5
AV-F3010MB05	Ball	5	4.5~5.5	0.16	8000	3.56	3.76	23.23	8.5
AV-F3010LB05	Ball	5	4.5~5.5	0.14	5500	2.45	2.59	20.26	8.5
AV-F3010HS	Sleeve	12	10.8~13.2	0.12	9500	4.23	4.47	28.46	8.5
AV-F3010MS	Sleeve	12	10.8~13.2	0.09	8000	3.56	3.76	23.23	8.5
AV-F3010LS	Sleeve	12	10.8~13.2	0.06	5500	2.45	2.59	20.26	8.5
AV-F3010HB	Ball	12	10.8~13.2	0.12	9500	4.23	4.47	28.46	8.5
AV-F3010MB	Ball	12	10.8~13.2	0.09	8000	3.56	3.76	23.23	8.5
AV-F3010LB	Ball	12	10.8~13.2	0.06	5500	2.45	2.59	20.26	8.5