

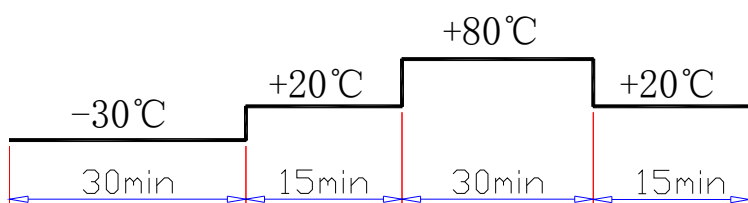
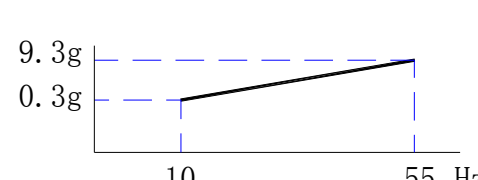
1. Externally driven magnetic buzzers Electrical Specification:

PART NO:L-KLS3-MT-09*5.5

Item	Unit	Specifications	
1-1	Rated Voltage (Square Wave)	V	3
1-2	Operating Voltage	V	4-6
1-3	* Rated Current (Max)	mA	80
1-4	* Min Sound Output at 10cm	dB	82
1-5	* Resonant Frequency	Hz	2731
1-6	Coil Resistance	Ω	40 ± 4
1-7	Operating Temperature	$^{\circ}\text{C}$	-40~+85
1-8	Storage Temperature	$^{\circ}\text{C}$	-40~+105
1-9	Weight	g	1.0
1-10	Housing Material	PPO	
1-11	Lead Pin Material	Red Copper (DSn)	

* Value Applying at Rated Voltage (resonant frequency, 1/2 duty, square wave)

2. ENVIRONMENTAL TEST

Item	Specifications
2-1	Storage in High temp. Storage in $+85^{\circ}\text{C} \pm 2^{\circ}\text{C}$ test box for 96 hours, then expose to the room temperature for 2 hours without applying power.
2-2	Storage in Low temp. Storage in $-40^{\circ}\text{C} \pm 2^{\circ}\text{C}$ test box for 96 hours, then expose to the room temperature for 2 hours without applying power.
2-3	Storage in Humidity Storage in $+40^{\circ}\text{C} \pm 2^{\circ}\text{C}$ 90-95%RH test box for 96 hours, then expose to the room temperature for 2 hours without applying power.
2-4	Thermal cycle test.  Make this test for 5 cycles without applying power, then expose to the room temperature for 2 hours.
2-5	Vibration test  Amplitude: 1.5mm Time: 1min/axis Make this test for the directions of X, Y, Z for 2 hours each (total 6 hours).
2-6	Drop test Free drop a unit from the height 100cm to the surface of 10mm thick board, three directions (X, Y, Z).
2-7	Solderability test Soldering temp.: $260 \pm 5^{\circ}\text{C}$ Heat applying time: $3 \pm 0.5\text{sec}$.

PASS CRITERION :

After these tests, the change of S.P.L shall be within $\pm 5\text{ dB}$.



NingBo KLS ELECTRONIC CO., LTD.

3.MEASURING METHOD(BUZZER MODE)

3-1 .Test Condition

3-1-1.STANDARD

Temperature : $25 \pm 3^{\circ}\text{C}$

Relative humidity : 60% ~ 70%,

Atmospheric pressure : 860mbar to 1060mbar

3-1-2.JUDGEMENT

Temperature : 15 ~ 35°C

Relative humidity : 45% ~ 85%,

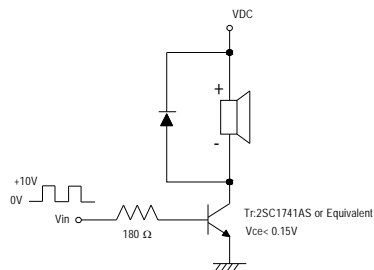
Atmospheric pressure : 860mbar to 1060mbar.

3-2 . Standard Test Fixture

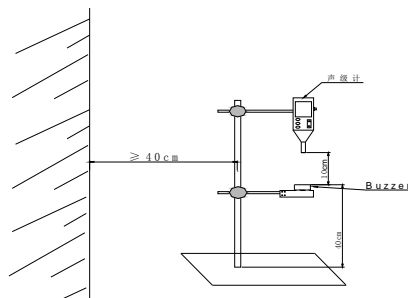
1.rated Voltage(Square wave):5V

2.Resonant Frequency:2731Hz

3.Standard Drive Circuit:

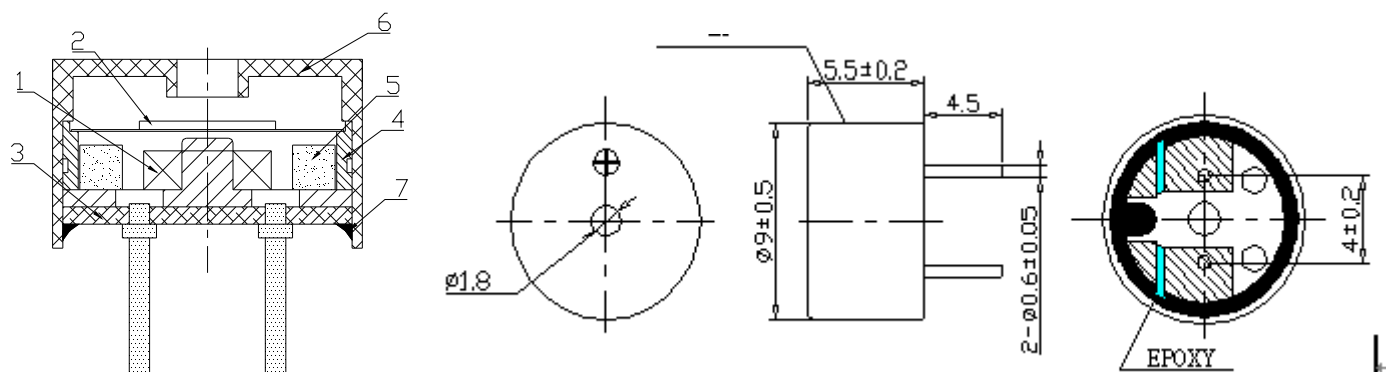


4. Standard test fixture:



4.DIMENSIONS

Unless otherwise specified, tolerance: ± 0.5 (unit:mm)



Cadmium(Cd)/Cadmium Compounds	≤ 100 ppm
Lead (Pb) / Lead Compounds	≤ 800 ppm
Mercury (Hg) Mercury Compounds	≤ 800 ppm
Hexavalent-Chromium (Cr6+) Compounds	≤ 800 ppm
PBB	≤ 800 ppm
PBDE	≤ 800 ppm

- 1) All parts must be meet to ROHS.
- 2) Wave solder allowed and wash not allowed.

Part No.	Part Name	Q'TY	Material	Remark
7	Potting		Epoxy	
6	Housing	1	PPO	
5	Core	1	Ferrite	
4	Brass ring	1	Copper	
3	PCB	1	Epoxy	
2	Diaphragm	1	Iron	
1	Coil Part	1	Copper And Iron	

5.PACKING

