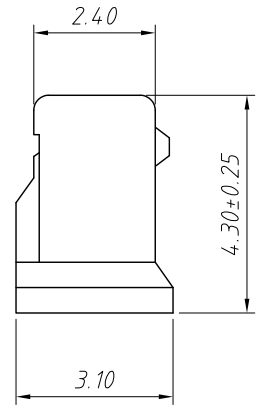
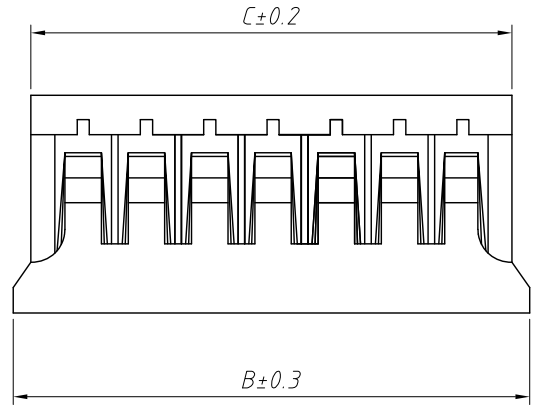
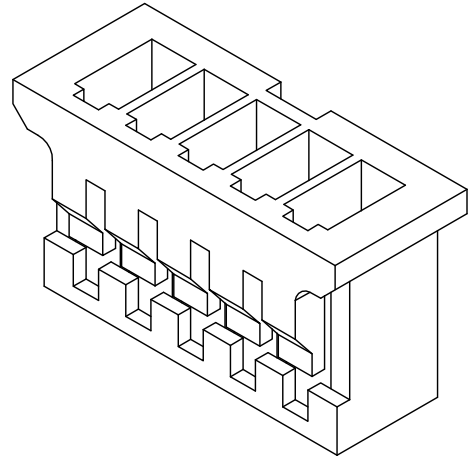
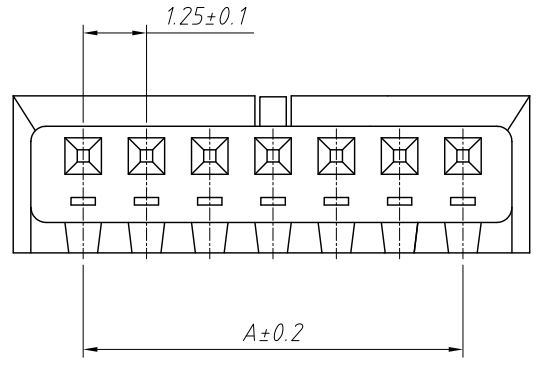


1
RoHS Compliance



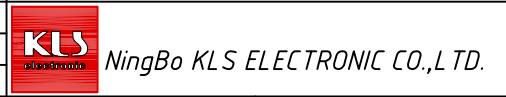
Pin	Dimensions(mm)		
	A	B	C
02	1.25	3.95	3.25
03	2.50	5.20	4.50
04	3.75	6.45	5.75
05	5.00	7.70	7.00
06	15.70	8.95	8.25
07	6.25	10.20	9.50
08	7.50	11.45	10.75
09	8.75	12.70	12.00
10	10.00	13.95	13.25
11	11.25	15.20	14.50
12	13.75	16.45	15.75
13	15.00	17.70	17.00
14	16.25	18.95	18.25
15	17.50	20.20	19.50



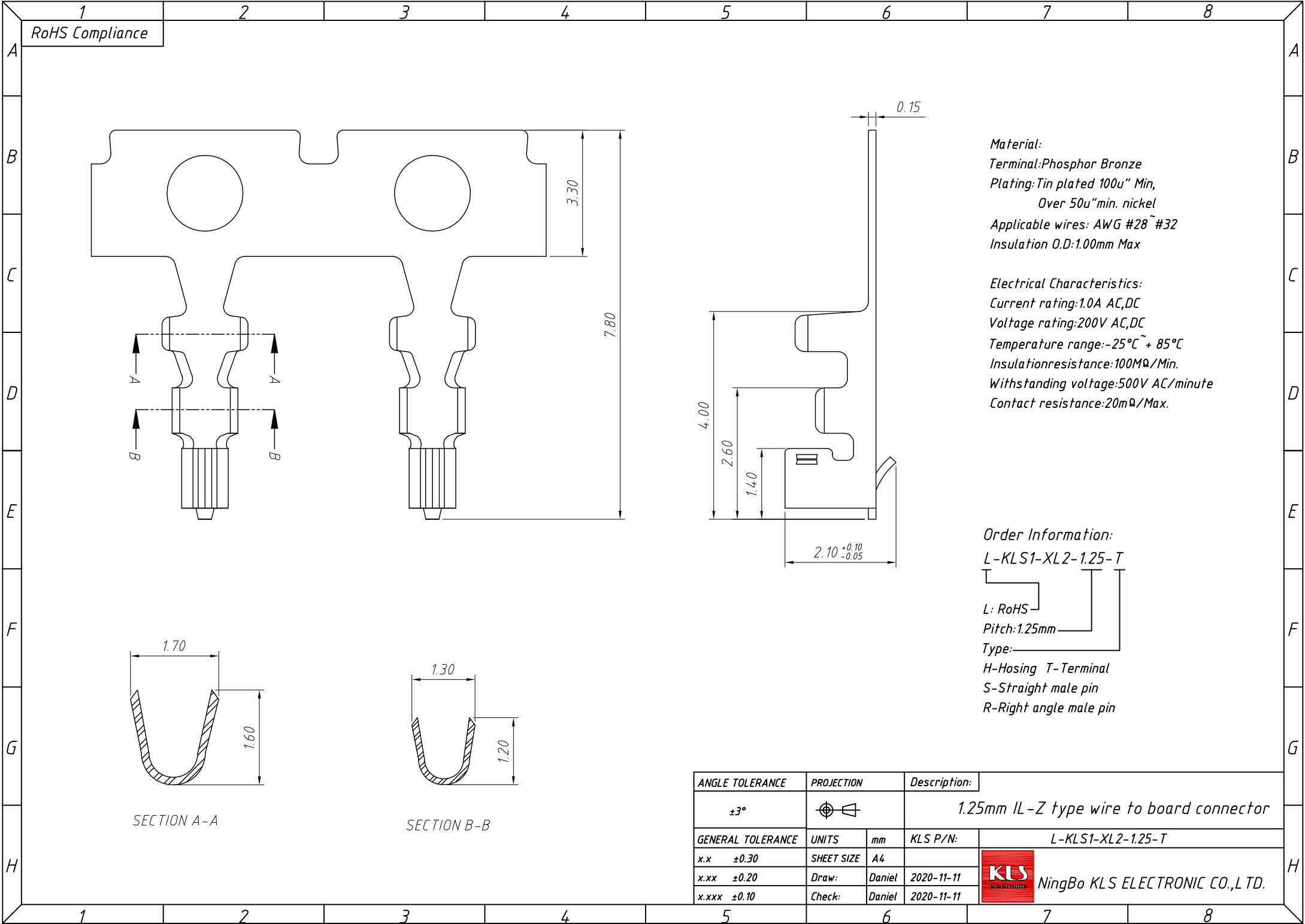
Order Information:
 L-KLS1-XL2-1.25-XX-H
 L: RoHS
 Pitch: 1.25mm
 XX-No. of 02~15 pins
 Type: _____
 H-Hosing T-Terminal
 S-Straight male pin
 R-Right angle male pin

Material:
 Housing: PA66, UL94V-0
 Electrical Characteristics:
 Current rating: 1.0A AC, DC
 Voltage rating: 200V AC, DC
 Temperature range: -25°C ~ +85°C
 Insulation resistance: 100MΩ/Min.
 Withstanding voltage: 500V AC/minute
 Contact resistance: 20mΩ/Max.

ANGLE TOLERANCE	PROJECTION	Description:	
±3°		1.25mm IL-Z type wire to board connector	
GENERAL TOLERANCE	UNITS	mm	KLS P/N:
x.x ±0.30	SHEET SIZE	A4	L-KLS1-XL2-1.25-XX-H
x.xx ±0.20	Draw:	Daniel	2020-11-11
x.xxx ±0.10	Check:	Daniel	2020-11-11



1
RoHS Compliance



Material:
Terminal: Phosphor Bronze
Plating: Tin plated 100u" Min,
Over 50u" min. nickel
Applicable wires: AWG #28 ~ #32
Insulation O.D: 1.00mm Max

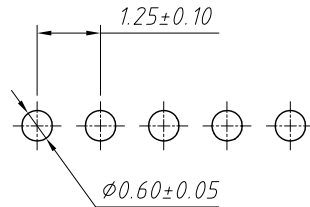
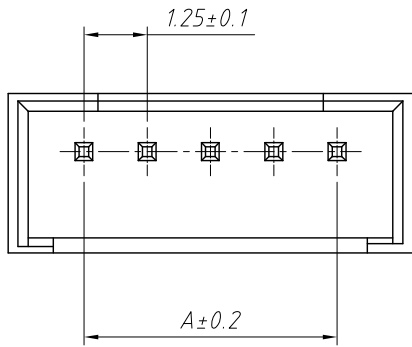
Electrical Characteristics:
Current rating: 1.0A AC, DC
Voltage rating: 200V AC, DC
Temperature range: -25°C ~ +85°C
Insulation resistance: 100MΩ/Min.
Withstanding voltage: 500V AC/minute
Contact resistance: 20mΩ/Max.

Order Information:
L-KLS1-XL2-1.25-T

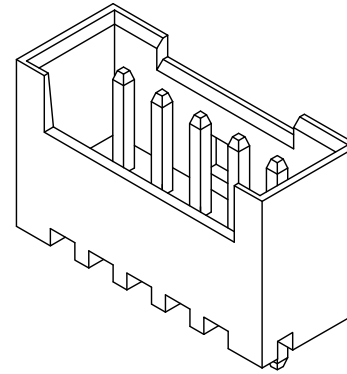
L: RoHS
Pitch: 1.25mm
Type: _____
H-Hosing T-Terminal
S-Straight male pin
R-Right angle male pin

ANGLE TOLERANCE	PROJECTION	Description:
±3°		1.25mm IL-Z type wire to board connector
GENERAL TOLERANCE	UNITS	mm
x.x ±0.30	SHEET SIZE	A4
x.xx ±0.20	Draw:	Daniel 2020-11-11
x.xxx ±0.10	Check:	Daniel 2020-11-11
		NingBo KLS ELECTRONIC CO.,L TD.

1
RoHS Compliance

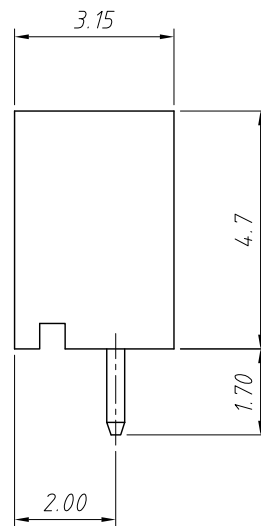
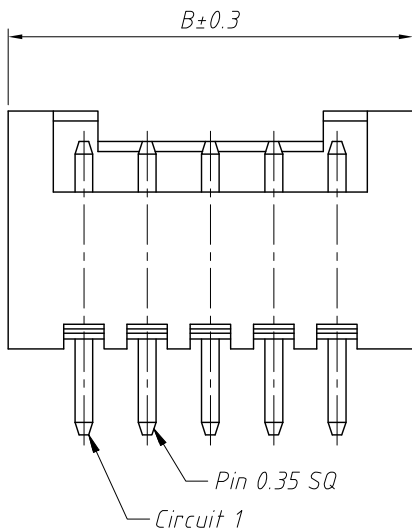


Recommended P.C.B Layout



Material:
Housing: PA66 ,UL94V-0
Contact :Brass
Plating :Tin plated

Electrical Characteristics:
Current rating:1.0A AC,DC
Voltage rating:200V AC,DC
Temperature range:-25°C ~ + 85°C
Insulation resistance:100MΩ/Min.
Withstanding voltage:500V AC/minute
Contact resistance:20mΩ/Max.



Pin	Dimensions(mm)	
	A	C
02	1.25	4.25
03	2.50	5.50
04	3.75	6.75
05	5.00	8.00
06	15.70	9.25
07	6.25	10.50
08	7.50	11.75
09	8.75	13.00
10	10.00	14.25
11	11.25	15.50
12	13.75	16.75
13	15.00	18.00
14	16.25	19.25
15	17.50	20.50

Order Information:

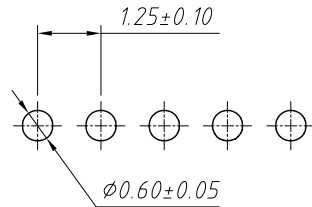
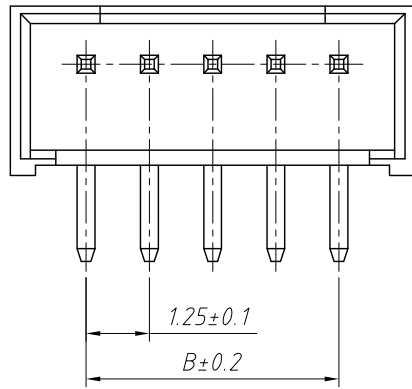
L-KLS1-XL2-1.25-XX-S

L: RoHS
Pitch:1.25mm
XX-No. of 02 ~ 15 pins
Type: _____
H-Hosing T-Terminal
S-Straight male pin
R-Right angle male pin

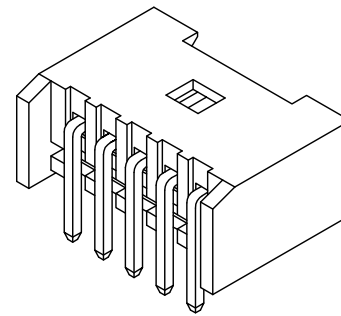
ANGLE TOLERANCE	PROJECTION	Description:		
±3°		1.25mm IL-Z type wire to board connector		
GENERAL TOLERANCE	UNITS	mm	KLS P/N:	L-KLS1-XL2-1.25-XX-S
x.x ±0.30	SHEET SIZE	A4		
x.xx ±0.20	Draw:	Daniel	2020-11-11	
x.xxx ±0.10	Check:	Daniel	2020-11-11	

NingBo KLS ELECTRONIC CO.,L TD.

1
RoHS Compliance

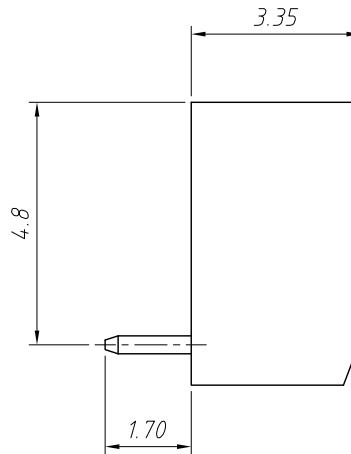
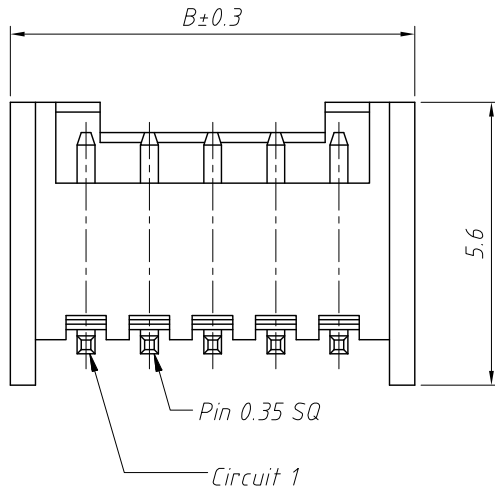


Recommended P.C.B Layout



Material:
Housing: PA66 ,UL 94V-0
Contact :Brass
Plating :Tin plated

Electrical Characteristics:
Current rating:1.0A AC,DC
Voltage rating:200V AC,DC
Temperature range:-25°C ~ + 85°C
Insulation resistance:100MΩ/Min.
Withstanding voltage:500V AC/minute
Contact resistance:20mΩ/Max.



Pin	Dimensions(mm)	
	A	C
02	1.25	4.25
03	2.50	5.50
04	3.75	6.75
05	5.00	8.00
06	15.70	9.25
07	6.25	10.50
08	7.50	11.75
09	8.75	13.00
10	10.00	14.25
11	11.25	15.50
12	13.75	16.75
13	15.00	18.00
14	16.25	19.25
15	17.50	20.50

Order Information:
L-KLS1-XL2-1.25-XX-R

L: RoHS
Pitch:1.25mm
XX-No. of 02 ~ 15 pins
Type:
H-Hosing T-Terminal
S-Straight male pin
R-Right angle male pin

ANGLE TOLERANCE	PROJECTION	Description:
±3°		1.25mm IL-Z type wire to board connector
GENERAL TOLERANCE	UNITS	mm
x.x ±0.30	SHEET SIZE	A4
x.xx ±0.20	Draw:	Daniel 2020-11-11
x.xxx ±0.10	Check:	Daniel 2020-11-11

NingBo KLS ELECTRONIC CO.,L TD.