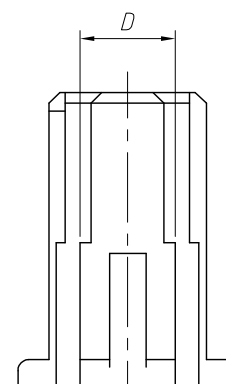
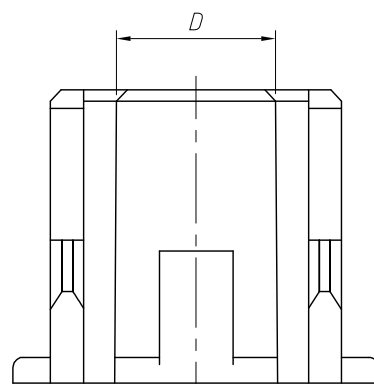
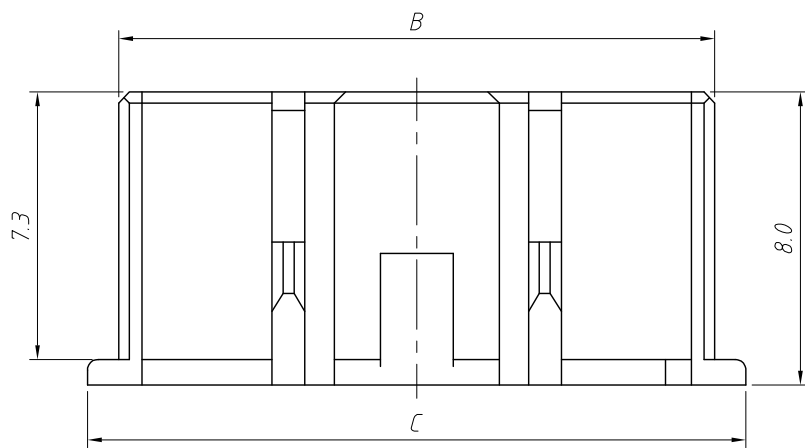
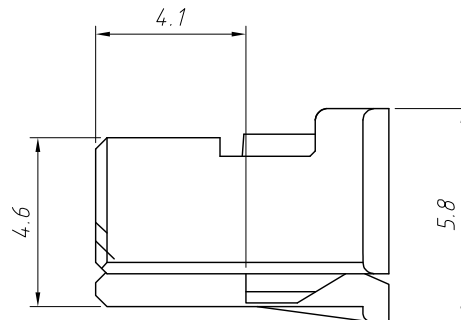
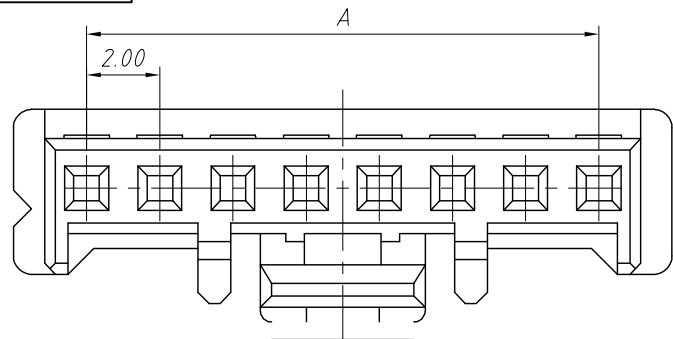


1 RoHS Compliance

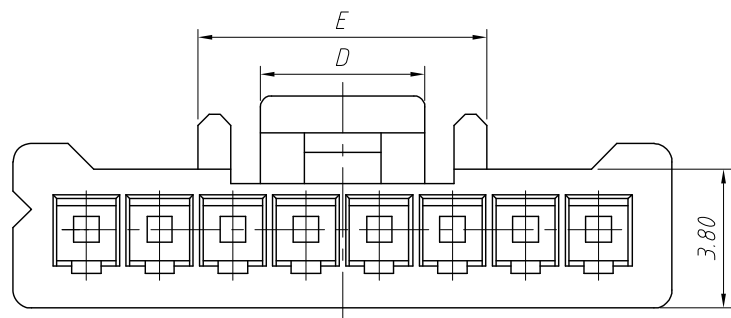
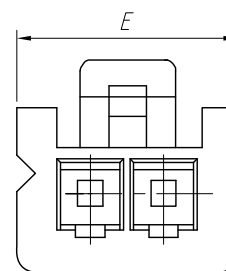
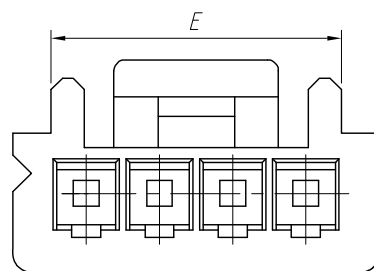


Pin	Dimensions(mm)				
	A	B	C	D	E
02	2.00	4.30	6.00	2.60	4.40
03	4.00	6.30	8.00	3.80	6.40
04	6.00	8.30	10.00	10.00	8.40
05	8.00	10.30	12.00	12.00	7.90
06	10.00	12.30	14.00	14.00	7.90
07	12.00	14.30	16.00	16.00	7.90
08	14.00	16.30	18.00	18.00	7.90
09	16.00	18.30	20.00	20.00	7.90
10	18.00	20.30	22.00	22.00	14.50
11	20.00	22.30	24.00	24.00	14.50
12	22.00	24.30	26.00	26.00	14.50
13	24.00	26.30	28.00	28.00	14.50
14	26.00	28.30	30.00	30.00	14.50
15	28.00	30.30	32.00	32.00	14.50

05-15 Pin

03-04 Pin

02 Pin



Material:

Housing:PA66,UL 94V-0

Electrical Characteristics:

Rated Current:3.0AMP

Voltage rating:250V AC,DC

Temperature range:-40°C ~ + 105°C

Insulator Resistance:1000MΩ Min

Withstand Voltage:800V AC/DC

Contact Resistance:10mΩ Max

Order Information:

L-KLS1-HX200-XX-H

L: RoHS

Pitch:2.00mm

XX-No.of 02~15 pins

Type:

T-Terminal H-Hosing

S-Straight male pin

R-Right angle male pin

VM-Vertical SMT Pin

RM-Horizontal SMT Pin

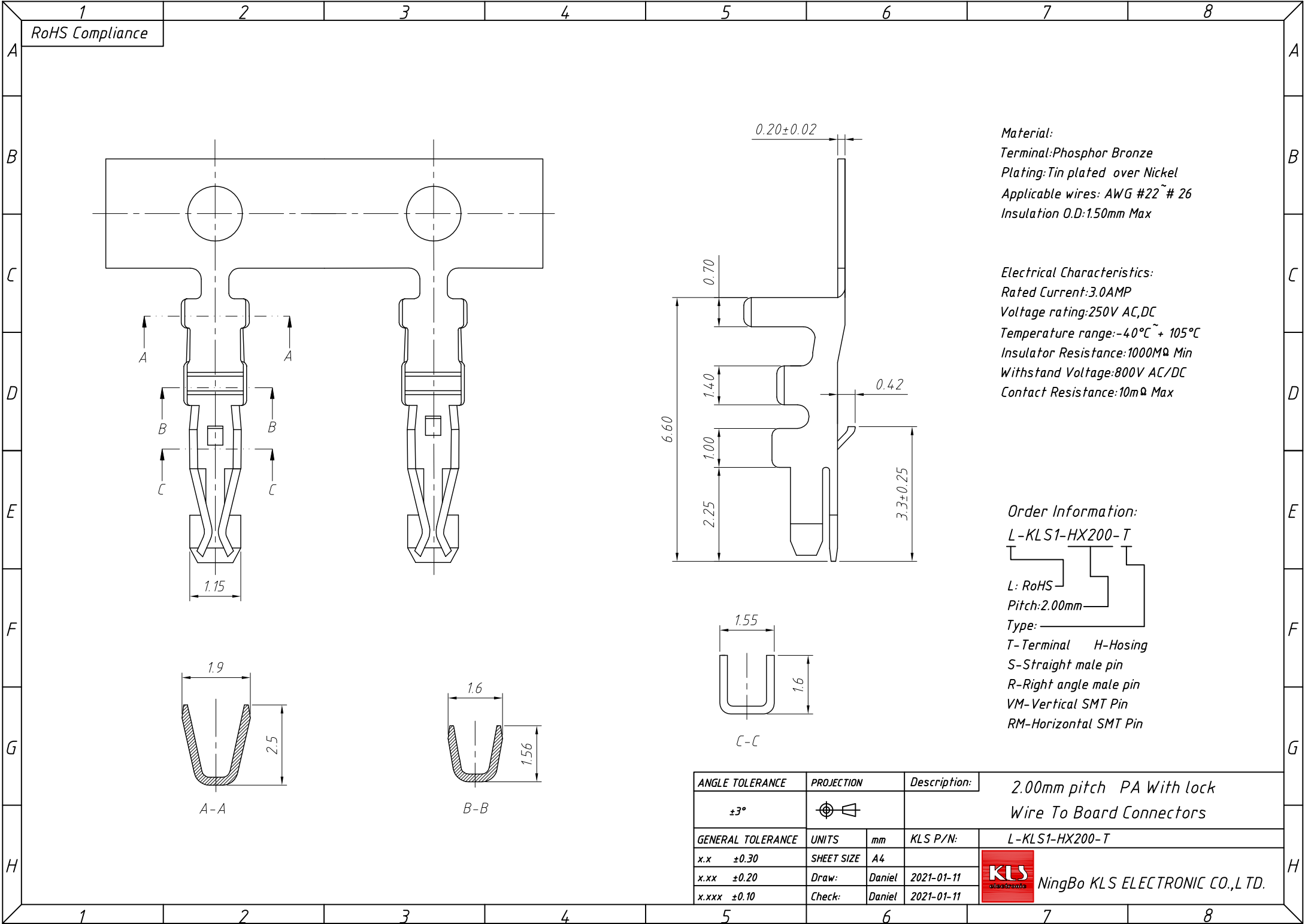
ANGLE TOLERANCE	PROJECTION	Description:
±3°		2.00mm pitch PA With lock Wire To Board Connectors

GENERAL TOLERANCE	UNITS	mm	KLS P/N:
x.x ±0.30	SHEET SIZE	A4	L-KLS1-HX200-XX-H
x.xx ±0.20	Draw:	Daniel	2021-01-11
x.xxx ±0.10	Check:	Daniel	2021-01-11



NingBo KLS ELECTRONIC CO.,L.TD.

1
RoHS Compliance



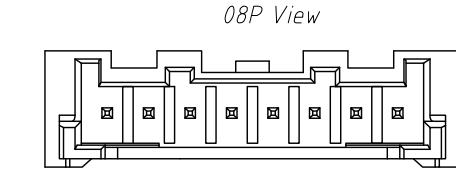
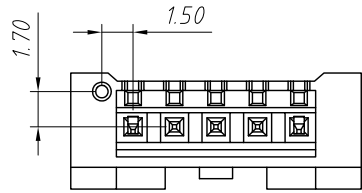
Material:
 Terminal: Phosphor Bronze
 Plating: Tin plated over Nickel
 Applicable wires: AWG #22 ~ # 26
 Insulation O.D.: 1.50mm Max

Electrical Characteristics:
 Rated Current: 3.0AMP
 Voltage rating: 250V AC, DC
 Temperature range: -40°C ~ + 105°C
 Insulator Resistance: 1000MΩ Min
 Withstand Voltage: 800V AC/DC
 Contact Resistance: 10mΩ Max

Order Information:
 L-KLS1-HX200-T
 L: RoHS
 Pitch: 2.00mm
 Type:
 T-Terminal H-Hosing
 S-Straight male pin
 R-Right angle male pin
 VM-Vertical SMT Pin
 RM-Horizontal SMT Pin

ANGLE TOLERANCE	PROJECTION	Description:	2.00mm pitch PA With lock Wire To Board Connectors
±3°			
GENERAL TOLERANCE	UNITS	mm	KLS P/N: L-KLS1-HX200-T
x.x ±0.30	SHEET SIZE	A4	NingBo KLS ELECTRONIC CO.,L TD.
x.xx ±0.20	Draw:	Daniel 2021-01-11	
x.xxx ±0.10	Check:	Daniel 2021-01-11	

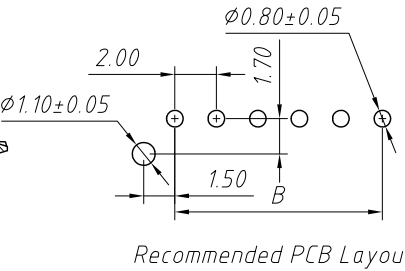
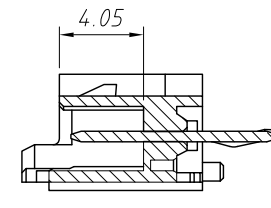
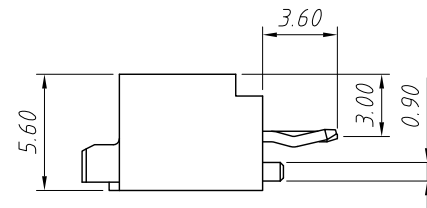
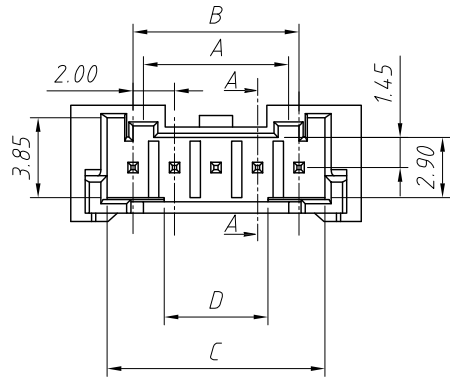
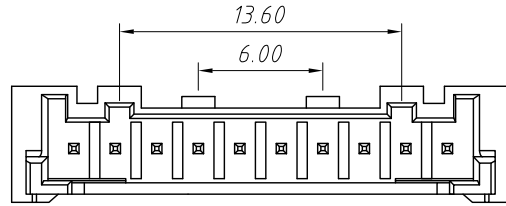
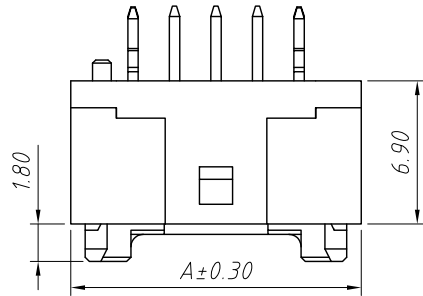
1 RoHS Compliance



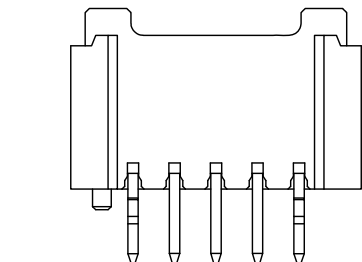
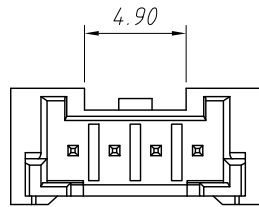
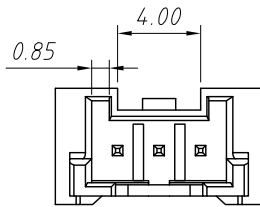
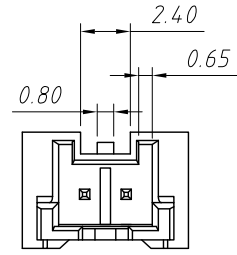
Material:
Housing:PA9T,UL 94 V-0
Contact:Brass
Plating: Tin Plated over Nickel

Electrical Characteristics:
Rated Current:3.0AMP
Voltage rating:250V AC,DC
Temperature range:-40°C ~ + 105°C
Insulator Resistance:1000MΩ Min
Withstand Voltage:800V AC/DC
Contact Resistance:10mΩ Max

Pin	Dimensions(mm)				
	A	B	C	D	E
02	8.00	2.00	4.50	---	---
03	10.00	4.00	6.50	1.00	---
04	12.00	6.00	8.50	5.00	---
05	14.00	8.00	10.50	5.00	7.00
06	16.00	10.00	12.50	5.00	7.00
07	18.00	12.00	14.50	7.00	7.00
08	20.00	14.00	16.50	9.00	7.00
09	22.00	16.00	18.50	11.00	7.00
10	24.00	18.00	20.50	13.00	13.60
11	26.00	20.00	22.50	15.00	13.60
12	28.00	22.00	24.50	17.00	13.60
13	30.00	24.00	26.50	19.00	13.60
14	32.00	26.00	28.50	21.00	13.60
15	34.00	28.00	30.50	23.00	13.60
16	36.00	30.00	32.50	25.00	13.60

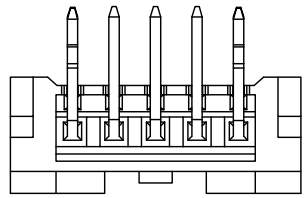


Order Information:
L-KLS1-HX200-XX-S
L: RoHS
Pitch:2.00mm
XX-No.of 02~16 pins
Type:
T-Terminal H-Hosing
S-Straight male pin
R-Right angle male pin
VM-Vertical SMT Pin
RM-Horizontal SMT Pin

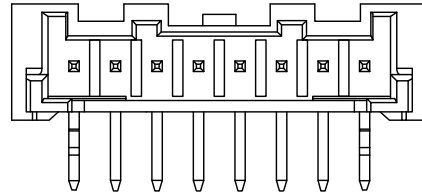


ANGLE TOLERANCE	PROJECTION	Description:	2.00mm pitch PA With lock Wire To Board Connectors
±3°			
GENERAL TOLERANCE	UNITS	mm	KLS P/N: L-KLS1-HX200-XX-S
x.x ±0.30	SHEET SIZE	A4	NingBo KLS ELECTRONIC CO.,L TD.
x.xx ±0.20	Draw:	Daniel 2021-01-11	
x.xxx ±0.10	Check:	Daniel 2021-01-11	

1 RoHS Compliance



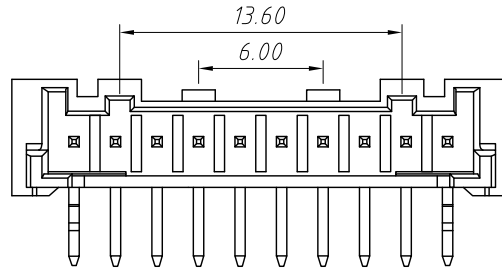
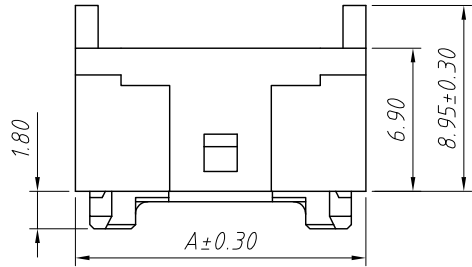
08P View



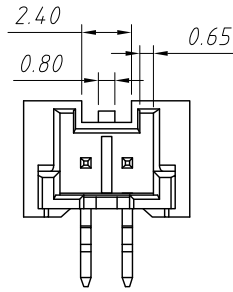
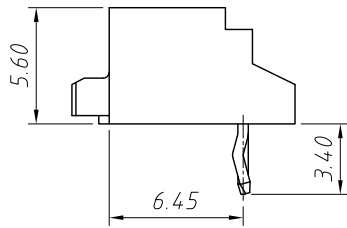
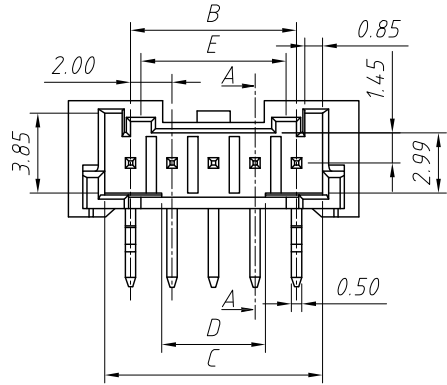
Material:
 Housing: PA9T, UL94 V-0
 Contact: Brass
 Plating: Tin Plated over Nickel

Electrical Characteristics:
 Rated Current: 3.0AMP
 Voltage rating: 250V AC, DC
 Temperature range: -40°C ~ +105°C
 Insulator Resistance: 1000MΩ Min
 Withstand Voltage: 800V AC/DC
 Contact Resistance: 10mΩ Max

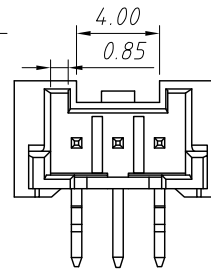
Pin	Dimensions(mm)				
	A	B	C	D	E
02	8.00	2.00	4.50	---	---
03	10.00	4.00	6.50	1.00	---
04	12.00	6.00	8.50	5.00	---
05	14.00	8.00	10.50	5.00	7.00
06	16.00	10.00	12.50	5.00	7.00
07	18.00	12.00	14.50	7.00	7.00
08	20.00	14.00	16.50	9.00	7.00
09	22.00	16.00	18.50	11.00	7.00
10	24.00	18.00	20.50	13.00	13.60
11	26.00	20.00	22.50	15.00	13.60
12	28.00	22.00	24.50	17.00	13.60
13	30.00	24.00	26.50	19.00	13.60
14	32.00	26.00	28.50	21.00	13.60
15	34.00	28.00	30.50	23.00	13.60



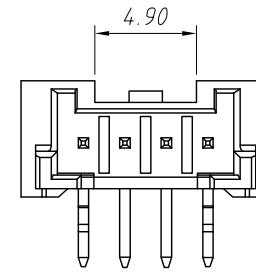
09P-16P View



02P View



03P View

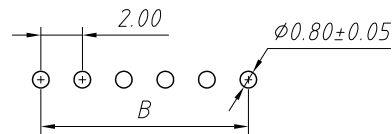
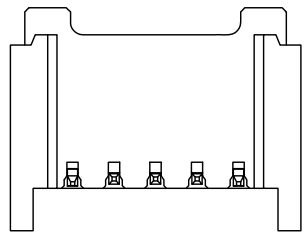


04P View

Order Information:
 L-KLS1-HX200-XX-R

L: RoHS
 Pitch: 2.00mm
 XX-No. of 02~15 pins
 Type:

T-Terminal H-Hosing
 S-Straight male pin
 R-Right angle male pin
 VM-Vertical SMT Pin
 RM-Horizontal SMT Pin



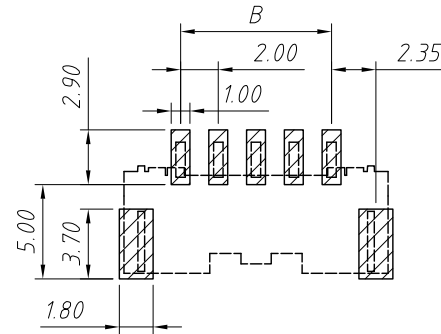
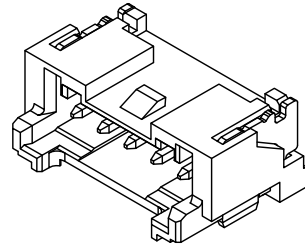
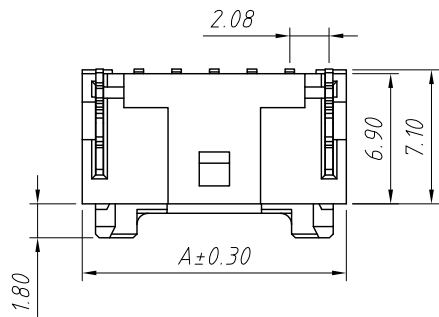
Recommended PCB Layout

ANGLE TOLERANCE	PROJECTION	Description:
±3°		2.00mm pitch PA With lock Wire To Board Connectors
GENERAL TOLERANCE	UNITS	mm
x.x ±0.30	SHEET SIZE	A4
x.xx ±0.20	Draw:	Daniel 2021-01-11
x.xxx ±0.10	Check:	Daniel 2021-01-11



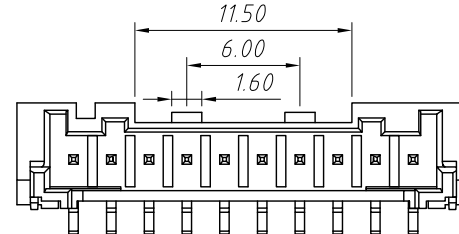
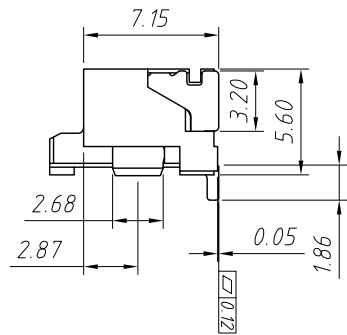
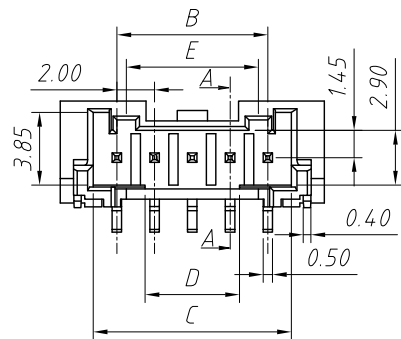
NingBo KLS ELECTRONIC CO.,L TD.

RoHS Compliance

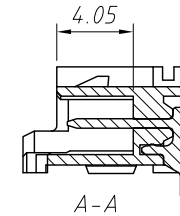


Recommended PCB Layout
Total tolerance: ±0.05mm

Pin	Dimensions(mm)				
	A	B	C	D	E
02	8.00	2.00	4.50	---	---
03	10.00	4.00	6.50	1.00	---
04	12.00	6.00	8.50	5.00	---
05	14.00	8.00	10.50	5.00	7.00
06	16.00	10.00	12.50	5.00	7.00
07	18.00	12.00	14.50	7.00	7.00
08	20.00	14.00	16.50	9.00	7.00
09	22.00	16.00	18.50	11.00	7.00
10	24.00	18.00	20.50	13.00	13.60
11	26.00	20.00	22.50	15.00	13.60
12	28.00	22.00	24.50	17.00	13.60
13	30.00	24.00	26.50	19.00	13.60
14	32.00	26.00	28.50	21.00	13.60
15	34.00	28.00	30.50	23.00	13.60



10-15P Two Clasp View



A-A

Order Information:

L-KLS1-HX200-XX-VM

L: RoHS

Pitch: 2.00mm

XX-No. of 02 ~ 15 pins

Type:

T-Terminal H-Hosing

S-Straight male pin

R-Right angle male pin

VM-Vertical SMT Pin

RM-Horizontal SMT Pin

Material:

Housing: PA9T, UL 94V-0

Contact: Brass, Tin Plated over Nickel

Electrical Characteristics:

Rated Current: 3.0AMP

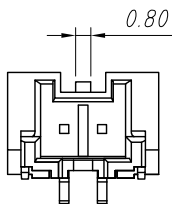
Voltage rating: 250V AC, DC

Temperature range: -40°C ~ +105°C

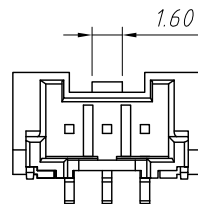
Insulator Resistance: 1000MΩ Min

Withstand Voltage: 800V AC/DC

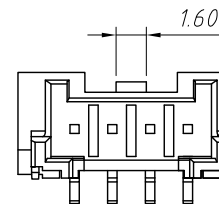
Contact Resistance: 10mΩ Max



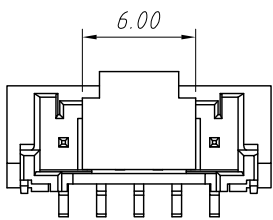
02P View



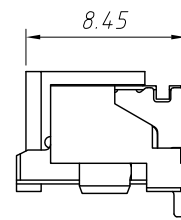
03P View



04P View



With CAP View

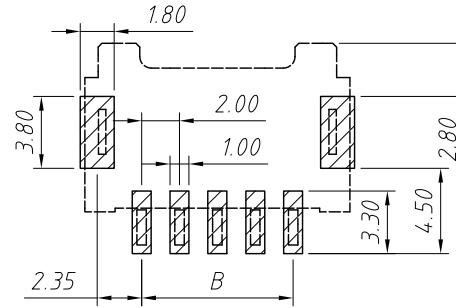
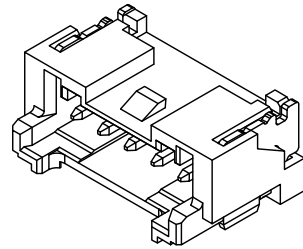
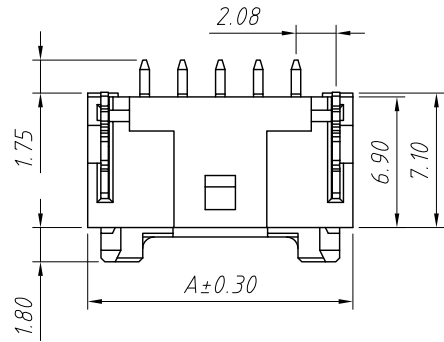


ANGLE TOLERANCE	PROJECTION	Description:	2.00mm pitch PA With lock Wire To Board Connectors
±3°			
GENERAL TOLERANCE	UNITS	mm	KLS P/N: L-KLS1-HX200-XX-VM
x.x ±0.30	SHEET SIZE	A4	
x.xx ±0.20	Draw:	Daniel	2021-01-11
x.xxx ±0.10	Check:	Daniel	2021-01-11



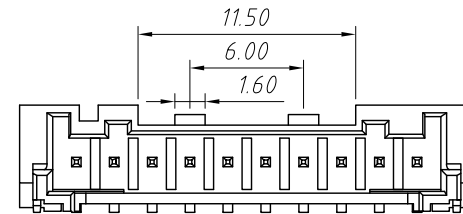
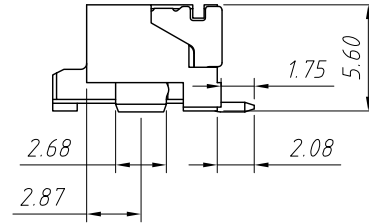
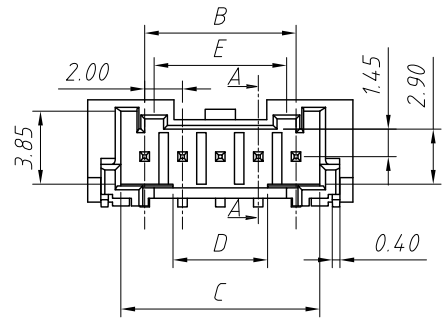
NingBo KLS ELECTRONIC CO., L TD.

RoHS Compliance



Recommended PCB Layout
Total tolerance: ±0.05mm

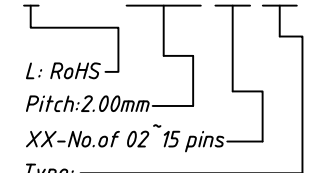
Pin	Dimensions(mm)				
	A	B	C	D	E
02	8.00	2.00	4.50	---	---
03	10.00	4.00	6.50	1.00	---
04	12.00	6.00	8.50	5.00	---
05	14.00	8.00	10.50	5.00	7.00
06	16.00	10.00	12.50	5.00	7.00
07	18.00	12.00	14.50	7.00	7.00
08	20.00	14.00	16.50	9.00	7.00
09	22.00	16.00	18.50	11.00	7.00
10	24.00	18.00	20.50	13.00	13.60
11	26.00	20.00	22.50	15.00	13.60
12	28.00	22.00	24.50	17.00	13.60
13	30.00	24.00	26.50	19.00	13.60
14	32.00	26.00	28.50	21.00	13.60
15	34.00	28.00	30.50	23.00	13.60



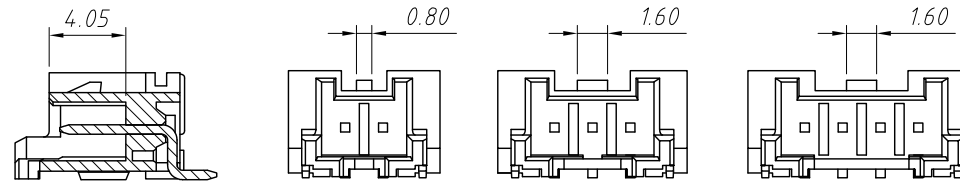
10-15P Two Clasp View

Order Information:

L-KLS1-HX200-XX-RM



Type: T-Terminal H-Hosing
S-Straight male pin
R-Right angle male pin
VM-Vertical SMT Pin
RM-Horizontal SMT Pin



A-A

02P View

03P View

04P View

Material:

Housing: PA9T, UL94V-0

Contact: Brass, Tin Plated over Nickel

Electrical Characteristics:

Rated Current: 3.0AMP

Voltage rating: 250V AC, DC

Temperature range: -40°C ~ +105°C

Insulator Resistance: 1000MΩ Min

Withstand Voltage: 800V AC/DC

Contact Resistance: 10mΩ Max

ANGLE TOLERANCE	PROJECTION	Description:	2.00mm pitch PA With lock Wire To Board Connectors
±3°			
GENERAL TOLERANCE	UNITS	mm	KLS P/N: L-KLS1-HX200-XX-RM
x.x ±0.30	SHEET SIZE	A4	
x.xx ±0.20	Draw:	Daniel	2021-01-11
x.xxx ±0.10	Check:	Daniel	2021-01-11



NingBo KLS ELECTRONIC CO., L.TD.