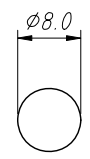
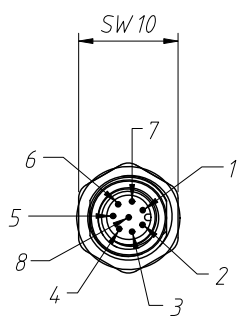
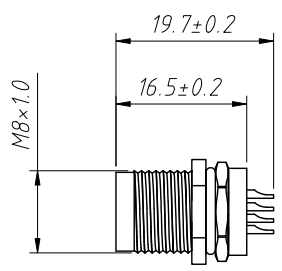


1
RoHS Compliance



Panel Cut-out

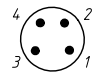
Material:
Insulation: PA66+GF, UL94V-0
Connector Pin: Brass, 0.025u" Gold plated
Nut/Screw: Brass, Nickel plating

Electrical Characteristics:
Rated current: 03Pin 4A, 06Pin 08Pin 1.5A
Rated voltage: 03~06Pin 60V, 08Pin 30V
Contact Resistance: 10mΩ Max

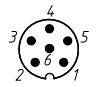
Mechanical properties:
IP rating: IP67
Wire gauge: 20~26AWG / 0.14~0.50mm²
Mechanical characteristics: mating/cycle > 100 cycle
Operating Temperature: -40°C ~ +85°C



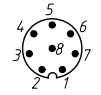
L-KLS15-M8A-L203



L-KLS15-M8A-L204



L-KLS15-M8A-L206



L-KLS15-M8A-L208

Order Information:

L-KLS15-M8A-L208
L: RoHS
Screw type: M8
A: A-Coding
Type: _____
L2: Soldering, Panel mount,
Front lock, Male
Number of Contacts: _____
(03P 04P 06P 08P)

ANGLE TOLERANCE	PROJECTION	Description:	IP67 M8 A-coding Soldering Male, Panel mount, Front lock
±3°			
GENERAL TOLERANCE	UNITS	mm	KLS P/N: L-KLS15-M8A-L208
x.x ±0.30	SHEET SIZE	A4	
x.xx ±0.20	Draw:	Daniel	2022-04-01
x.xxx ±0.10	Check:	Daniel	2022-04-01

