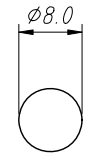
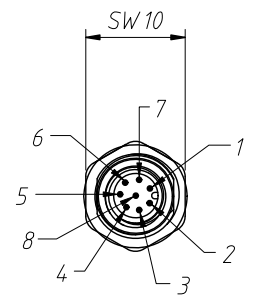
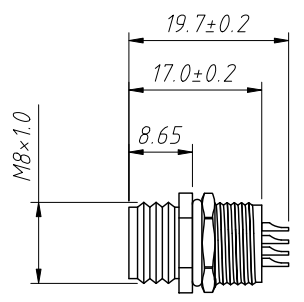


1
RoHS Compliance

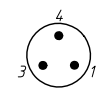


Panel Cut-out

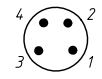
Material:
Insulation: PA66+GF, UL 94V-0
Connector Pin: Brass, 0.025u" Gold plated
Nut/Screw: Brass, Nickel plating

Electrical Characteristics:
Rated current: 03Pin 4A, 06Pin 08Pin 1.5A
Rated voltage: 03~06Pin 60V, 08Pin 30V
Contact Resistance: 10mΩ Max

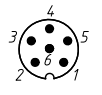
Mechanical properties:
IP rating: IP67
Wire gauge: 20~26AWG / 0.14~0.50mm²
Mechanical characteristics: mating/cycle > 100 cycle
Operating Temperature: -40°C ~ +85°C



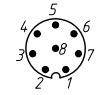
L-KLS15-M8A-B203



L-KLS15-M8A-B204



L-KLS15-M8A-B206



L-KLS15-M8A-B208

Order Information:

L-KLS15-M8A-B208
L: RoHS
Screw type: M8
A: A-Coding
Type: _____
B2: Soldering, Panel mount,
Rear lock, Male
Number of Contacts: _____
(03P 04P 06P 08P)

ANGLE TOLERANCE	PROJECTION	Description:	IP67 M8 A-coding Soldering Male, Panel mount, Rear lock
±3°			
GENERAL TOLERANCE	UNITS	mm	KLS P/N: L-KLS15-M8A-B208
x.x ±0.30	SHEET SIZE	A4	NingBo KLS ELECTRONIC CO.,L TD.
x.xx ±0.20	Draw:	Daniel 2022-04-01	
x.xxx ±0.10	Check:	Daniel 2022-04-01	