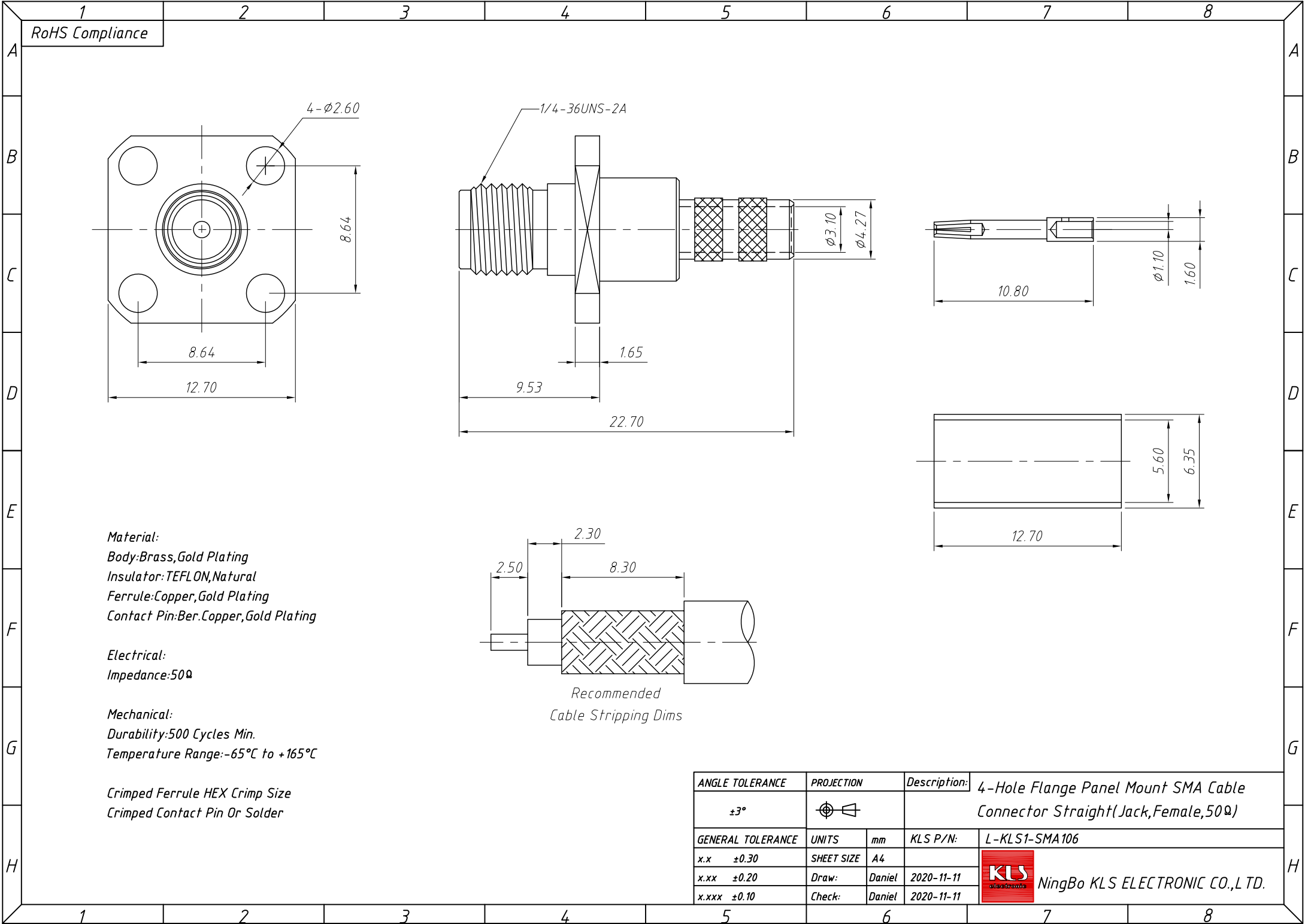


1
RoHS Compliance

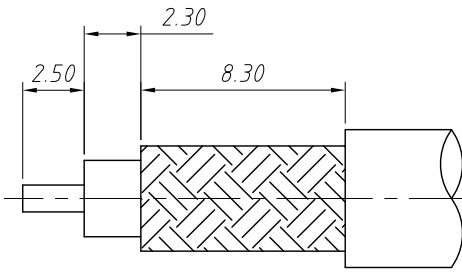


Material:
 Body: Brass, Gold Plating
 Insulator: TEFLON, Natural
 Ferrule: Copper, Gold Plating
 Contact Pin: Ber. Copper, Gold Plating

Electrical:
 Impedance: 50Ω

Mechanical:
 Durability: 500 Cycles Min.
 Temperature Range: -65°C to +165°C

Crimped Ferrule HEX Crimp Size
 Crimped Contact Pin Or Solder



Recommended Cable Stripping Dims

ANGLE TOLERANCE	PROJECTION	Description: 4-Hole Flange Panel Mount SMA Cable Connector Straight (Jack, Female, 50Ω)		
±3°				
GENERAL TOLERANCE	UNITS	mm	KLS P/N:	L-KLS1-SMA106
x.x ±0.30	SHEET SIZE	A4		
x.xx ±0.20	Draw:	Daniel	2020-11-11	NingBo KLS ELECTRONIC CO.,LTD.
x.xxx ±0.10	Check:	Daniel	2020-11-11	