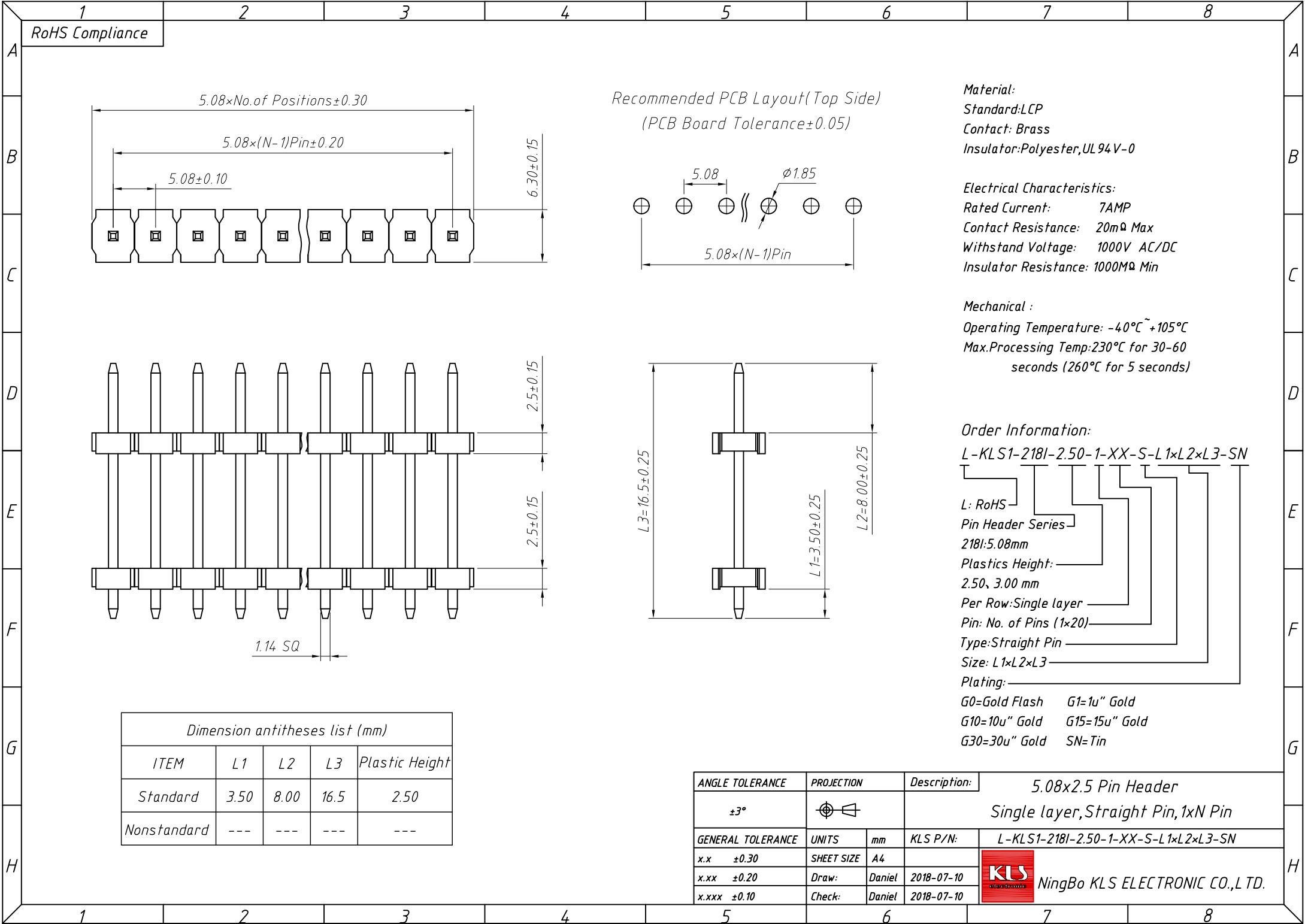
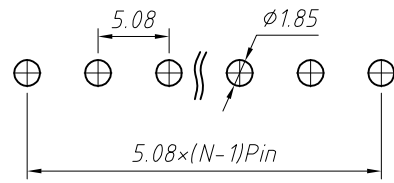


1  
RoHS Compliance



Recommended PCB Layout (Top Side)  
(PCB Board Tolerance  $\pm 0.05$ )



**Material:**  
Standard: LCP  
Contact: Brass  
Insulator: Polyester, UL 94 V-0

**Electrical Characteristics:**  
Rated Current: 7AMP  
Contact Resistance: 20m $\Omega$  Max  
Withstand Voltage: 1000V AC/DC  
Insulator Resistance: 1000M $\Omega$  Min

**Mechanical:**  
Operating Temperature:  $-40^{\circ}\text{C} \sim +105^{\circ}\text{C}$   
Max. Processing Temp:  $230^{\circ}\text{C}$  for 30-60 seconds ( $260^{\circ}\text{C}$  for 5 seconds)

**Order Information:**  
L-KLS1-218I-2.50-1-XX-S-L1xL2xL3-SN

L: RoHS  
Pin Header Series  
218I: 5.08mm  
Plastics Height:  
2.50, 3.00 mm  
Per Row: Single layer  
Pin: No. of Pins (1x20)  
Type: Straight Pin  
Size: L1xL2xL3  
Plating:  
G0=Gold Flash G1=1u" Gold  
G10=10u" Gold G15=15u" Gold  
G30=30u" Gold SN=Tin

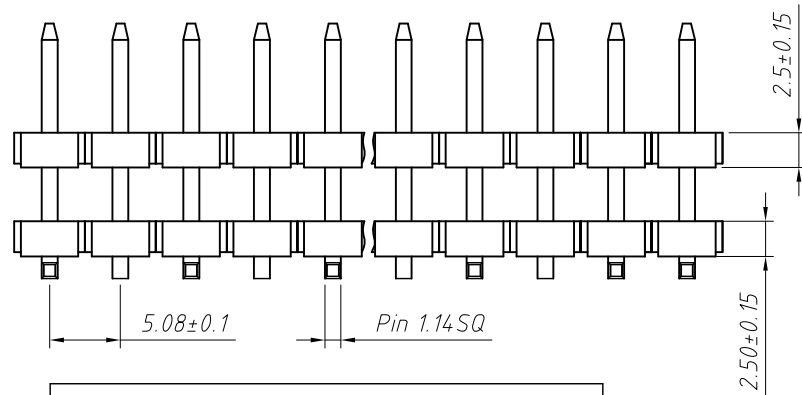
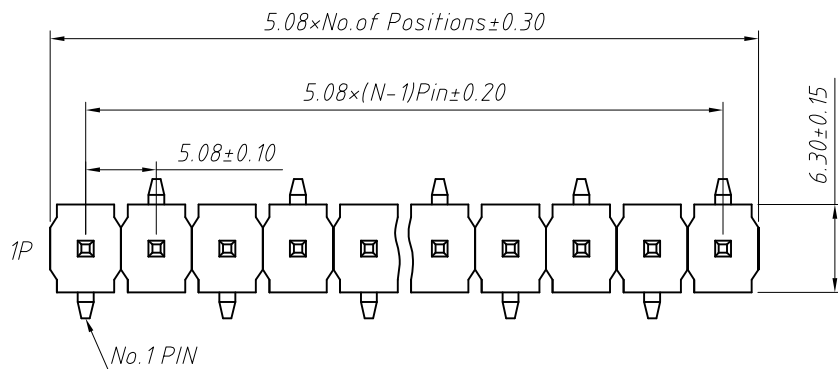
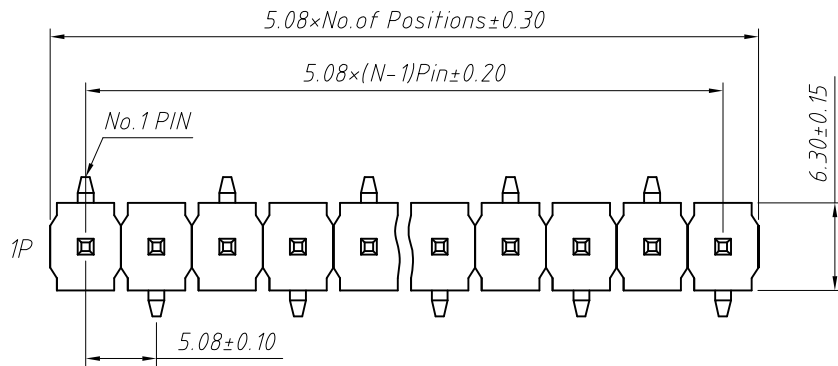
Dimension antitheses list (mm)

ITEM	L1	L2	L3	Plastic Height
Standard	3.50	8.00	16.5	2.50
Nonstandard	---	---	---	---

ANGLE TOLERANCE	PROJECTION	Description:	5.08x2.5 Pin Header	
$\pm 3^{\circ}$			Single layer, Straight Pin, 1xN Pin	
GENERAL TOLERANCE	UNITS	mm	KLS P/N:	L-KLS1-218I-2.50-1-XX-S-L1xL2xL3-SN
x.x $\pm 0.30$	SHEET SIZE	A4		
x.xx $\pm 0.20$	Draw:	Daniel	2018-07-10	
x.xxx $\pm 0.10$	Check:	Daniel	2018-07-10	

NingBo KLS ELECTRONIC CO.,L TD.

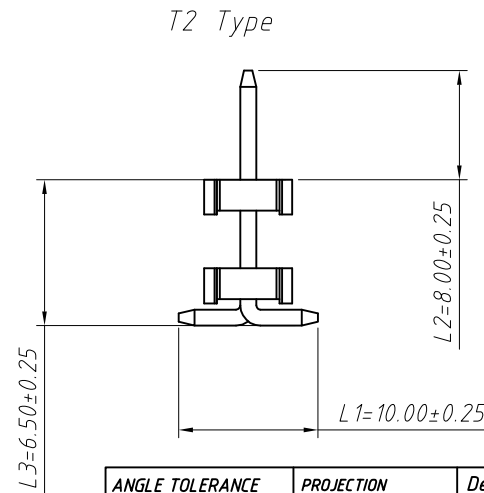
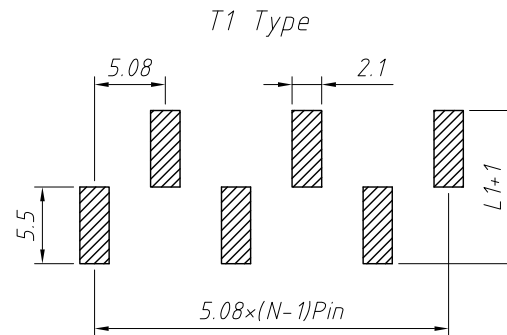
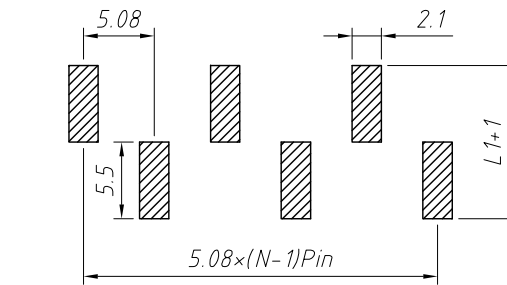
1 RoHS Compliance



Dimension antitheses list (mm)

ITEM	L1	L2	L3	Plastic Height
Standard	10.00	8.00	6.50	2.50
Nonstandard	---	---	---	---

Recommended PCB Layout (Top Side)  
(PCB Board Tolerance ± 0.05)



**Material:**  
Standard: LCP  
Contact: Brass  
Insulator: Polyester, UL 94V-0

**Electrical Characteristics:**

Rated Current: 7AMP  
Contact Resistance: 20mΩ Max  
Withstand Voltage: 1000V AC/DC  
Insulator Resistance: 1000MΩ Min

**Mechanical**

Operating Temperature: -40°C ~ +105°C  
Max. Processing Temp: 230°C for 30-60 seconds (260°C for 5 seconds)

**Order Information:**

L-KLS1-218I-2.50-1-XX-T1-L1xL2xL3-SN

L: RoHS  
Pin Header Series  
218I: 5.08mm  
Plastics Height: 2.50, 3.00 mm  
Per Row: Single layer  
Pin: No. of Pins (1x20)  
SMT Pin: T1 Type, T2 Type  
Size: L1xL2xL3  
Plating:  
G0=Gold Flash G1=1u" Gold  
G10=10u" Gold G15=15u" Gold  
G30=30u" Gold SN= Tin

ANGLE TOLERANCE	PROJECTION	Description:	5.08x2.5 Pin Header Single layer, SMT, 1xN Pin	
±3°				
GENERAL TOLERANCE	UNITS	mm	KLS P/N:	L-KLS1-218I-2.50-1-XX-T1-L1xL2xL3-SN
x.x ±0.30	SHEET SIZE	A4		
x.xx ±0.20	Draw:	Daniel	2018-07-10	
x.xxx ±0.10	Check:	Daniel	2018-07-10	

NingBo KLS ELECTRONIC CO., L TD.