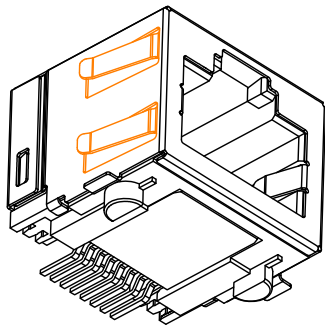
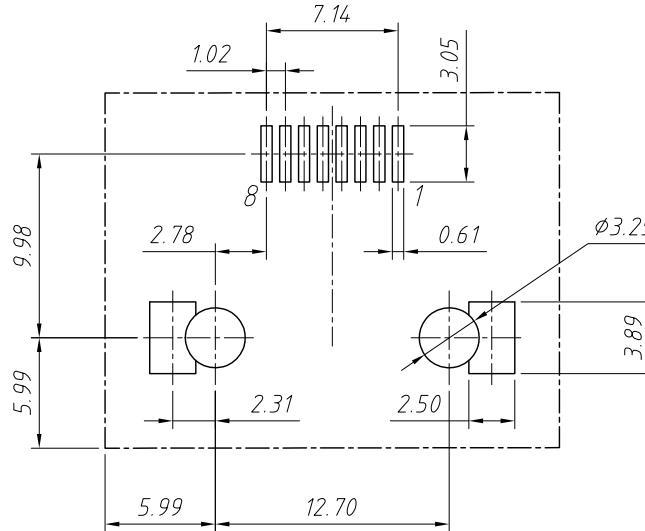
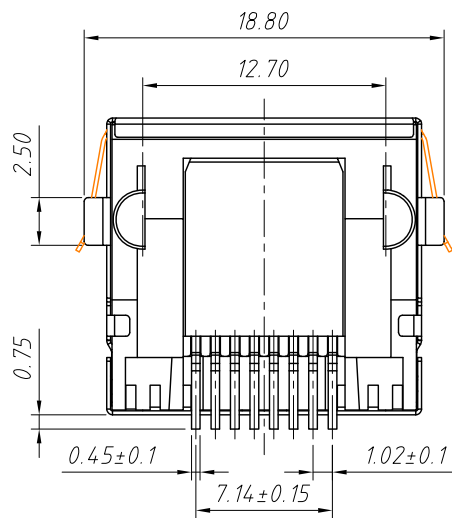
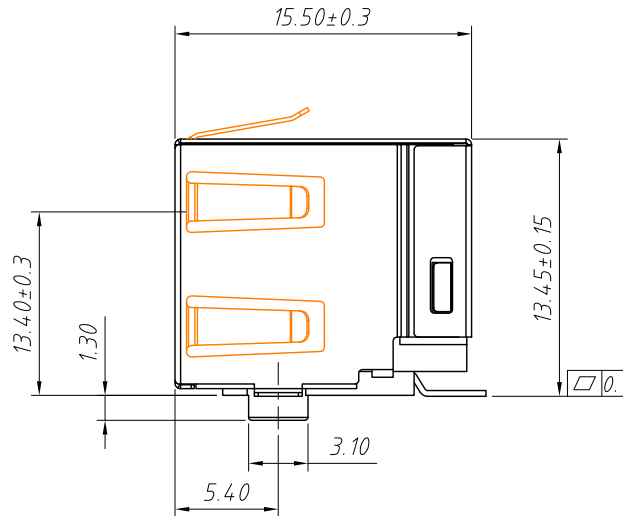
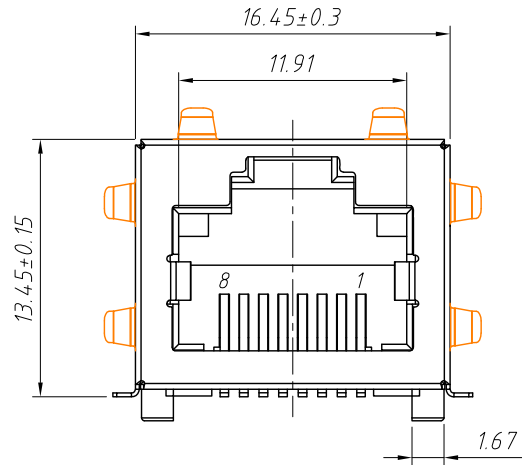


1 RoHS Compliance



Recommend PCB Layout

Jack Top View
Tolerance±0.05

Electrical:

- 1.Voltage Rating:125VAC
- 2.Current Rating:1.5A
- 3.Contact Resistance:30mΩ Max.
- 4.Insulation Resistance:1000MΩ Min.@500VDC
- 5.Withstanding Resistance:1000VAC RMS. 50Hz 1minute

Materials:

- 1.Housing:High Temp.(FR52),UL 94 V-0,Standard Black.
- 2.Contact: Phosphor Bronze T=0.35mm
- 3.Plating:Gold Plating over nickel in contact,
Tin Plating over nickel in solder area
- 4.Shield:0.23 Thickness Brass With Nickel Plated

Mechanical:

- 1.Durability:750 cycles Min.
- 2.PCB Retention pre-solder:1LB Min.

Environmental:

- 1.Storage: -40°C ~ +85°C
- 2.Operation: -40°C ~ +85°C

Order Information:

L-KLS12-SMT33-8P8C-E-XX-R

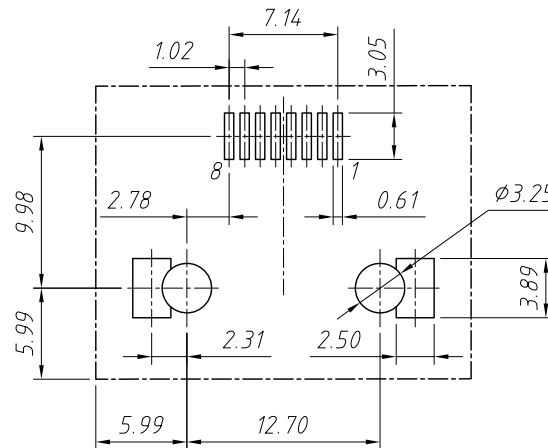
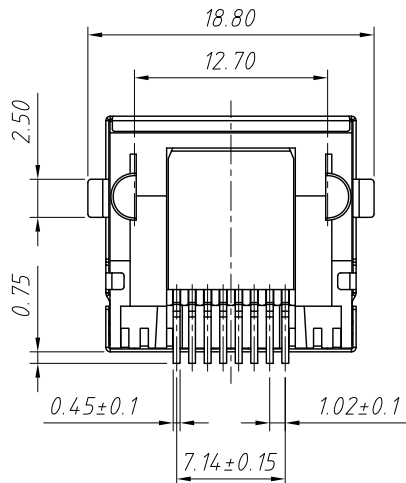
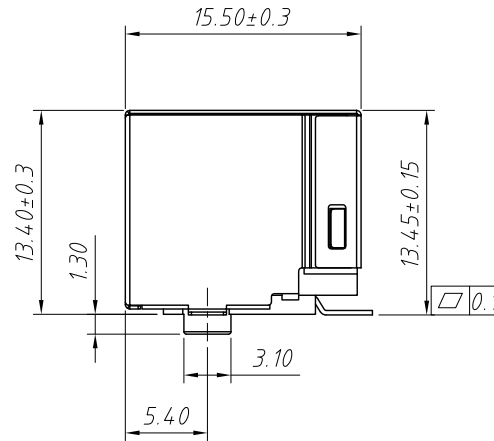
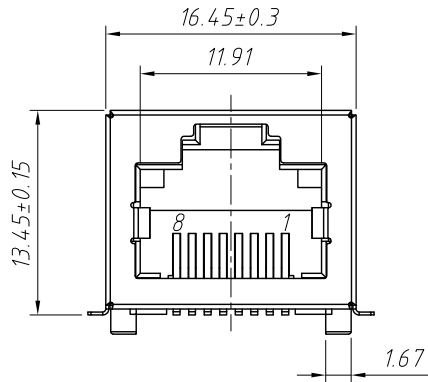
- L: RoHS
- SMT series
- Point No:8P8C
- Shield Code:E-EMI Shield
- Plating:
- 01: Fu" Gold 02: 3u" Gold
- 03: 6u" Gold 04: 15u" Gold
- 05: 30u" Gold
- Packing:R-Reel P-Blister Tray

ANGLE TOLERANCE	PROJECTION	Description:	
±3°		RJ45-8P8C SMD Jack Horizontal, With EMI Shielded	
GENERAL TOLERANCE	UNITS	mm	KLS P/N:
x.x ±0.30	SHEET SIZE	A4	L-KLS12-SMT33-8P8C-E-XX-R
x.xx ±0.20	Draw:Jenny	Daniel	2021-08-01
x.xxx ±0.10	Check:Daniel	Daniel	2021-08-01

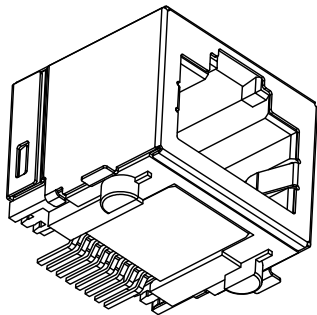


NingBo KLS ELECTRONIC CO.,L TD.

1 RoHS Compliance



Recommend PCB Layout
Jack Top View
Tolerance±0.05



Electrical:

- 1.Voltage Rating:125VAC
- 2.Current Rating:1.5A
- 3.Contact Resistance:30mΩ Max.
- 4.Insulation Resistance:500MΩ Min.@500VDC
- 5.Withstanding Resistance:1000VAC RMS. 50Hz 1minute

Materials:

- 1.Housing:High Temp. Thermoplastic Flammability,UL 94 V-0
- 2.Contact: Phosphor Bronze
- 3.Plating:Gold Plating over nickel in contact,
Tin Plating over nickel in solder area
- 4.Shield:0.23 Thickness Brass With Nickel Plated

Mechanical:

- 1.Durability:750 cycles Min.
- 2.PCB Retention pre-solder:1LB Min.

Environmental:

- 1.Storage: -40°C ~ +80°C
- 2.Operation: -20°C ~ +70°C

Order Information:

L-KLS12-SMT33-8P8C-W-XX-R

- L: RoHS
- SMT series
- Point No:8P8C
- Shield Code:W-With Shield
- Plating:
 - 01: Fu" Gold
 - 02: 3u" Gold
 - 03: 6u" Gold
 - 04: 15u" Gold
 - 05: 30u" Gold
- Packing:R-Reel P-Blister Tray

ANGLE TOLERANCE	PROJECTION	Description:	RJ45-8P8C SMD Jack Horizontal, With Shielded
±3°			
GENERAL TOLERANCE	UNITS	mm	KLS P/N: L-KLS12-SMT33-8P8C-W-XX-R
x.x ±0.30	SHEET SIZE	A4	NingBo KLS ELECTRONIC CO.,L TD.
x.xx ±0.20	Draw:Jenny	Daniel	
x.xxx ±0.10	Check:Daniel	Daniel	
		2021-08-01	
		2021-08-01	