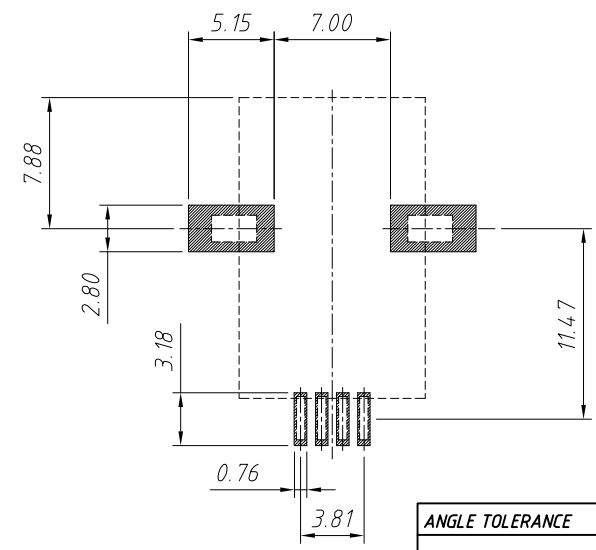
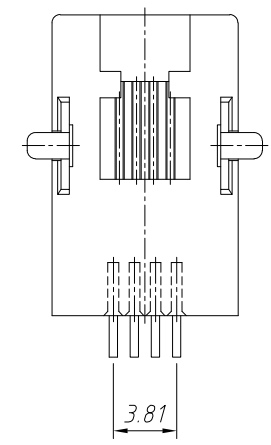
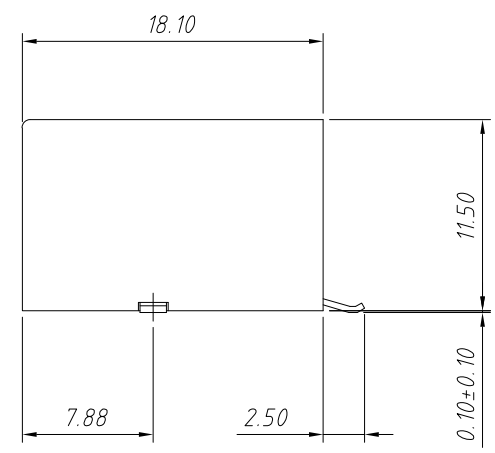
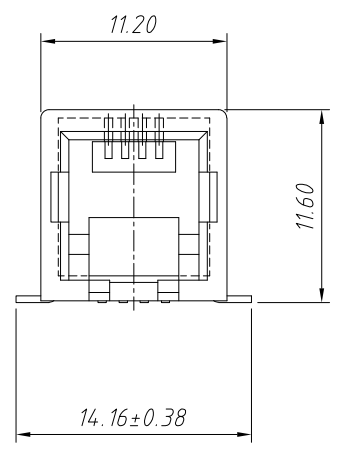


1 RoHS Compliance



PCB Layout
Top View

Electrical:
 1.Voltage Rating:125VAC
 2.Current Rating:1.5A
 3.Contact Resistance:40mΩ Max.
 4.Insulation Resistance:1000MΩ Min.@500VDC
 5.Withstanding Resistance:1000VAC RMS.60Hz 1minute

Materials:
 1.Housing:High Temp Thermoplastic Flammability, UL94V-0
 2.Contact:Phosphor Bronze
 3.Plating:Gold Plating Over Nickel In Contact
 Tin Planting Over Nickel In Solder Area

Mechanical:
 1.Durability:750 cycles Min.

Environmental:
 1.Storage: -40°C ~ +85°C
 2.Operation:-20°C ~ +75°C

Order Information:
L-KLS12-SMT13-4P4C-N-XX-P
 L: RoHS
 SMT series
 Point No:4P4C
 Shield Code:
 N-Without Shield
 Plating:
 01:Fu"Gold 02:3u"Gold 03:6u"Gold
 04:15u"Gold 05:30u"Gold
 Packing:R-Reel P-Blister Tray

ANGLE TOLERANCE	PROJECTION	Description:	RJ11-4P4C SMD Jack Horizontal, Without Shielded
±3°			
GENERAL TOLERANCE	UNITS	mm	KLS P/N: L-KLS12-SMT13-4P4C-N-XX-P
x.x ±0.30	SHEET SIZE	A4	NingBo KLS ELECTRONIC CO.,L TD.
x.xx ±0.20	Draw:Jenny	Daniel	
x.xxx ±0.10	Check:Daniel	Daniel	
		2021-08-01	
		2021-08-01	