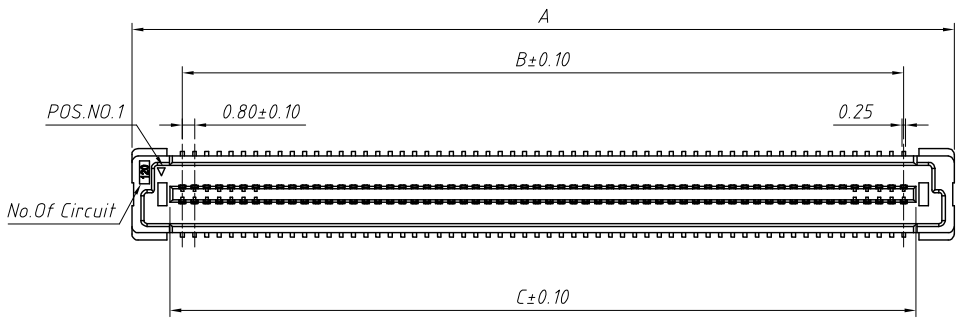


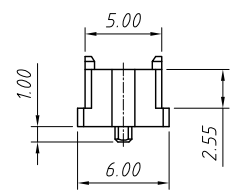
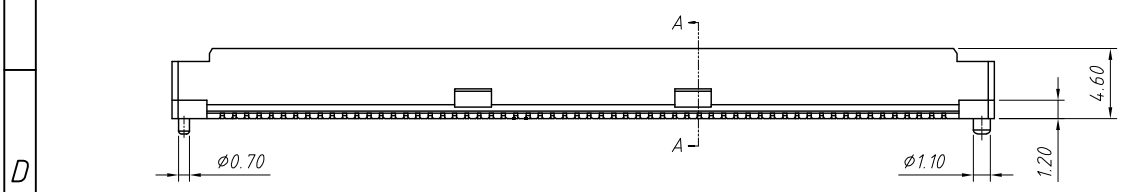
1 RoHS Compliance



| Circuit | A     | B     | C     | D     |
|---------|-------|-------|-------|-------|
| 40      | 21.80 | 15.20 | 16.80 | 20.20 |
| 60      | 29.80 | 23.20 | 24.80 | 28.20 |
| 80      | 37.80 | 31.20 | 32.80 | 36.20 |
| 100     | 45.80 | 39.20 | 40.80 | 44.20 |
| 120     | 53.80 | 47.20 | 48.80 | 52.20 |
| 140     | 61.80 | 55.20 | 56.80 | 60.20 |
| 160     | 69.80 | 63.20 | 64.80 | 68.20 |
| 180     | 77.80 | 71.20 | 72.80 | 76.20 |
| 200     | 85.80 | 79.20 | 80.80 | 84.20 |

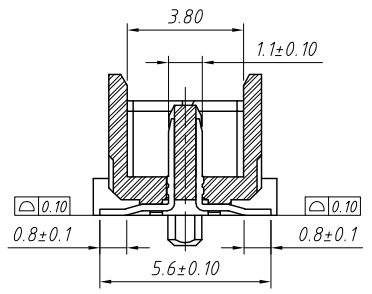
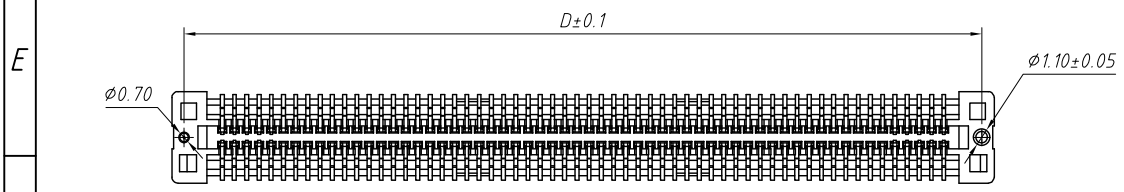
**Material and Plated**  
 1.Housing:High Temp Plastic,(LCP UL94V-0)  
 2.Contact:Phosphor Bronze  
 3.Plated:Gold Plated  
 4.Package:1000PCS/Reel

**Specifications:**  
 1.Current Rating:1.0A AC/DC  
 2.Voltage Rating:250V AC/DC  
 3.Contact Resistance:30mΩ. max.  
 4.Insulation Resistance:1000MΩ. min.  
 5.Withstanding Voltage:250V AC for one minute  
 6.Operating Temperature Range:-40°C to + 85°C



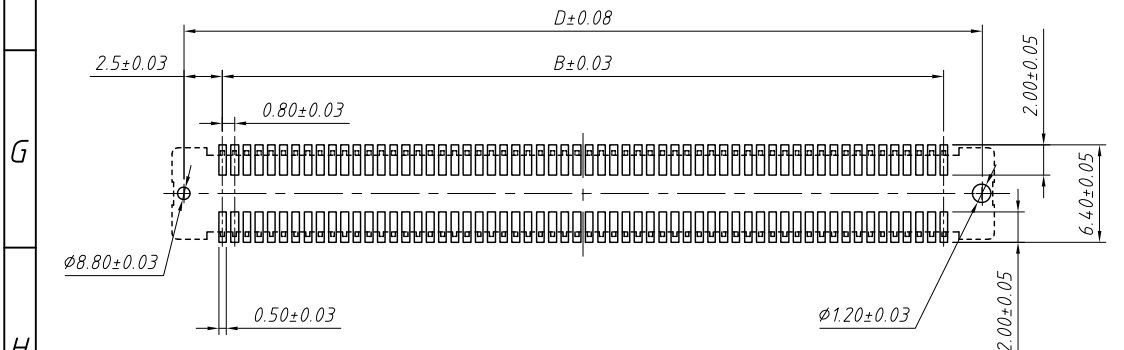
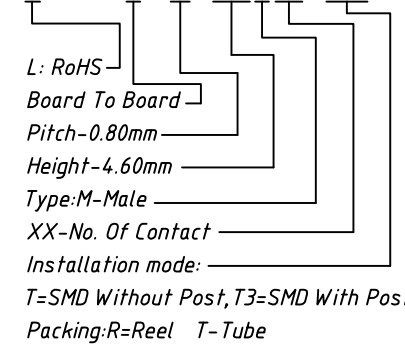
Mating Height Dimension

| P/N Plug   | P/N Socket | Matting Height |
|------------|------------|----------------|
| B0208-460M | B0208-375F | 5.00           |

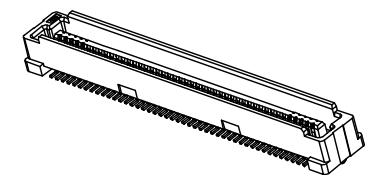


Section:A-A Scale 2:1

**Order Information:**  
 L-KLS1-B0208-460MXX-T3R



Recommended PCB Layout

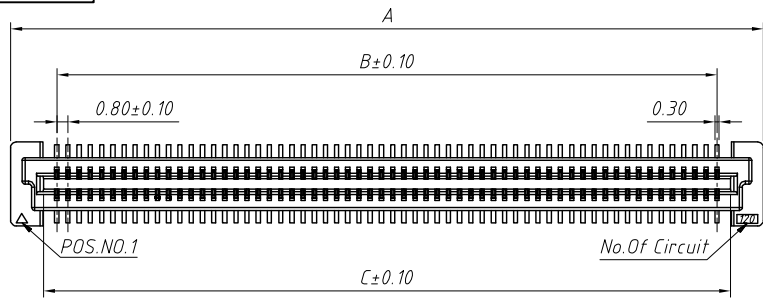


| ANGLE TOLERANCE   | PROJECTION | Description:                               |
|-------------------|------------|--|
| ±3°               |            | 0.8mm Board To Board Plug<br>4.60mm Height |
| GENERAL TOLERANCE | UNITS      | mm   |
| x.x ±0.30         | SHEET SIZE | A4   |
| x.xx ±0.20        | Draw:      | Daniel 2020-11-11                          |
| x.xxx ±0.10       | Check:     | Daniel 2020-11-11                          |



NingBo KLS ELECTRONIC CO.,LTD.

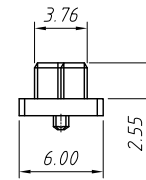
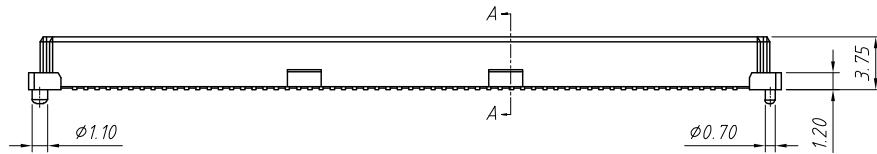
1 RoHS Compliance



| Circuit | A     | B     | C     | D     |
|---------|-------|-------|-------|-------|
| 40      | 21.80 | 15.20 | 17.10 | 20.20 |
| 60      | 29.80 | 23.20 | 25.10 | 28.20 |
| 80      | 37.80 | 31.20 | 33.10 | 36.20 |
| 100     | 45.80 | 39.20 | 41.10 | 44.20 |
| 120     | 53.80 | 47.20 | 49.10 | 52.20 |
| 140     | 61.80 | 55.20 | 57.10 | 60.20 |
| 160     | 69.80 | 63.20 | 65.10 | 68.20 |
| 180     | 77.80 | 71.20 | 73.10 | 76.20 |
| 200     | 85.80 | 79.20 | 81.10 | 84.20 |

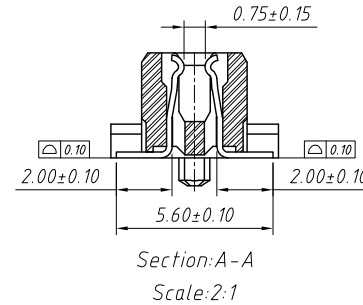
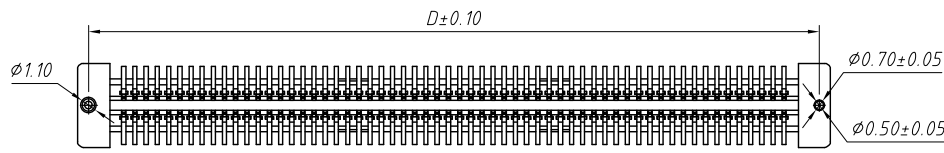
- Material and Plated**
- 1.Housing:High Temp Plastic,(LCP UL94V-0) Natural
  - 2.Contact:Phosphor Bronze
  - 3.Plated:Gold Plated
  - 4.Package :1000pcs/Reel

- Specifications:**
- 1.Current Rating:1.0A AC/DC
  - 2.Voltage Rating:250V AC/DC
  - 3.Contact Resistance:30mΩ. max.
  - 4.Insulation Resistance:1000MΩ. min.
  - 5.Withstanding Voltage:250V AC for one minute
  - 6.Operating Temperature Range:-40°C to + 85°C



Mating Height Dimension

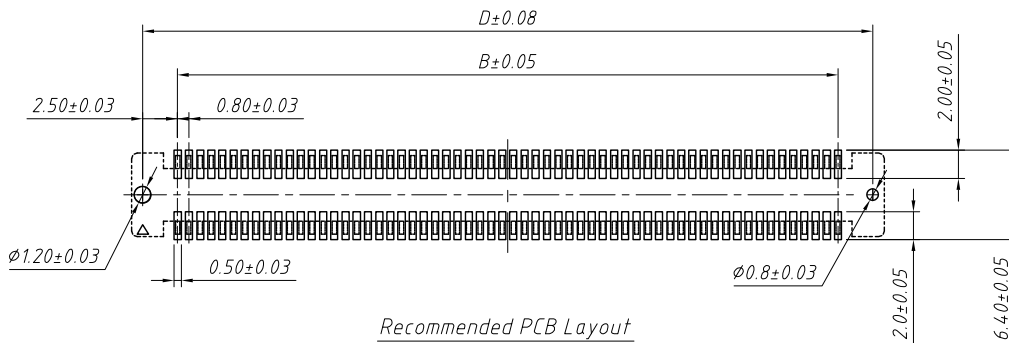
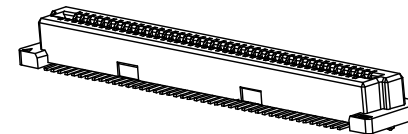
| P/N Plug   | P/N Socket | Mating Height |
|------------|------------|---------------|
| B0208-460M | B0208-375F | 5.00          |



Order Information:

L-KLS1-B0208-375FXX-T3R

- L: RoHS
- Board To Board
- Pitch-0.80mm
- Height-3.75mm
- Type:F-Female
- XX-No. Of Contact
- Installation mode:
- T=SMD Without Post, T3=SMD With Post
- Packing:R=Reel T=Tube



| ANGLE TOLERANCE   | PROJECTION | Description:                                 |                         |
|-------------------|------------|--|-------------------------|
| ±3°               |            | Pitch 0.8mm Board to Board Connector H5.00mm |                         |
| GENERAL TOLERANCE | UNITS      | mm   | KLS P/N:                |
| x.x ±0.30         | SHEET SIZE | A4   | L-KLS1-B0208-375FXX-T3R |
| x.xx ±0.20        | Draw:      | Daniel                                       | 2020-11-11              |
| x.xxx ±0.10       | Check:     | Daniel                                       | 2020-11-11              |



NingBo KLS ELECTRONIC CO.,L TD.