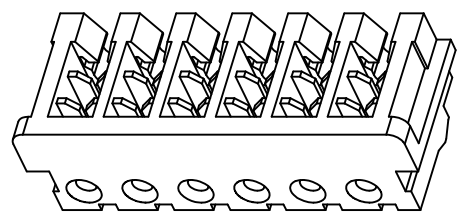
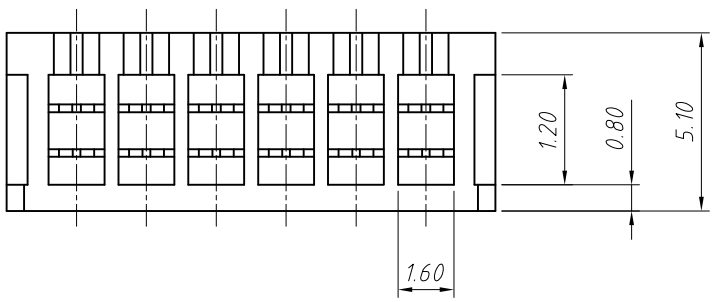
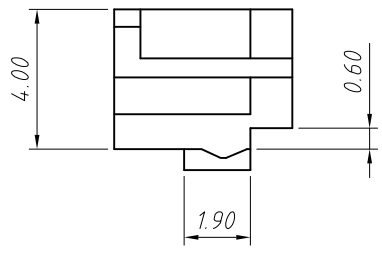
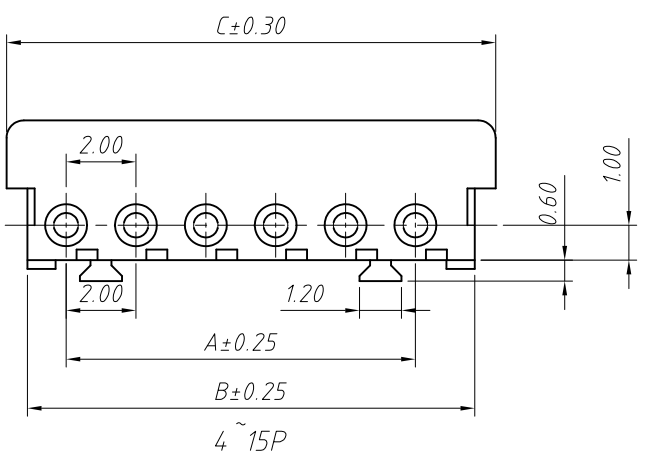


1  
RoHS Compliance



Material:  
Housing: PBT,UL94V-0  
Contacts: Phosphor Bronze  
Finish : Plated Tin or Gold Flash Lead over Nickel

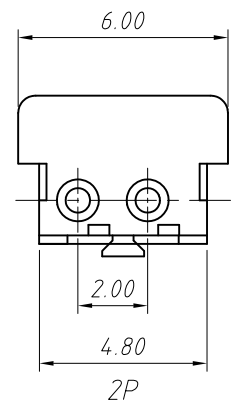
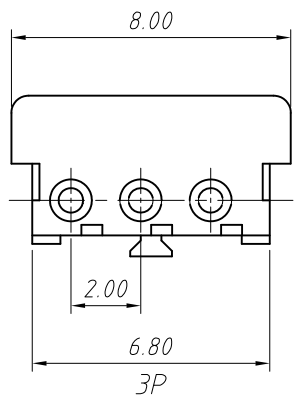
Electrical Characteristics:  
Current rating: 2A AC,DC  
Voltage rating: 125V AC,DC  
Insulation resistance: 1000MΩ/Min.  
Withstanding voltage: 1000V AC/minute  
Contact resistance: 20mΩ/Max.  
Temperature range: -35°C ~ +85°C  
Applicable wire size: AWG#28-#26  
Insulation diameter range: 0.83-1.05mm



Butterfly button

Pos	Dimension mm		
	A	B	C
02	-As show-		
03	-As show-		
04	6.00	8.80	10.00
05	8.00	10.80	12.00
06	10.00	12.80	14.00
07	12.00	14.80	16.00
08	14.00	16.80	18.00
09	16.00	18.80	20.00
10	18.00	20.80	22.00
11	20.00	22.80	24.00
12	22.00	24.80	26.00
13	24.00	26.80	28.00
14	26.00	28.80	30.00
15	28.00	30.80	32.00

Order Information:  
L-KLS1-XL6-2.00-XX  
L: RoHS  
IDC connectors  
2.00mm Pitch  
XX-No. of 02~15pin



ANGLE TOLERANCE	PROJECTION	Description:
±3°		2.00mm AMP IDC type Wire Connector
GENERAL TOLERANCE	UNITS	mm
x.x ±0.30	SHEET SIZE	A4
x.xx ±0.20	Draw:	Daniel 2018-07-10
x.xxx ±0.10	Check:	Daniel 2018-07-10

**KLS** NingBo KLS ELECTRONIC CO.,LTD.

L-KLS1-XL6-2.00-XX