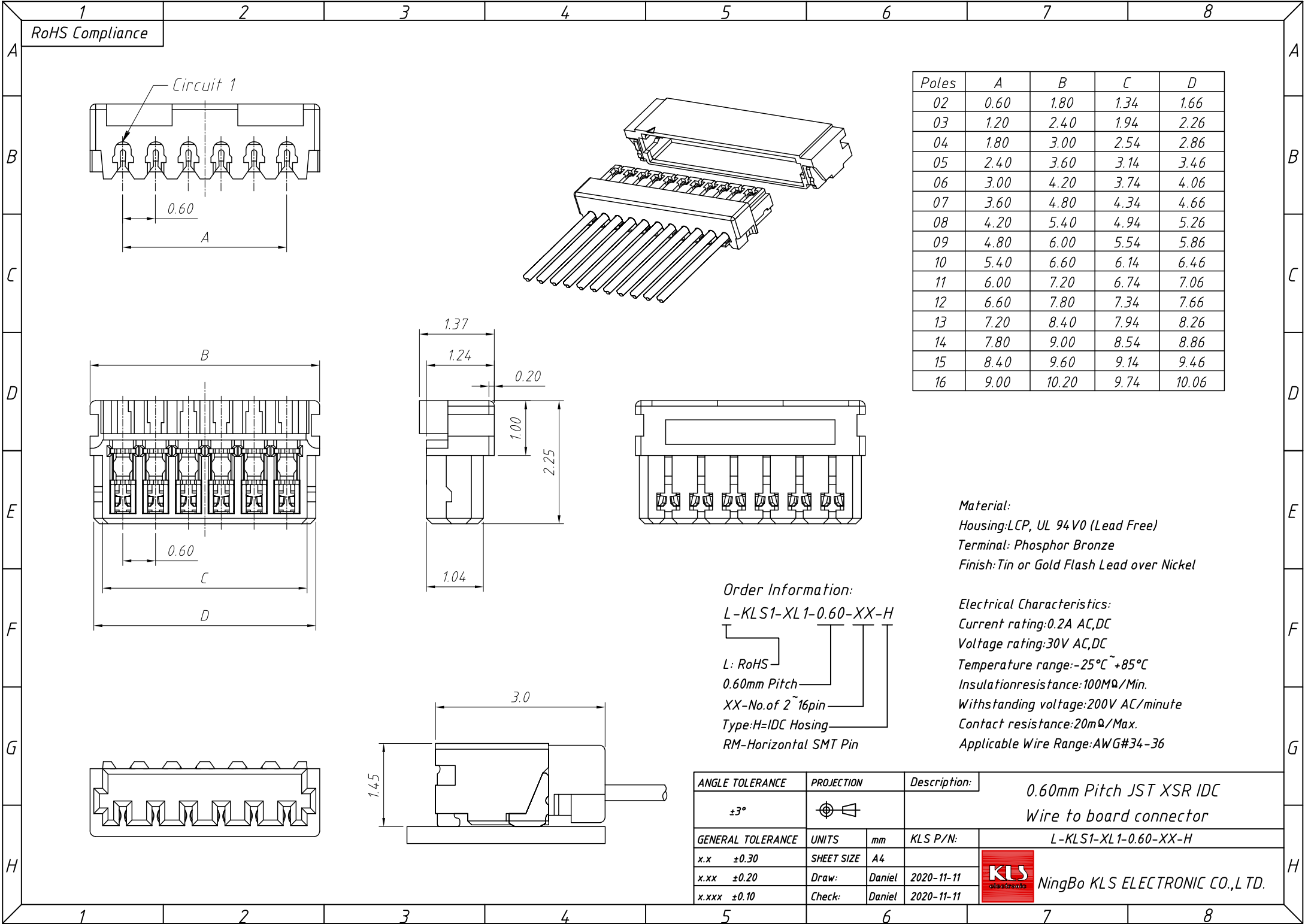


1
RoHS Compliance



Poles	A	B	C	D
02	0.60	1.80	1.34	1.66
03	1.20	2.40	1.94	2.26
04	1.80	3.00	2.54	2.86
05	2.40	3.60	3.14	3.46
06	3.00	4.20	3.74	4.06
07	3.60	4.80	4.34	4.66
08	4.20	5.40	4.94	5.26
09	4.80	6.00	5.54	5.86
10	5.40	6.60	6.14	6.46
11	6.00	7.20	6.74	7.06
12	6.60	7.80	7.34	7.66
13	7.20	8.40	7.94	8.26
14	7.80	9.00	8.54	8.86
15	8.40	9.60	9.14	9.46
16	9.00	10.20	9.74	10.06

Material:
Housing:LCP, UL 94 V0 (Lead Free)
Terminal: Phosphor Bronze
Finish: Tin or Gold Flash Lead over Nickel

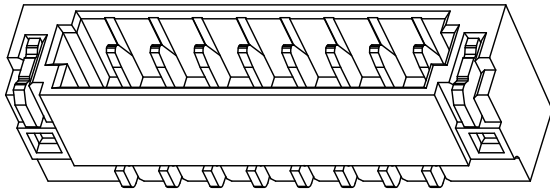
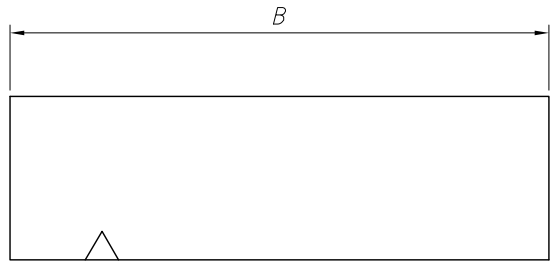
Electrical Characteristics:
Current rating:0.2A AC,DC
Voltage rating:30V AC,DC
Temperature range:-25°C~+85°C
Insulation resistance:100MΩ/Min.
Withstanding voltage:200V AC/minute
Contact resistance:20mΩ/Max.
Applicable Wire Range:AWG#34-36

Order Information:
L-KLS1-XL1-0.60-XX-H
L: RoHS
0.60mm Pitch
XX-No. of 2~16pin
Type:H=IDC Hosing
RM-Horizontal SMT Pin

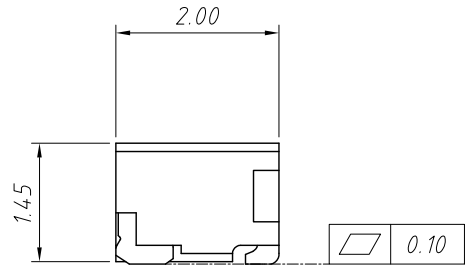
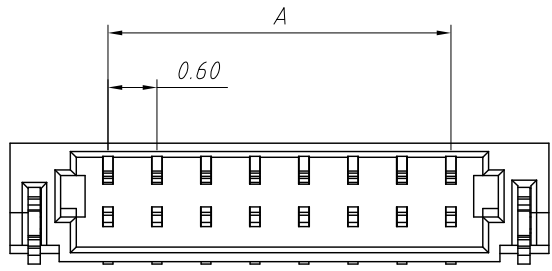
ANGLE TOLERANCE	PROJECTION	Description:	
±3°		0.60mm Pitch JST XSR IDC Wire to board connector	
GENERAL TOLERANCE	UNITS	mm	KLS P/N:
x.x ±0.30	SHEET SIZE	A4	L-KLS1-XL1-0.60-XX-H
x.xx ±0.20	Draw:	Daniel	2020-11-11
x.xxx ±0.10	Check:	Daniel	2020-11-11



1
RoHS Compliance



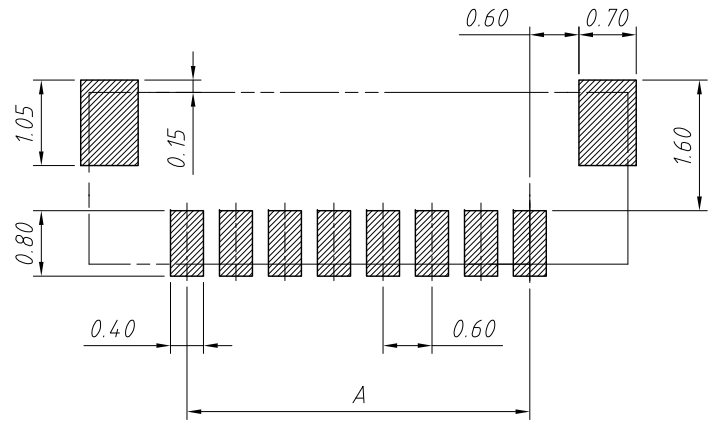
Poles	A	B	C	D
02	0.60	1.80	1.34	1.66
03	1.20	2.40	1.94	2.26
04	1.80	3.00	2.54	2.86
05	2.40	3.60	3.14	3.46
06	3.00	4.20	3.74	4.06
07	3.60	4.80	4.34	4.66
08	4.20	5.40	4.94	5.26
09	4.80	6.00	5.54	5.86
10	5.40	6.60	6.14	6.46
11	6.00	7.20	6.74	7.06
12	6.60	7.80	7.34	7.66
13	7.20	8.40	7.94	8.26
14	7.80	9.00	8.54	8.86
15	8.40	9.60	9.14	9.46
16	9.00	10.20	9.74	10.06



Material:
 Wafer: LCP, UL 94V0 (Natural/Belge)
 Shell: Brass, Gold-Flash
 Pin: Phosphor Bronze
 Finish: Tin or Gold Flash Lead over Nickel

Electrical Characteristics:
 Current rating: 0.2A AC, DC
 Voltage rating: 30V AC, DC
 Temperature range: -25°C ~ +85°C
 Insulation resistance: 100MΩ/Min.
 Withstanding voltage: 200V AC/minute
 Contact resistance: 20mΩ/Max.
 Applicable Wire Range: AWG#34-36

Order Information:
 L-KLS1-XL1-0.60-XX-RM
 L: RoHS
 0.60mm Pitch
 XX-No. of 2 ~ 16pin
 Type: H=IDC Hosing
 RM=Horizontal SMT Pin



PCB LAYOUT

ANGLE TOLERANCE	PROJECTION	Description:	0.60mm Pitch JST XSR IDC Wire to board connector
±3°			
GENERAL TOLERANCE	UNITS	mm	KLS P/N: L-KLS1-XL1-0.60-XX-RM
x.x ±0.30	SHEET SIZE	A4	NingBo KLS ELECTRONIC CO.,L TD.
x.xx ±0.20	Draw:	Daniel 2020-11-11	
x.xxx ±0.10	Check:	Daniel 2020-11-11	