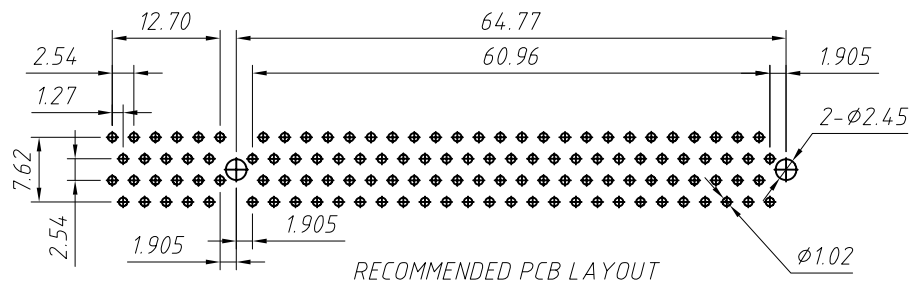
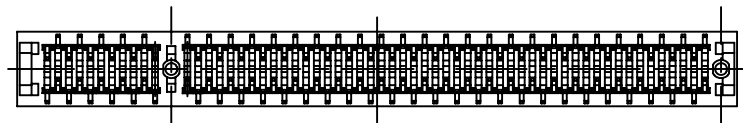
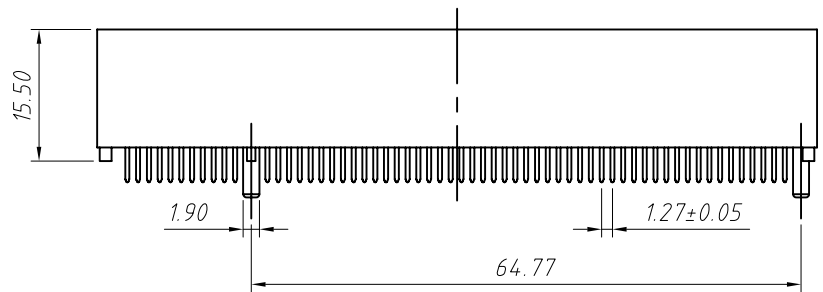
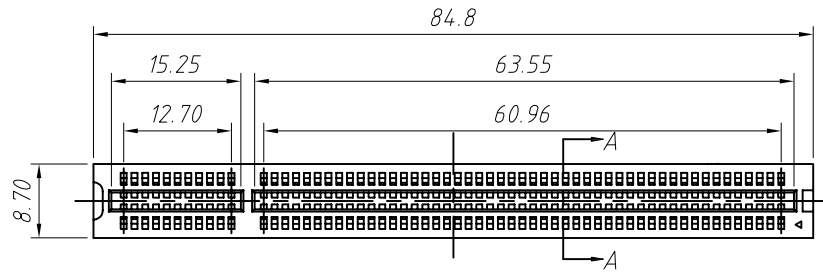


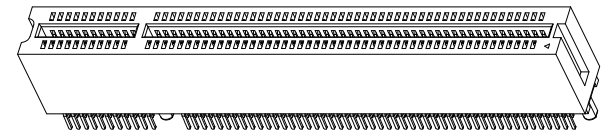
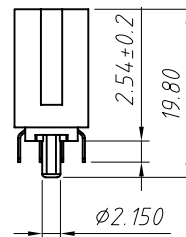
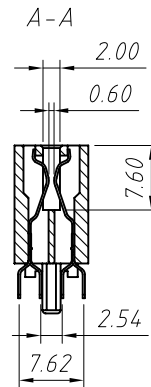
1 RoHS Compliance



Material:
 Insulator: Glass-Reinforced Thermoplastic
 Contact: Copper Alloy.
 Plating: Mating Area-Gold Flash Gold Over Nickel.
 Solder Area-Tin/Lead Over Nickel.

Electrical
 Voltage Rating: 250 VAC R.M.S.
 Current Rating: 1 Amp.
 Dielectric Withstanding Voltage: 500 VAC R.M.S. 60hz For 1 Minute.
 Insulation Resistance: 1000M Ω Min At 500 VDC
 Contact Resistance: 30 m Ω Max. At 1 Amp DC.

Mechanical
 Retention Force: 460 Grams Min Per Contact.
 Insertion Force: 230 Grams Max Per Contact Pair.
 Withdrawal Force: 15 Grams Min Per Contact Pair.



Order Information:

L-KLS1-503B-120-S-W

L: RoHS
 120-No. of 120pin
 S-Straight pin
 W-White G-Green B-Black

ANGLE TOLERANCE	PROJECTION	Description:		
±3°		1.27mm Pitch PCI Card Connector 120 Pin DIP 180		
GENERAL TOLERANCE	UNITS	mm	KLS P/N:	L-KLS1-503B
x.x ±0.30	SHEET SIZE	A4		
x.xx ±0.20	Draw:	Daniel	2020-11-11	
x.xxx ±0.10	Check:	Daniel	2020-11-11	

NingBo KLS ELECTRONIC CO.,L TD.