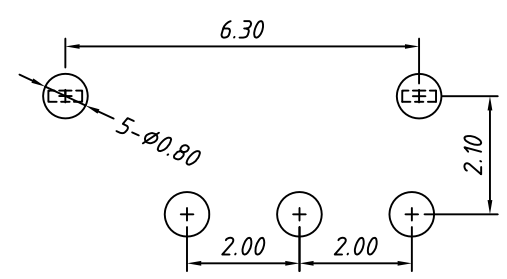
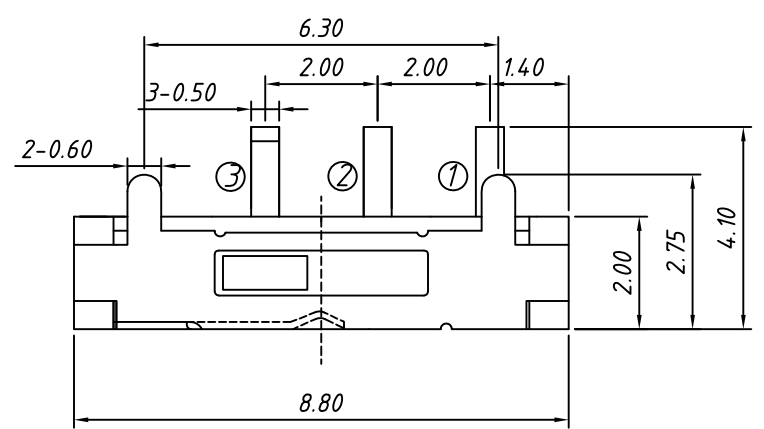


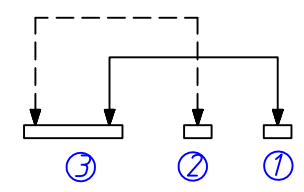
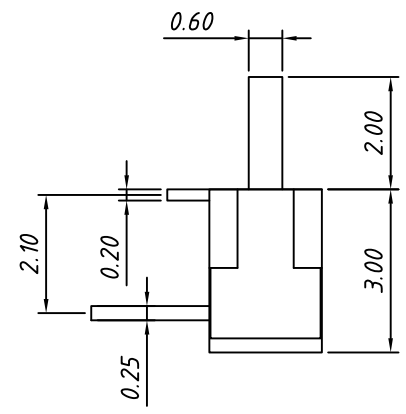
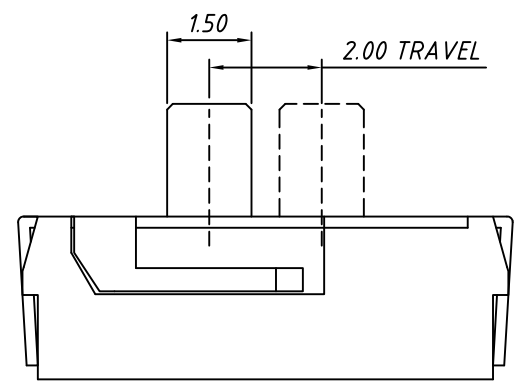
1  
RoHS Compliance

**ELECTRICAL**  
 Rating: 0.3A 6V DC  
 Function: 1P2T  
 Timing: Non-shorting  
 Contact Resistance: 70mΩ Max.  
 Insulation Resistance: 100MΩ Min. at 500V DC  
 Dielectric Strength: AC 500V for 1 min  
 Operating Temper: -20°C ~ +75°C  
 Operating Force: 130 ± 50gf  
 Life Test: 10000 Cycles  
 PACKING: 1000PCS/Bag

Order Information:  
 L-KLS7-MSS-1270H  
 RoHS  
 SPDT



PCB LAYOUT



CIRCUIT

5	TERMINAL	C2680	Ag PLATED	3
4	CONTACT	C5210	Ag PLATED	1
3	BOTTOM	PA6T	Black	1
2	COVER	SUS	NATURAL	1
1	STEM	PPA	Black	1
NO.	PARTS	MATERIAL	FINISHING & COLOR	Q'TY

GENERAL TOLERANCE	PROJECTION		Description:
X. ±0.20	UNITS	mm	Mini Slide Switch,
	SCALE	1:1	8.8x3.0x2.0mm, SPDT DIP Horizontal
	Draw by:	Daniel	KLS P/N: L-KLS7-MSS-1270H
ANGLE TOLERANCE	Check by:	Daniel	NingBo KLS ELECTRONIC CO.,L TD.
±3°	Date	2020-08-30	
	SHEET	1 OF 1	