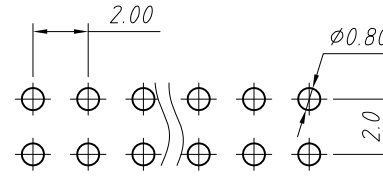
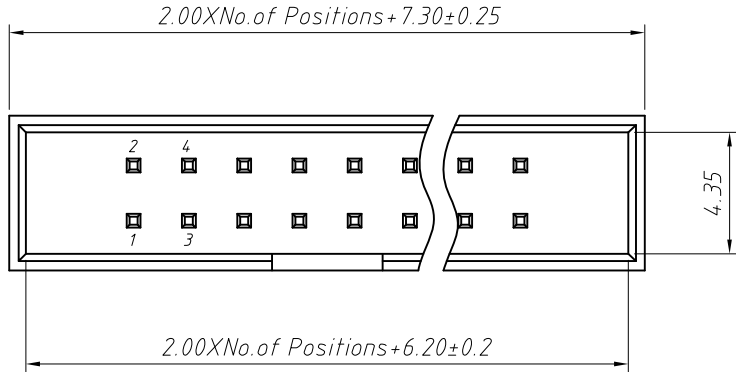


1 RoHS Compliance

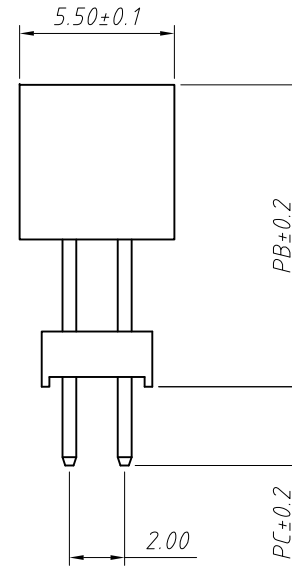
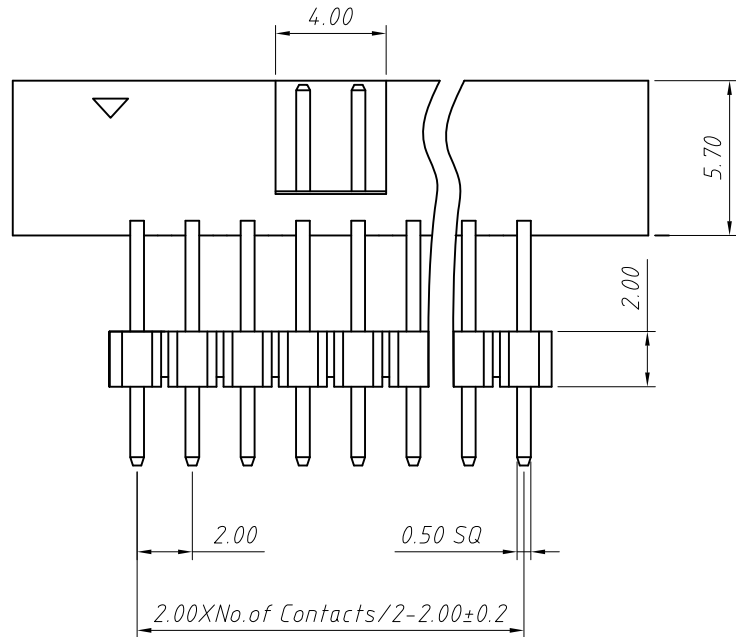


Recommended P.C.B Layout (Top Side)
(PCB BOARD TOLERANCE±0.05)

Material:
Housing:PA6T,UL94V-0
Contact:Brass
Plating:Gold plated

Electrical Characteristics:
Rated Current: 1.5AMP
Contact Resistance: 20mΩ Max
Withstand Voltage: 400V AC/DC
Insulator Resistance: 800MΩ Min

Mechanical
Operating Temperature: -40°C~+105°C
Max.Processing Temp:230°C for 30-60 seconds (260°C for 10 seconds)



Order Information:

L-KLS1-202BC-XX-S-B-PB×PC-□

L: RoHS
Box Header Series
202BC:2.00mm Pitch
XX-No. of 06~64 pin
Type:S-Straight pin
T-SMT
Color:B-Black G-Gray
Size:PB×PC
Material:NONE=PA6T
A=PBT C=LCP

Dimension antitheses list

ITEM	PC	PB
Standard	2.80	---
Alternate	---	---

ANGLE TOLERANCE	PROJECTION	Description:
±3°		2.00mm Pitch Box Header Connector
GENERAL TOLERANCE	UNITS	mm
x.x ±0.30	SHEET SIZE	A4
x.xx ±0.20	Draw:	Daniel 2018-07-10
x.xxx ±0.10	Check:	Daniel 2018-07-10



NingBo KLS ELECTRONIC CO.,L TD.

