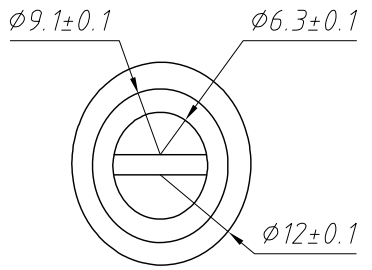
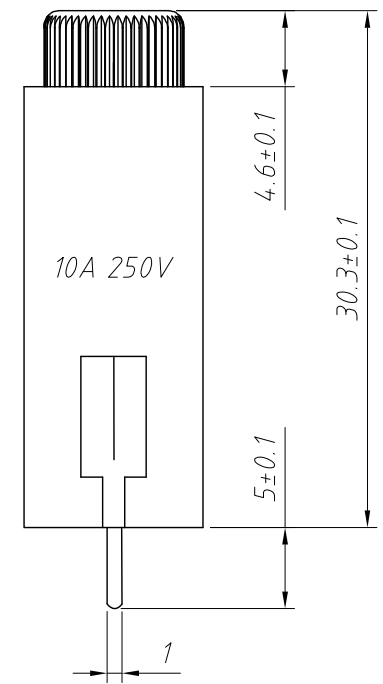
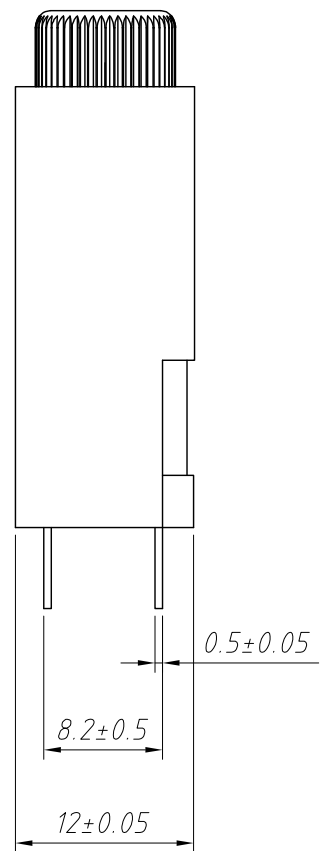


1  
RoHS Compliance



Fuse size:  $\phi 5 \times 20 \text{mm}$   
 Rating: 10A 250V AC  
 Insulation resistance: DC 500V 100M $\Omega$  Min  
 Voltage breakdown: AC 1500V 1 minute 0V 1 minute



ANGLE TOLERANCE	PROJECTION	Description:		
$\pm 3^\circ$		PCB Fuse Holder For Fuse 5.2X20mm		
GENERAL TOLERANCE	UNITS	mm	KLS P/N:	L-KLS5-111-P8
x.x $\pm 0.30$	SHEET SIZE	A4		
x.xx $\pm 0.20$	Draw:	Daniel	2018-07-10	 NingBo KLS ELECTRONIC CO.,LTD.
x.xxx $\pm 0.10$	Check:	Daniel	2018-07-10	