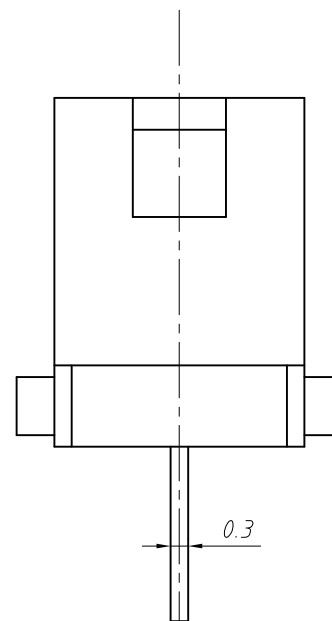
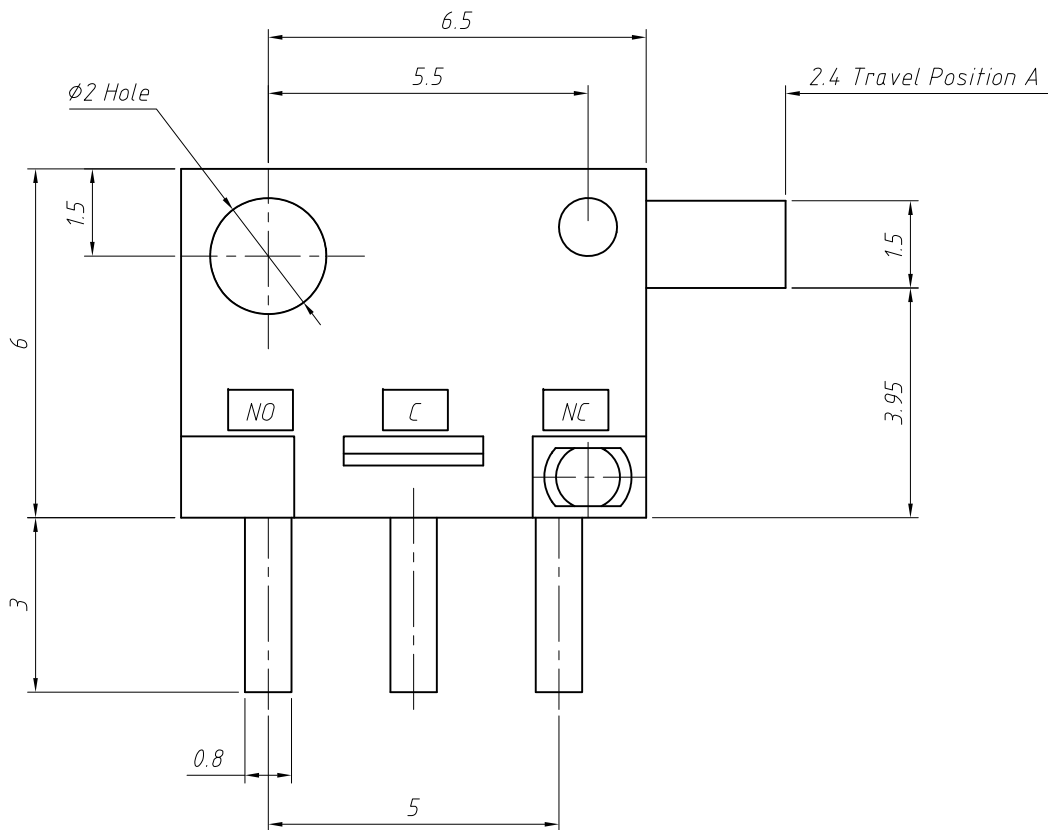
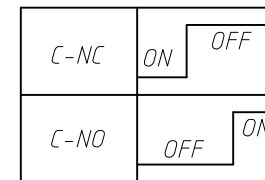


Recommended PAD Layout ±0.05
TOP VIEW

Detector Switch
SPECIFICATION:
Rating: 0.1A 30V DC
Operating Force: 50gf
Electrical Strength: AC 250 V 1 Minute
Insulation Resistance: 100 MΩ Min. 250V DC
Contact Resistance: 100MΩ Max.
Operating Temperature: -10oC ~ +70oC
Mechanical Life: 50,000 cycles
Electrical Life: 10,000 cycles

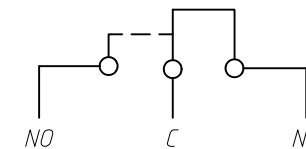


SWITCH SEQUENCE



0 0.8 1.5 2.4

Travel Position A



CIRCUIT DIAGRAM

GENERAL TOLERANCE	PROJECTION		Description:
X. ±0.50	UNITS	mm	Detector Switch
.X ±0.25	SCALE	1:1	
.XX ±0.10	Draw by:	Jenny	
ANGLE TOLERANCE	Check by:		KLS P/N: L-KLS7-ID-1123
X. ±5°	Date	2018-03-01	NingBo KLS ELECTRONIC CO.,LTD.
.X ±3°	SHEET	1 OF 1	
.XX ±2°			