

1 2 3 4 5 6 7 8

A

B

C

D

E

F

G

H

A

B

C

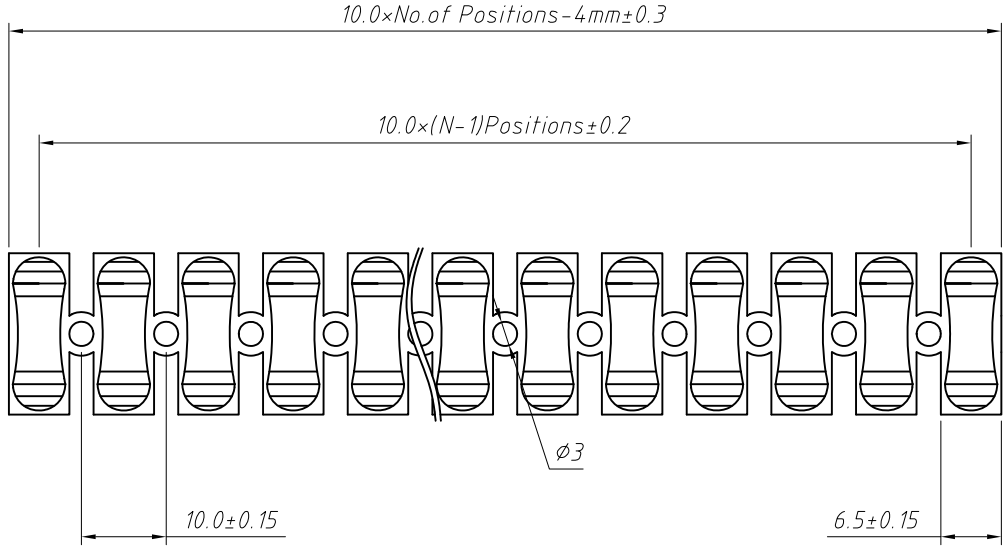
D

E

F

G

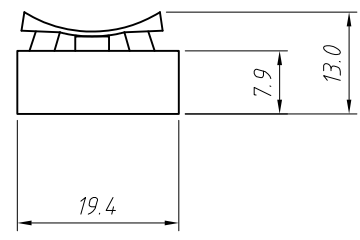
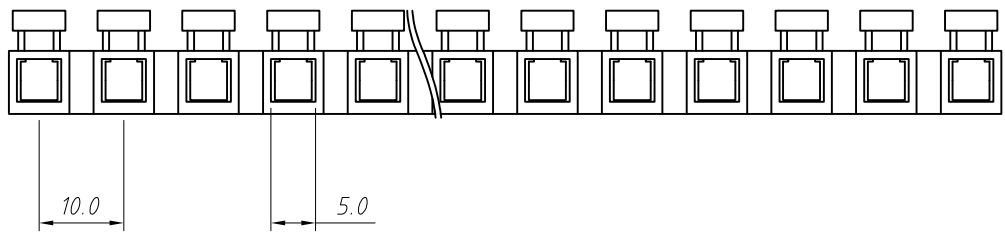
H



Electrical :
 Rated Voltage: 250V
 Rated Current: 10A
 Wiring Capacity: 0.5-2.5mm²

Materials
 Insulation Materials: PP, Flame Retardant, White
 Contact: Mn steel

Number of poles: 2~12 poles
 Strip length: 7mm
 Operating Temperature: 105°C



Order Information

L-KLS2-238ES-XXP-9
 Color code: 9-White
 Poles: 2~12 Poles
 Push wire Connector
 RoHS

GENERAL TOLERANCE	PROJECTION		Description:
.X ±0.50	UNITS	mm	Push wire Connector
.X ±0.25	SCALE	1:1	
.XX ±0.10	Draw by:	Jenny	
ANGLE TOLERANCE	Check by:		KLS P/N: L-KLS2-238ES-XXP-9
.X ±5°	Date	2018-03-01	NingBo KLS ELECTRONIC CO.,L TD.
.X ±3°	SHEET	1 OF 1	
.XX ±2°			

1 2 3 4 5 6 7 8