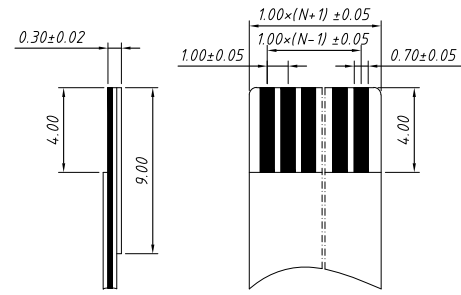
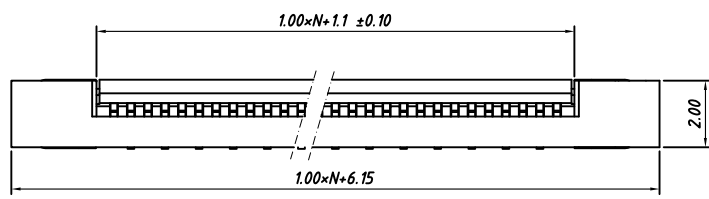


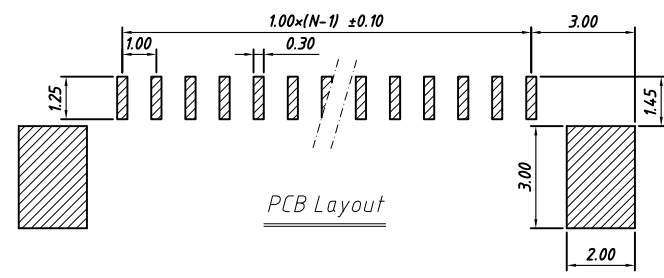
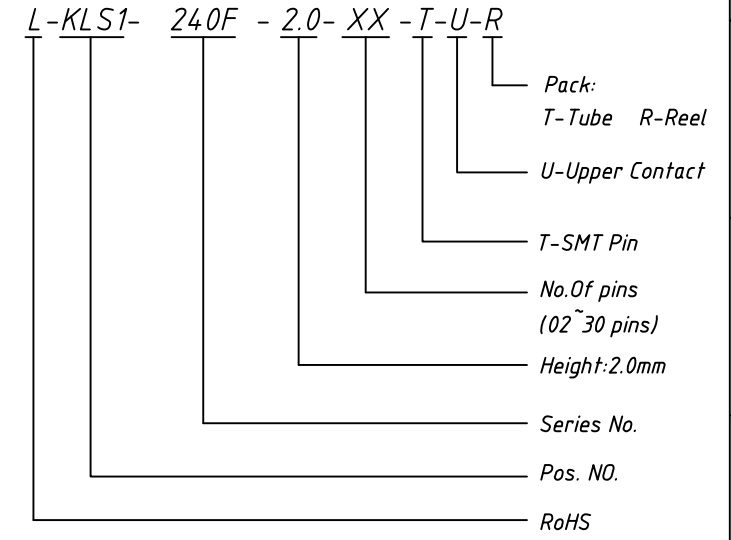
Material
 Housing: LCP UL94V-0
 Lock: LCP UL94V-0
 Plug spring: Phosphor Bronze, Gold/Tin
 Soldering: Phosphor Bronze, Gold/Tin

Electrical
 Voltage rating: 50 V
 Current rating: 0.4 A
 Withstanding Voltage: 500 V
 Insulation resistance: 500MΩ.Min.
 Contact resistance: 20 mΩ.max.

Mechanical
 Temp. Range: -25 °C ~ +85 °C



Order Information



GENERAL TOLERANCE		ANGLE TOLERANCE		PROJECTION		Description:	
X	±0.15	X	±5°	UNITS	mm	CONN FFC 1.00mm, SMD,Horizontal,Upper Contact ,with ZIF L-KLS1-240F-2.0-XX-T-U-R	
.X	±0.03	.X	±3°	SHEET SIZE	A4		
.XX	±0.05	.XX	±2°	KLS P/N:			

Draw by: Date	2018-03-10
Check by: Date	2018-03-10
SCALE	SHEET OF

1 2 3 4 5 6 7 8

A

B

C

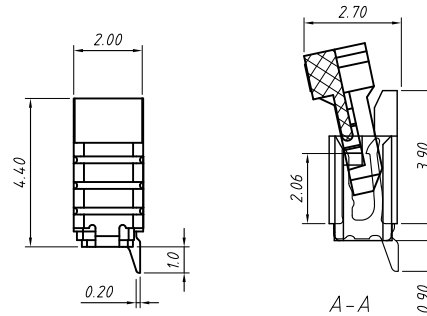
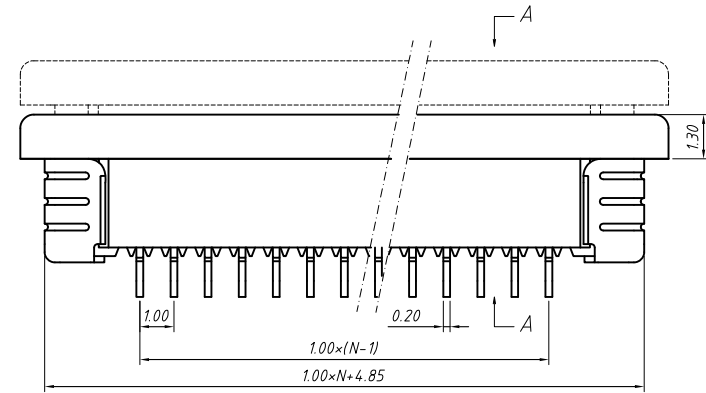
D

E

F

G

H



Material

Housing: LCP UL94V-0

Lock: LCP UL94V-0

Plug spring: Phosphor Bronze, Gold/Tin

Soldering: Phosphor Bronze, Gold/Tin

Electrical

Voltage rating: 50 V

Current rating: 0.4 A

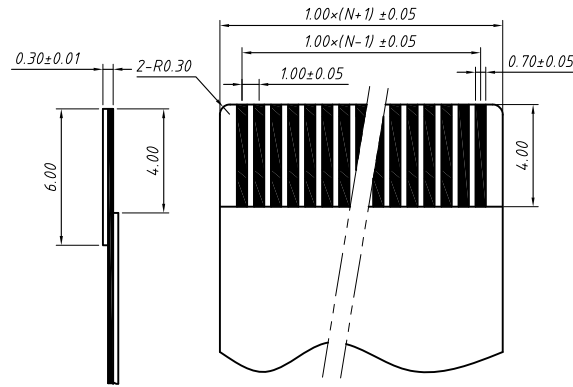
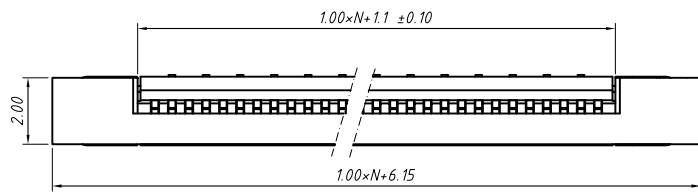
Withstanding Voltage: 500 V

Insulation resistance: 500MΩ.Min.

Contact resistance: 20 mΩ.max.

Mechanical

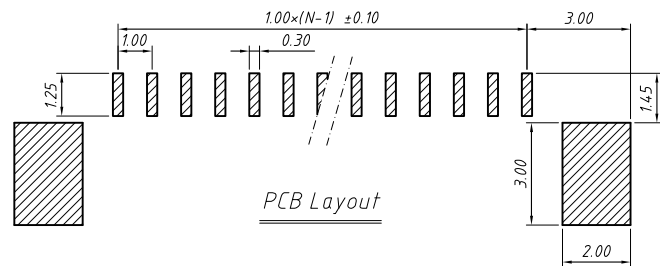
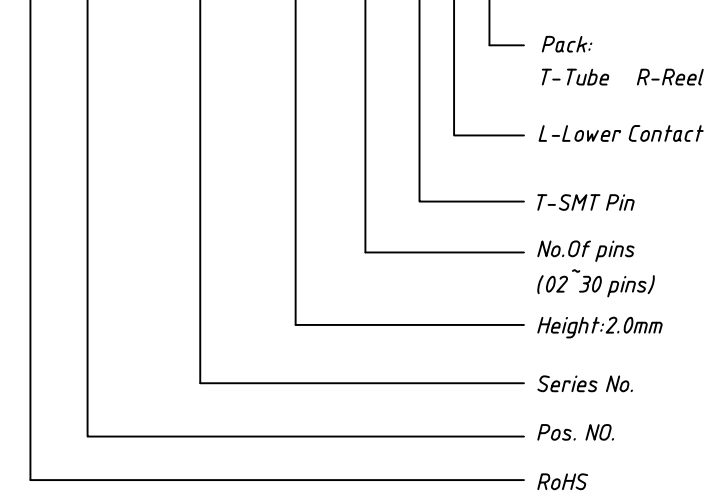
Temp. Range: -25 °C ~ +85 °C



Proper Cable

Order Information

L-KLS1- 240G - 2.0- XX -T-L-R



PCB Layout

GENERAL TOLERANCE	ANGLE TOLERANCE	PROJECTION	Description:
X. ±0.15	X. ±5°	UNITS	CONN FFC 1.00mm, SMD,Horizontal,Lower Contact , with ZIF
.X ±0.03	.X ±3°	SHEET SIZE	
.XX ±0.05	.XX ±2°	KLS P/N:	

Draw by: Date	2018-03-10
Check by: Date	2018-03-10
SCALE	SHEET OF



NingBo KLS ELECTRONIC CO.,LTD.

1 2 3 4 5 6 7 8