

1 2 3 4 5 6 7 8

A A

B B

C C

D D

E E

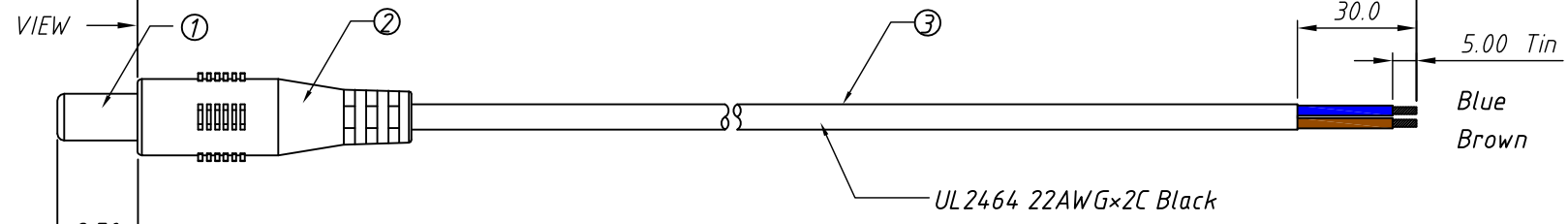
F F

G G

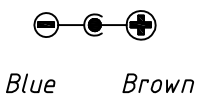
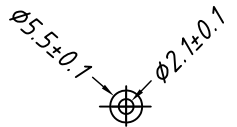
H H

RoHS Compliant

$L \pm 30mm$



Front VIEW



Order Information

L-KLS17-ARY001- 22 B 1000

L: RoHS  
 ARY001: 5.5x2.1x9.5 DC Male-Tin  
 22: UL2464 22AWGx2C  
 B: Color: B- Black W- White  
 1000: Length 1000=1000mm  
 1500=1500mm

Note  
 1:Open/Short Text 100% Text.  
 2:Text Volts/insulation: DC 5V / 500KΩ  
 3: All must be meet on RoHS Compliant

|      |             |                          |      |      |
|------|-------------|--------------------------|------|------|
| 3    | Cable       | UL2464-22AWGx2C,Black    | mm   | L    |
| 2    | PVC molding | PVC,BLACK                | g    | xx   |
| 1    | Connector   | 5.5x2.1x9.5 DC Male PLUG | PCS  | 1    |
| ITEM | PART NAME   | Description              | UNIT | Q'TY |

|              |            |                                     |                        |
|--------------|------------|-------------------------------------|------------------------|
|              |            | Description:                        |                        |
|              |            | 5.5x2.1x9.5mm To Tin, DC Male Cable |                        |
| PROJECTION   |            | KLS P/N:                            | L-KLS17-ARY001-22BXXXX |
| UNITS        | mm         |                                     |                        |
| SHEET SIZE   | A4         |                                     |                        |
| Draw:Daniel  | 2018-05-10 | NingBo KLS ELECTRONIC CO.,L TD.     |                        |
| Check:Daniel | 2018-05-17 |                                     |                        |

1 2 3 4 5 6 7 8