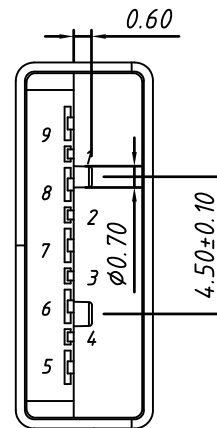
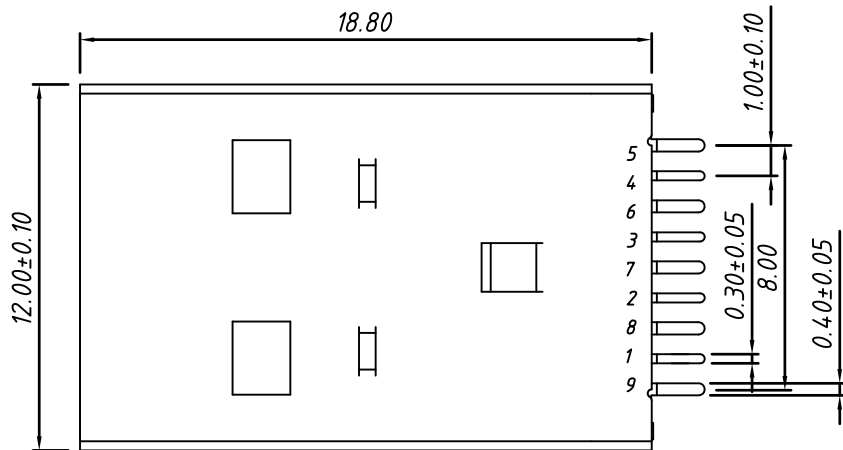


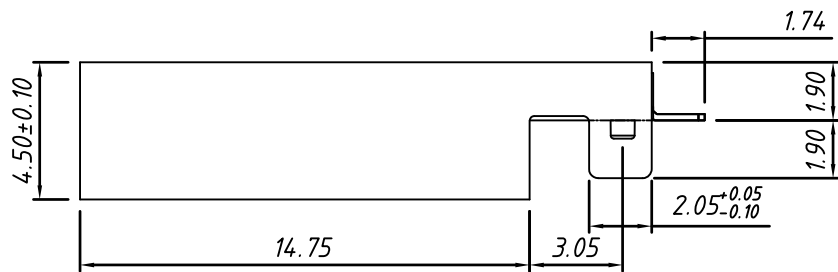
1 RoHS Compliant



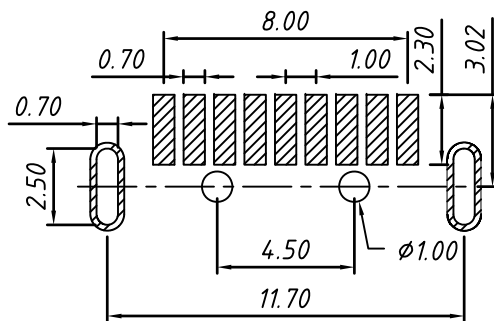
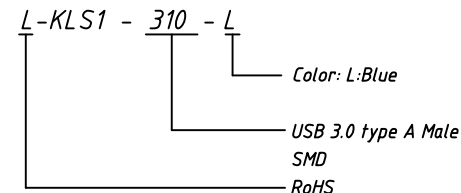
**Material**  
 Housing: Thermoplastic  
 Contacts: copper  
 Pin Plated: Gold 3u" over 50u" nickel  
 Shell: Spcc,Nickel plated

**Electrical**  
 Contact Current Rating: 1.5 A  
 Withstanding Voltage:500VAC(Rms)  
 Contact Resistance: 30m $\Omega$  Max  
 Insulation Resistance:1000M $\Omega$  Min

**Mechanical**  
 Operating Temperature:-30°C TO +80°C.



**Order Information**



P.C.B. LAYOUT

GENERAL TOLERANCE	PROJECTION		Description:
X. $\pm 0.50$	UNITS	mm	USB 3.0
.X $\pm 0.25$	SCALE	1:1	Type A Male CONN, SMD
.XX $\pm 0.10$	Draw by:	Daniel	KLS P/N: KLS1-310
ANGLE TOLERANCE	Check by:	Daniel	NingBo KLS ELECTRONIC CO.,L TD.
X. $\pm 5^\circ$	Date	2018-03-01	
.X $\pm 3^\circ$	SHEET	1 OF 1	
.XX $\pm 2^\circ$			