

Material
 Pin header: Brass, Tin plated
 Housing: PA66, UL 94V-0

Electrical
 Rated voltage: 300V
 Rated current: 15A
 Contact Resistance: 20 mΩ
 Insulation resistance: 500MΩ/DC500V
 Withstand voltage: AC2000V / 1 min


Mechanical
 Temp. Range: -40 °C ~ +105 °C
 Soldering: 250°C 5Sec. Max.

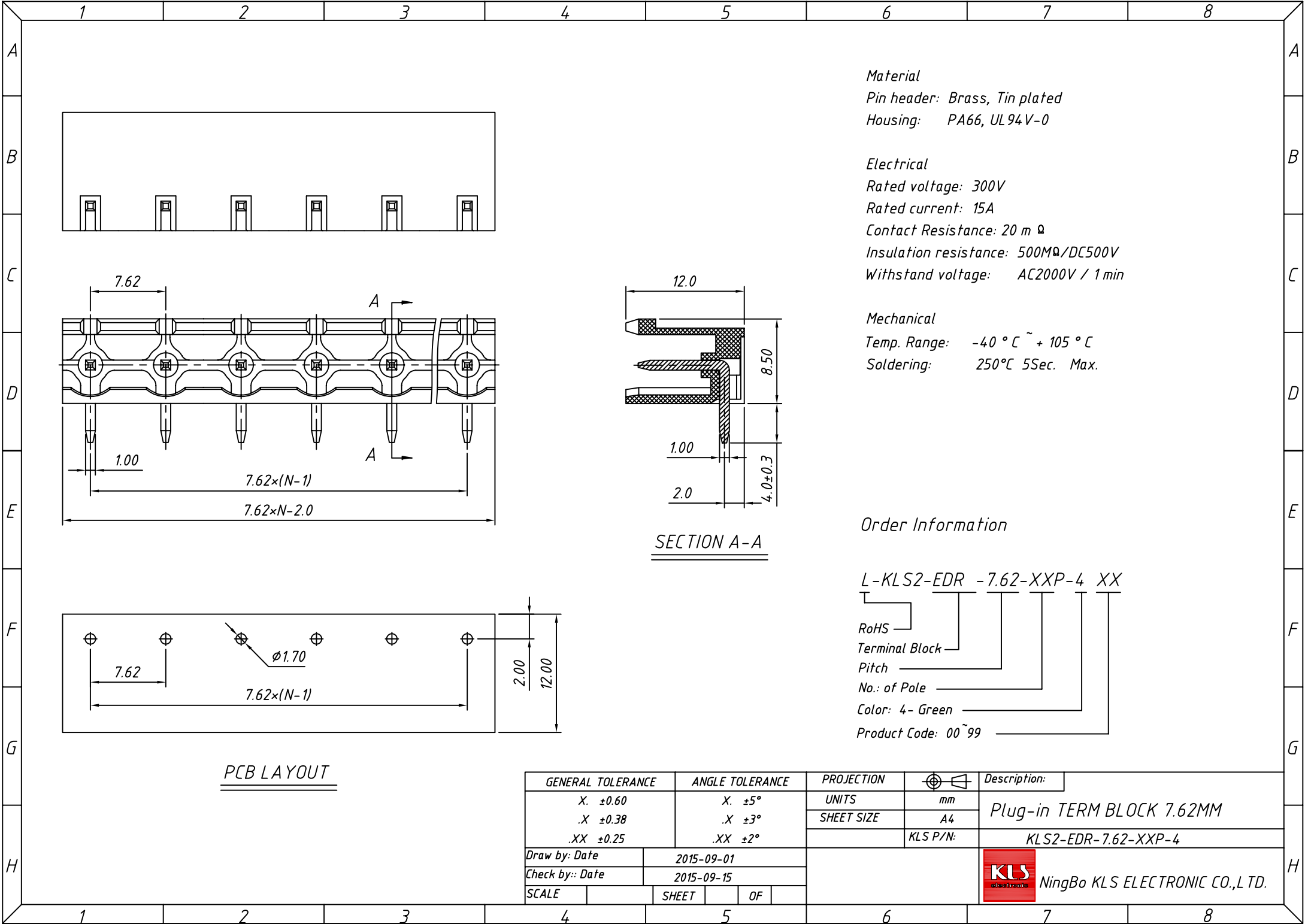
Order Information

L-KLS2-EDR -7.50-XXP-4 XX

RoHS
 Terminal Block
 Pitch
 No.: of Pole
 Color: 4- Green
 Product Code: 00~99

PCB LAYOUT

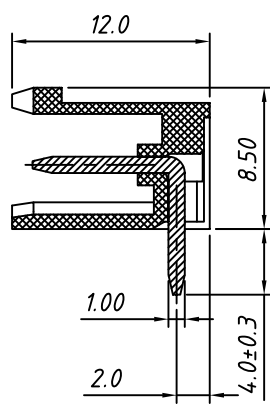
| GENERAL TOLERANCE | | ANGLE TOLERANCE | | PROJECTION | Description: |
|-------------------|-------|-----------------|-----|---|---------------------|
| X | ±0.60 | X | ±5° | UNITS | mm |
| .X | ±0.38 | .X | ±3° | SHEET SIZE | A4 |
| .XX | ±0.25 | .XX | ±2° | KLS P/N: | KLS2-EDR-7.50-XXP-4 |
| Draw by: Date | | 2015-09-01 | |  NingBo KLS ELECTRONIC CO.,L TD. | |
| Check by: Date | | 2015-09-15 | | | |
| SCALE | | SHEET | OF | | |



Material
 Pin header: Brass, Tin plated
 Housing: PA66, UL 94V-0

Electrical
 Rated voltage: 300V
 Rated current: 15A
 Contact Resistance: 20 mΩ
 Insulation resistance: 500MΩ/DC500V
 Withstand voltage: AC2000V / 1 min

Mechanical
 Temp. Range: -40 °C ~ +105 °C
 Soldering: 250°C 5Sec. Max.

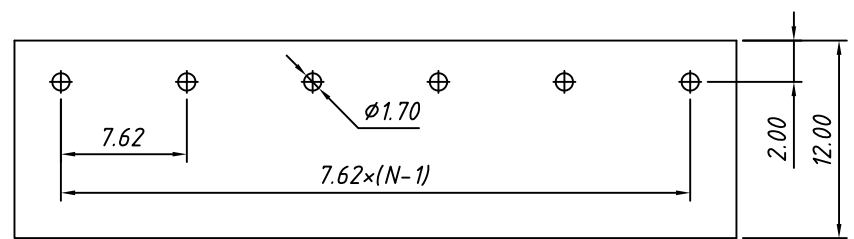
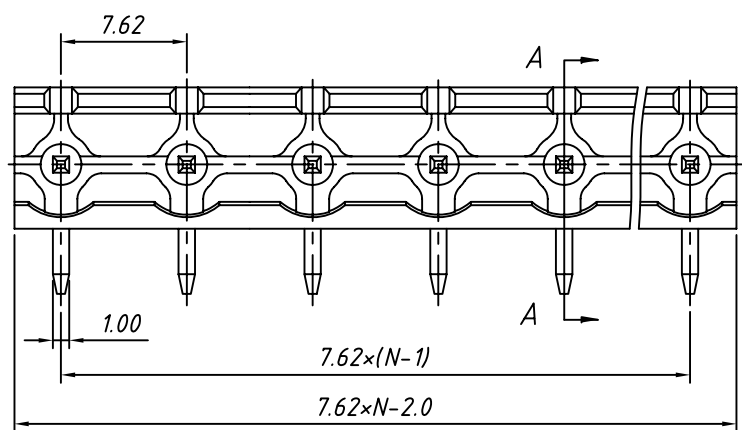
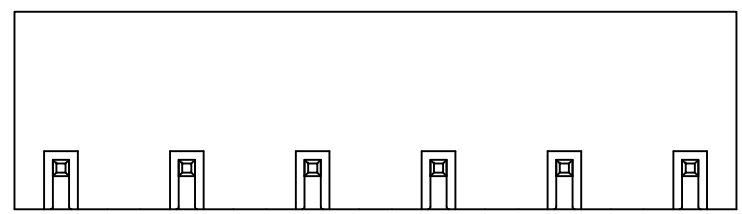


SECTION A-A


Order Information

L-KLS2-EDR - 7.62-XXP-4 XX

RoHS
 Terminal Block
 Pitch
 No.: of Pole
 Color: 4- Green
 Product Code: 00~99



PCB LAYOUT

| GENERAL TOLERANCE | | ANGLE TOLERANCE | | PROJECTION | Description: |
|-------------------|----------|-----------------|--------|---|---|
| .X ±0.60 | .X ±0.38 | .X ±5° | .X ±3° | UNITS | Plug-in TERM BLOCK 7.62MM KLS P/N: KLS2-EDR-7.62-XXP-4 |
| .XX ±0.25 | .XX ±2° | mm | | SHEET SIZE | |
| | | A4 | | | |
| Draw by: Date | | 2015-09-01 | |  NingBo KLS ELECTRONIC CO.,L TD. | |
| Check by: Date | | 2015-09-15 | | | |
| SCALE | | SHEET | OF | | |