

Electrical Characteristics

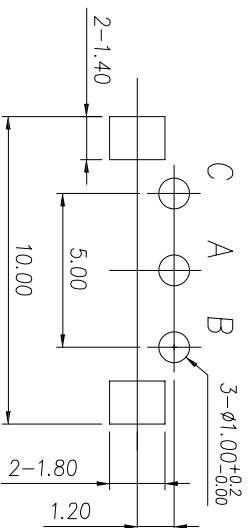
Rated Power: DCSV 5mA Max.
 Output signal: A \ B 2signals
 Resolution: 12 Pulses 360°
 24 Pulses 360°
 Phase difference: 4ms Min.
 Sliding noise: 7ms Max.
 Contact Resistance: 1Ω Max.
 Insulation resistance: 1000MΩ Min. at DC 250V
 Withstand voltage: AC300V / 1min

Mechanical

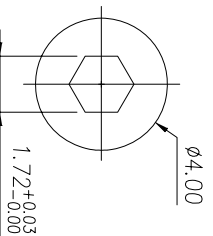
Total rotation angle: 360°
 Rotational Torque: 30~200 gf·cm Max
 Number of Detents: 24 detents Step angle: 15°±2°
 12 detents Step angle: 30°±2°
 Rotational Life: 10000±200 cycles
 Temp. Range: -10 ° C ~ +70 ° C
 230±5 ° C 5Sec. Max.
 Soldering:

Order Information:
 L-KLS4-EC1002 - XX

RoHS:
 10mm Encoder
 Pulse and Detent Code
 9A: 12 Pulse with 24 Detents
 9B: 12 Pulse without Detent



PCB LAYOUT



Type of shaft

GENERAL TOLERANCE	ANGLE TOLERANCE	PROJECTION	Description:
X: ±0.50	X: ±5°		10mm Encoder
.X: ±0.38	.X: ±3°		
.XX: ±0.25	.XX: ±2°		
Draw by: Date	2017-09-01	KLS P/N: KLS4-EC1002-XX	
Check by: Date	2017-09-05		
SCALE	SHEET	OF	

KLS ELECTRONIC CO., LTD.