

SPECIFICATION:

Circuit: Push (ON)

Current Rating: 30mA

Voltage Rating: 30V DC

Dielectric Strength: 500VAC / 1 minute

Contact Resistance: 100mΩ Max.

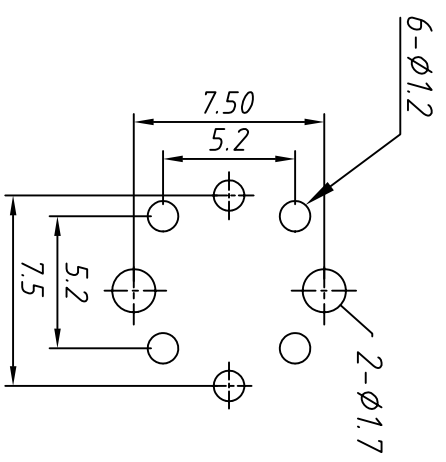
Operating Force: 200±50gf

Total Travel: 0.7±0.2mm

Life: 100,000 cycles Min.

Operating temperature: +10°C~+60°C

| Cap Color | | | | |
|-----------|-----|--------|-------|-------|
| CODE : | R | Y | G | B |
| Color: | Red | Yellow | Green | Black |
| | | | | Blue |



PCB LAYOUT

| | | | | | | |
|-----------------|-----|-------|-----------|----|--------------|------------------------|
| GENERAL | X | +0.30 | UNITS: | mm | Description: | 12mm Reset Tact Switch |
| TOLERANCE | .XX | +0.15 | Size: | A4 | Item code: | KLST-TSS1202-X |
| ANGLE TOLERANCE | | ±1° | Draw by: | | | |
| PROJECTION | | | Check by: | | | |

KLS ELECTRONIC CO., LTD.