

Jack with Transformer Series

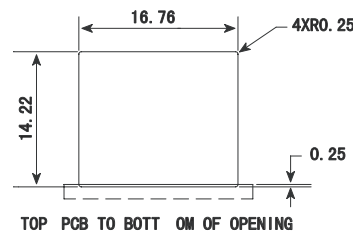
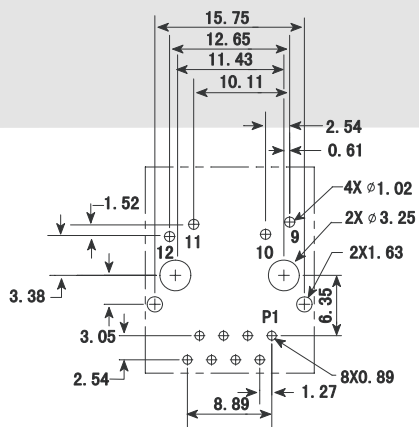
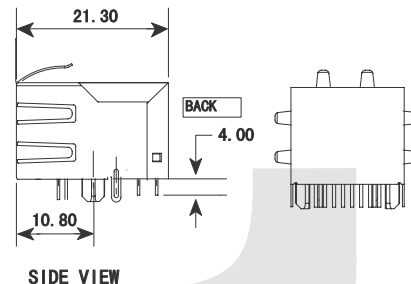
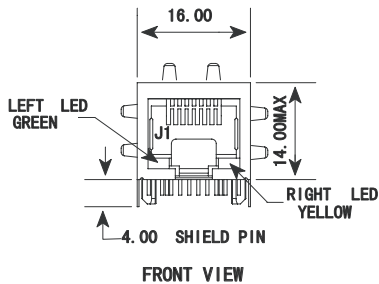
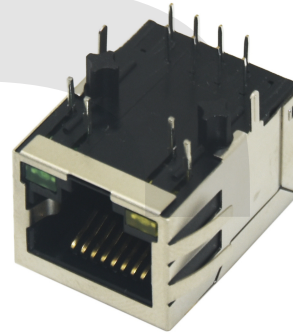
KLS12-TL002 Jack with Transformer Series 1x1 Ports

MATERIAL

- 1.Housing Material: Glass Filled Polyester UL94V-0 PBT, Nylon
- 2.Housing Color: Black or others
- 3.Contact Material: Phosphor Bronze
- 4.Plating: Gold plating over nickel. Gold plating thickness
1.5u"/ 3u"/ 6u"/ 15u"/ 30u"/ 50u"
- 5.Shield: 0.23 Thickness Brass with nickel plated

ELECTRICAL

- 1.Current Rating: 1.5 Amp
- 2.Voltage Rating: 125VAC
- 3.Contact Resistance: 30 MΩ Max.
- 4.Insulation Resistance: 500 MΩ Min. @ 500 VDC
- 5.Withstanding Voltage: 1000VAC RMS 50Hz 1 minute



ORDER INFORMATION

KLS12-TL002 - 1x1 - G/Y - 1 - XX

| Part Number | Ports | LED Style | Back Peg | Gold Plating |
|-------------|---|--|---|--|
| | 1x1-1 Ports 1x2-2 Ports 1x4-4 Ports | G/Y-Green / Yellow Y/G-Yellow / Green R/G-Red / Green G/R-Green / Red G/G-Green / Green Y/Y -Yellow / Yellow 0-Without LED | 1-Back Peg 3.05 2-Front Peg 3.05 3-Front Peg 3.68 | 01-Fu" 02-3u" 03-6u" 04-15u" 05-30u" 06-50u |

Jack with Transformer Series

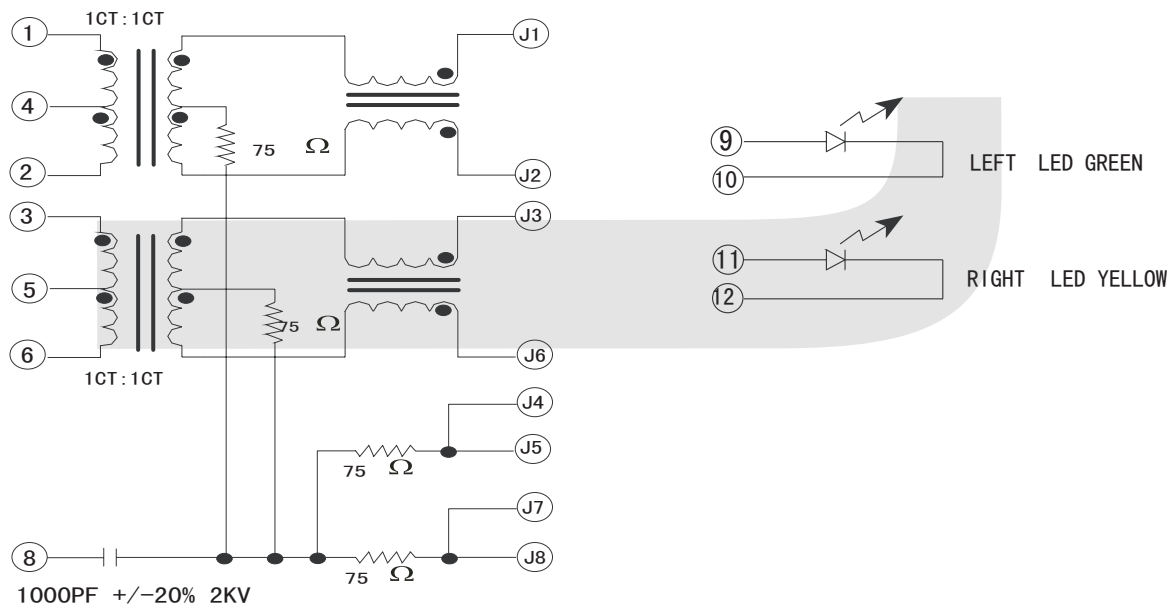
KLS12-TL002 Jack with Transformer Series 1x1 Ports

Characteristics Description:

1. RJ45 10/100 Base-Tx Transformer Jack With Transformer Impedance Resistor/High Voltage Capacitor.
2. Size Same As RJ-45 Modular Jack To Save PCB Space.
3. Reduce EMI Radiation, Improve EMI Performance.
4. Designed For Network Interface Card Application.
5. Designed To Meet IEEE 802.3u Requirement.
6. Designed For 100 Base Transmission Over UTP-5 Cable.

Electrical Characteristics:

- 1.Insertion Loss: 100KHz-100MHz -1.0dB Max.
- 2.Return Loss: 1-30MHz -18dB Min.
40-50MHz -15dB Min.
60-80MHz -10dB Min.
- 3.Cross Talk : 100KHz-100MHz -35dB Typ.
- 4.CMRR: 100KHz-100MHz -38dB Typ.
- 5.Turn Ratios: RX=1:1(+/-3%) TX=1:1(+/-3%)
- 6.Isolation 60Hz: Input To Output 1500Vrms,60 Seconds
- 7.Primary Inductance: @100KHz 0.1Vrms,8mA DC Bias 350uH Min.



ORDER INFORMATION

KLS12-TL002 - 1x1 - G/Y - 1 - XX

| Part Number | Ports | LED Style | Back Peg | Gold Plating |
|-------------|---|--|---|--|
| | 1x1-1 Ports 1x2-2 Ports 1x4-4 Ports | G/Y-Green / Yellow Y/G-Yellow / Green R/G-Red / Green G/R-Green / Red G/G-Green / Green Y/Y -Yellow / Yellow 0-Without LED | 1-Back Peg 3.05 2-Front Peg 3.05 3-Front Peg 3.68 | 01-Fu" 02-3u" 03-6u" 04-15u" 05-30u" 06-50u |