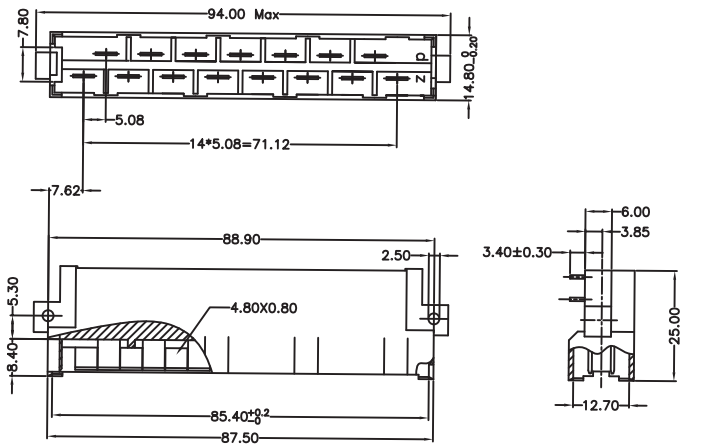
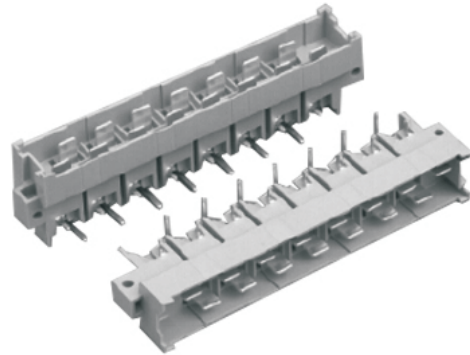


DIN41612 Connectors

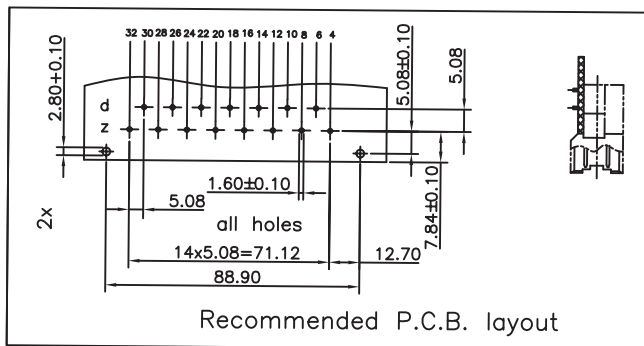
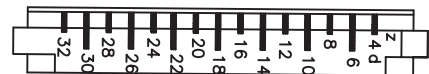
KLS1-125-4-159-20-30 Right Angle Male Type H15 Connectors

Parameter:

Technical Data:EURO DIN 41612: Signal
 Housing: PBT & 30%Class Fiber(UL94V-0)
 Contact: Male:Brass
 Female:Phosphor Bronze
 Operating temperature: -55°C~+105°C
 Contact resistance:8m(ohm) max.
 Insulator resistance:1000M(ohm)min.
 Current rating: 15AMP
 Withstanding voltage:AC 3100V for 1 minute
 Insertion force: 90N Max.
 Withdrawal force:0.2N/Pin min
 Contact Rating: Ag/Ni,Plating



Contact arrangement
View from termination side



ORDER INFORMATION

Product NO.: KLS1-125-4-159-20-30

Pos. NO. ————