

Push Button Switches

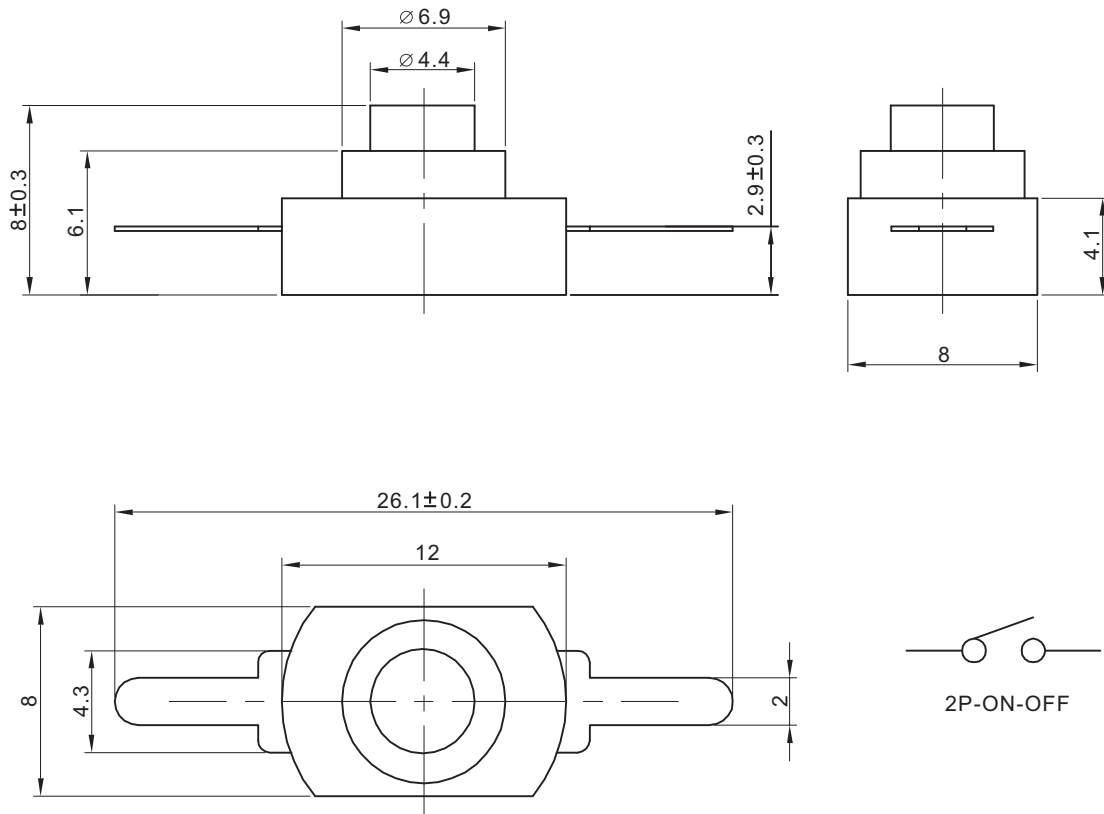
KLS7-KAN8-001G Push Button Switches

Electrical:

1. Rated load: 1A 250V AC
2. Contact Resistance: $\leq 50\text{m}\Omega$
3. Insulation Resistance: $\geq 100\text{M}\Omega$
4. Withstand Voltage: 500V AC 1minute
5. Actuating Force: $750\text{g} \pm 50\text{g}$
6. Electrically Life: ≥ 50000 cycles
7. Environment temperature: $-40^{\circ}\text{C} \sim +70^{\circ}\text{C}$

Materials:

1. Base: POM
2. Cover: POM
3. Upper teeth: POM
4. Bottom teeth: POM
5. The needle: H62 brass band $Y = 0.2\text{mm}$
6. Contact: H62 brass band $Y = 0.2\text{mm}$



ORDER INFORMATION

Product NO.: KLS7-KAN8-001G

