

HF115F-I

MINIATURE HIGH POWER RELAY



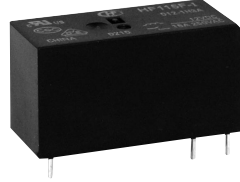
File No.:E134517



File No.:116934



File No.:CQC08002028130



Features

- Max high inrush:120A 20ms
- Low height: 15.7 mm
- 5kV dielectric strength (between coil and contacts)
- Creepage distance: 10mm
- Meeting VDE 0700, 0631 reinforce insulation
- Product in accordance to IEC 60335-1 available
- Sockets available
- Plastic sealed and flux proofed types available
- UL insulation system: Class F
- Environmental friendly product (RoHS compliant)
- Outline Dimensions: (29.0 x 12.7 x 15.7) mm

CONTACT DATA

Contact arrangement	1A, 1C
Contact resistance	100mΩ max.(at 1A 6VDC)
Contact material	AgSnO ₂
Contact rating	16A 250VAC
Inrush rating	NO: TV-5 120VAC
Max. switching voltage	440VAC / 300VDC
Max. switching current	16A
Max. switching power	4000VA
Mechanical endurance	1 x 10 ⁷ OPS
Electrical endurance	1H3A type: 7.5 x 10 ⁴ OPS (16A 250VAC, General use, Room temp., 1s on 9s off)
	1H3A type: 2.5 x 10 ⁴ OPS (TV-5 120VAC, Room temp., 1s on 59s off)

COIL

Coil power	Approx. 400mW
------------	---------------

COIL DATA

at 23°C

Nominal Voltage VDC	Pick-up Voltage VDC max.	Drop-out Voltage VDC min.	Max. Voltage VDC ¹⁾	Coil Resistance Ω
5	3.50	0.5	7.5	62 x (1±10%)
6	4.20	0.6	9.0	90 x (1±10%)
9	6.30	0.9	13.5	202 x (1±10%)
12	8.40	1.2	18	360 x (1±10%)
18	12.6	1.8	27	810 x (1±10%)
24	16.8	2.4	36	1440 x (1±10%)
48 ²⁾	33.6	4.8	72	5760 x (1±15%)
60 ²⁾	42.0	6.0	90	7500 x (1±15%)
110 ²⁾	77.0	11.0	165	25200 x (1±15%)

Notes: 1) Maximum voltage refers to the maximum voltage which relay coil could endure in a short period of time.

2) For products with rated voltage ≥ 48V, measures should be taken to prevent coil overvoltage in order to protect coil in test and application (eg. Connect diodes in parallel).

CHARACTERISTICS

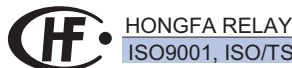
Insulation resistance	1000MΩ (at 500VDC)	
Dielectric strength	Between coil & contacts	5000VAC 1min
	Between open contacts	1000VAC 1min
Surge voltage (between coil & contacts)	10kV (1.2 / 50μs)	
Operate time (at nomi. volt.)	15ms max.	
Release time (at nomi. volt.)	8ms max.	
Temperature rise (at nomi. volt.)	55K max.	
Shock resistance *	Functional	98m/s ²
	Destructive	980m/s ²
Vibration resistance *	10Hz to 150Hz 20g/5g	
Humidity	5% to 85% RH	
Ambient temperature	-40°C to 85°C	
Termination	PCB	
Unit weight	Approx. 13.5g	
Construction	Plastic sealed, Flux proofed	

Notes: 1) The data shown above are initial values.
2) * Index is not that of relay length direction.

SAFETY APPROVAL RATINGS

UL/CUL	HF115F-I....1Z(S)3A	NO: 16A 250VAC at 85°C
	HF115F-I....1H(S)3A	16A 250VAC TV-5,120VAC
VDE	HF115F-I....1H(S)3A	16A 250VAC at 85°C
	HF115F-I....1Z(S)3A	NO: 16A 250VAC at 85°C

Notes: 1) All values unspecified are at room temperature.
2) Only typical loads are listed above. Other load specifications can be available upon request.



ISO9001, ISO/TS16949, ISO14001, OHSAS18001, IECQ QC 080000 CERTIFIED

2014 Rev. 1.02

ORDERING INFORMATION

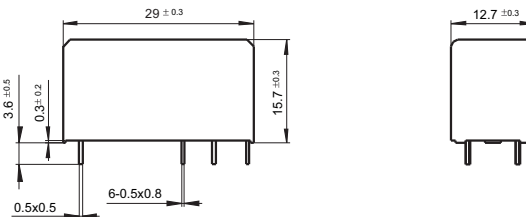
Type		HF115F-I / 012		-1H	S	3	A	(XXX)
Coil voltage	5, 6, 9, 12, 18, 24, 48, 60, 110VDC							
Contact arrangement	1H: 1 Form A		1Z: 1 Form C					
Construction ¹⁾²⁾	S: Plastic sealed		Nil: Flux proofed					
Version	3: 5.0mm							
Contact material	A: AgSnO ₂							
Customer special code	e.g. (335) stands for product in accordance to IEC 60335-1 (GWT)							

- Notes:** 1) We recommend flux proofed types for a clean environment (free from contaminations like H₂S, SO₂, NO₂, dust, etc.). We suggest to choose plastic sealed types and validate it in real application for an unclean environment (with contaminations like H₂S, SO₂, NO₂, dust, etc.).
- 2) Contact is recommended for suitable condition and specifications if water cleaning or surface process is involved in assembling relays on PCB.

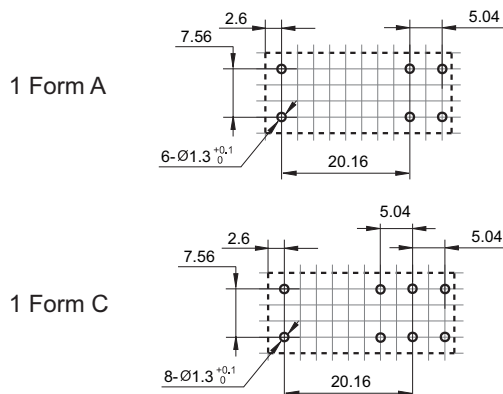
OUTLINE DIMENSIONS, WIRING DIAGRAM AND PC BOARD LAYOUT

Unit: mm

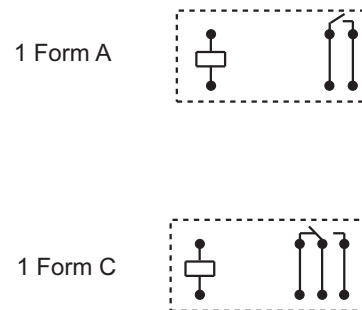
Outline Dimensions



PCB Layout (Bottom view)



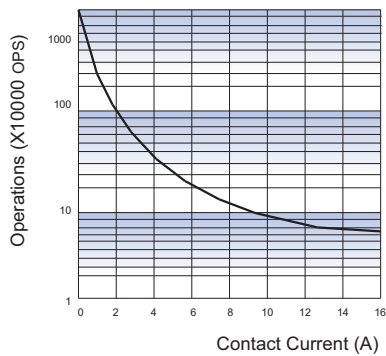
Wiring Diagram (Bottom view)



- Remark: 1) In case of no tolerance shown in outline dimension: outline dimension ≤ 1 mm, tolerance should be ± 0.2 mm; outline dimension > 1 mm and ≤ 5 mm, tolerance should be ± 0.3 mm; outline dimension > 5 mm, tolerance should be ± 0.4 mm.
- 2) The tolerance without indicating for PCB layout is always ± 0.1 mm.
- 3) The width of the gridding is 2.52mm.

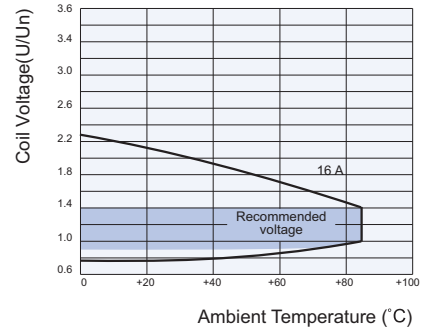
CHARACTERISTIC CURVES

ENDURANCE CURVE



Test conditions:
 NO, 250VAC, Resistance Load,
 Flux proofed, Room temp., 1s on 9s off

COIL OPERATING RANGE (DC) *



Notes: * The use of a relay with an energising voltage other than the rated coil voltage may lead to reduced electrical life. An energising voltage over the abver range may damage the insulation of relay coil.

Disclaimer

The specification is for reference only. See to "Terminology and Guidelines" for more information. Specifications subject to change without notice. We could not evaluate all the performance and all the parameters for every possible application. Thus the user should be in a right position to choose the suitable product for their own application. If there is any query, please contact Hongfa for the technical service. However, it is the user's responsibility to determine which product should be used only.