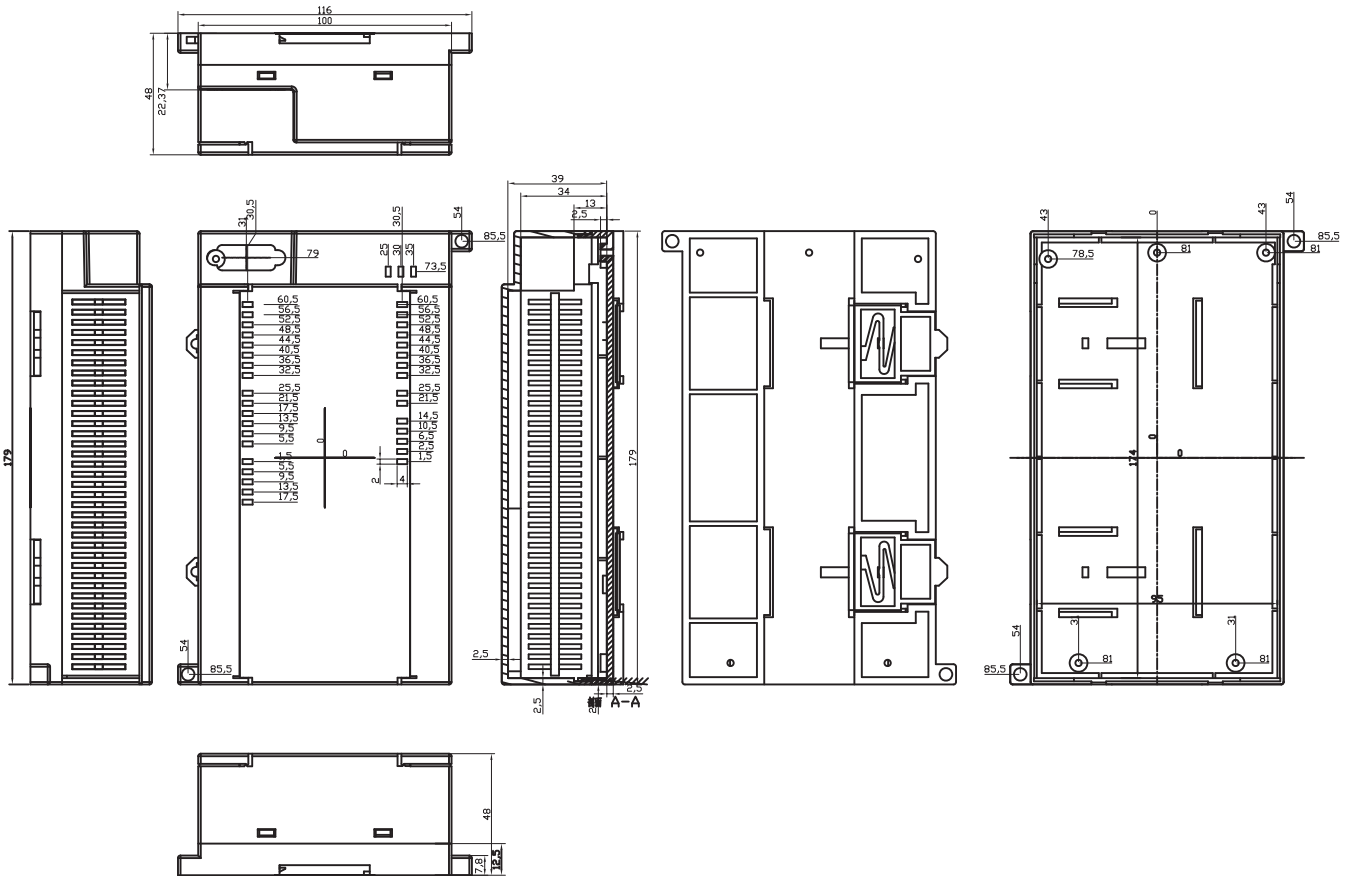
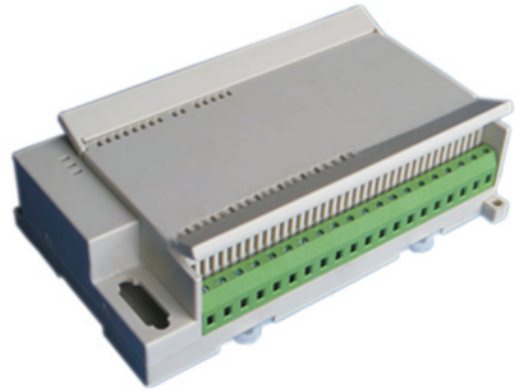


## PLC housing

KLS24-JG3-21 179\*100\*48mm PLC housing, gray

### Product Description:

- \*Product Material: ABS
- \*Widely used in various PLC module circuit, a controller unit, with electrical module
- \*Product Standard accessories: cap, base, retainer 2, a long cover 2
- \*Box body with the hook connection, tool-free installation
- \*Product side terminal Optional:
  - (1) 5.08 pitch screw terminals unilateral 30, a total of 60
  - (2) Pitch 7.62 fence-type terminal unilateral 20, a total of 40
- \*Two installation methods:
  - (1) screws
  - (2) fast and simple rail mounting
- \*Fully insulated protection
- \*Good heat dissipation
- \*Product color and material batch can be customized
- \*Product cover may require modification



## ORDER INFORMATION

Product NO.: KLS24-JG3-21

Pos. NO. \_\_\_\_\_ No. \_\_\_\_\_