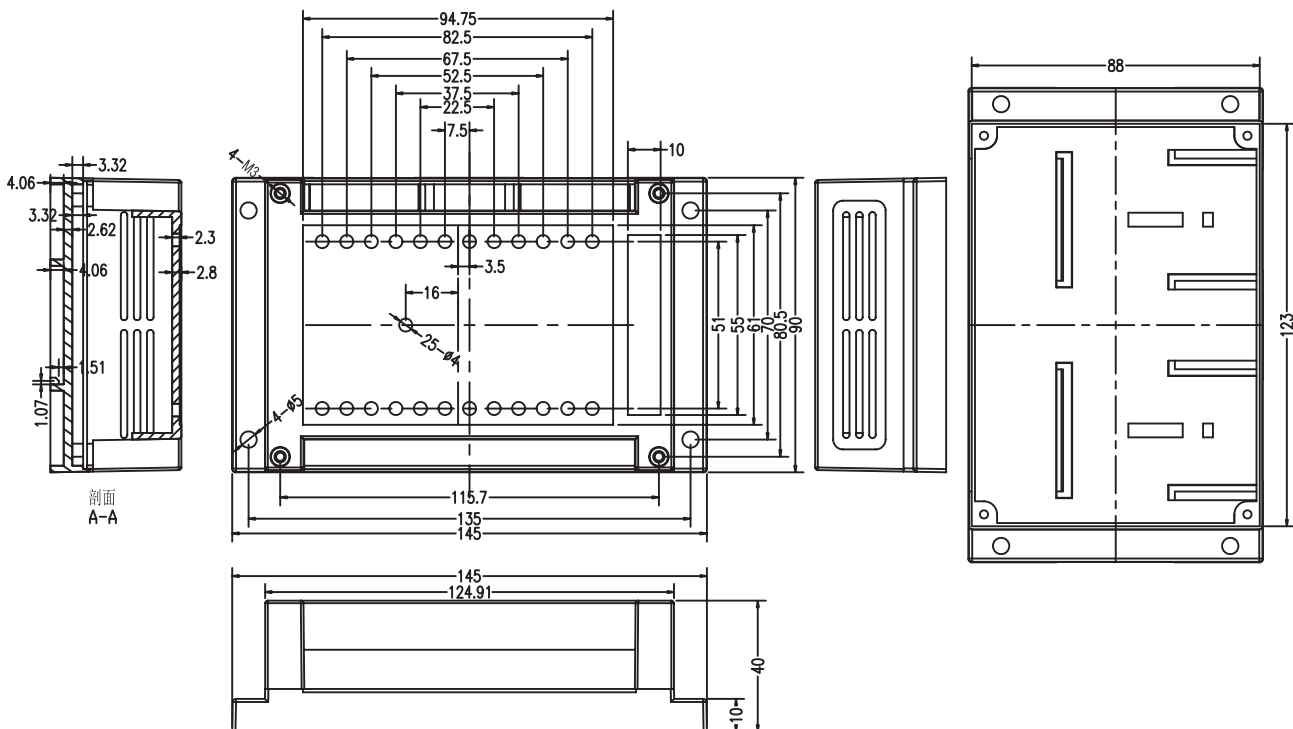
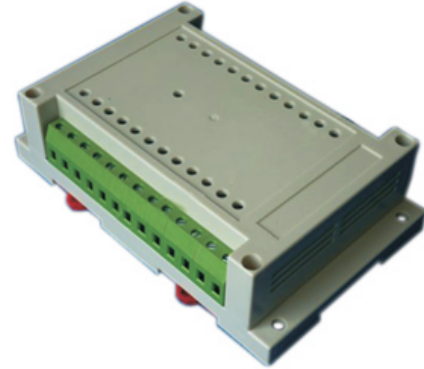


PLC housing

KLS24-JG3-03 145*90*40mm PLC housing, gray

Product Description:

- *Product Material: ABS
- *Widely used in various PLC module circuit, a controller unit, with electrical module
- *Product Standard accessories: cover, base, two retainer, four screws
- *Product side terminal Optional:
 - (1) 5.0 unilateral pitch terminal can be equipped with 20, total 40
 - (2) Pitch 7.62 unilateral terminal can be equipped with 13, total 26
- *Two installation methods:
 - (1) screws
 - (2) fast and simple rail mounting
- *Fully insulated protection
- *Good heat dissipation
- *Product color and material batch can be customized
- *Product cover may require modification



ORDER INFORMATION

Product NO.: KLS24-JG3-03

Pos. NO. _____ No. _____