



Weight: 2.4g (approx.)

Dia 8mm Flat DC Mini Motor

Model No.: KLS23-DBM1-FF-K20VA

1 Typical Applications: Note Book PC
Optical Disk Drive
Epilator

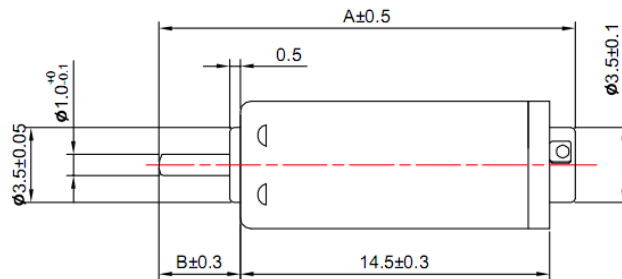
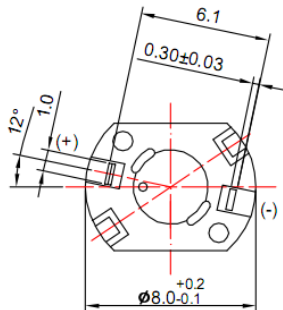
2 KEY FEATURES

- Plastic End Cap
- Stainless Steel Shaft

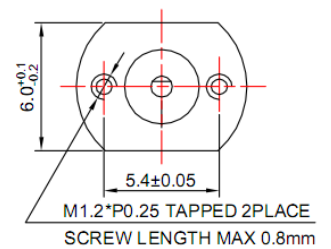
- NdFeB Magnet
- Precious Metal Brush

3 DIMENSIONS(MM)

Customization:
a.Length A, B
b.Technical Data
c.Varistor for option



DIRECTION OF ROTATION
CW/CCW



4 TECHNICAL DATA

MODEL	VOLTAGE		NO LOAD		AT MAXIMUM EFFICIENCY					STALL			
	OPERATING RANGE	NOMINAL	SPEED	CURRENT	SPEED	CURRENT	TORQUE		OUTPUT	TORQUE		CURRENT	
		V	r/min	A	r/min	A	mNm	g.cm	W	mNm	g.cm	A	
FF-K20VA	06205	2.0-3.5	3	11800	0.04	5800	0.1	0.147	1.5	0.07	0.27	2.8	0.16
	07130	2.0-4.0	3.5	23800	0.04	18700	0.15	0.12	1.25	0.25	0.57	5.82	0.56

Remarks

1. All values approximate.
2. Customized electric performance on request by using suitable windings.
3. Available with required cables, eccentric wheel and accessories after evaluation.