



## LS23LX17HD Series

### LX17HD Series Introduction

MOONS' LX17HD series (42mm compact) linear stepping motors open avenues for equipment designers who previously settle for products with inferior performance and endurance.

configurations options :  
Noncaptive / External NUT

Range of Travel Per Step :  
0.00396 (0.00015") ~ 0.04876 (0.00192")



### ■ General Specifications

- Bi-polar

Type	LX17HD401XXX-XX
Rated Current	0.7A
Resistance Per Phase	7.2Ω
Inductance Per Phase	10.5mH
Temperature Rise	75°C
Weight	230g
Rotor Inertia	37g*cm <sup>2</sup>

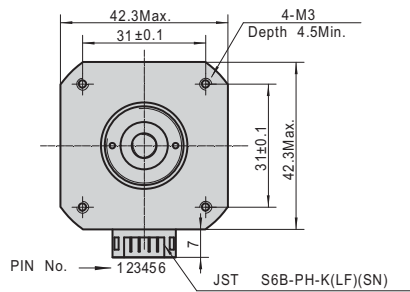
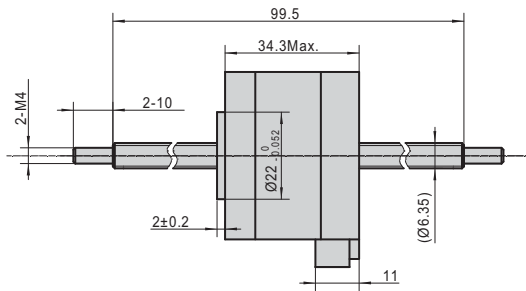
ø6.35				
Lead		Travel Per Step		Order Code
in.	mm	in.	mm	
0.03125	0.79375	0.00015*	0.00396*	031
0.25	6.35	0.00125	0.03175	250

\* Values truncated

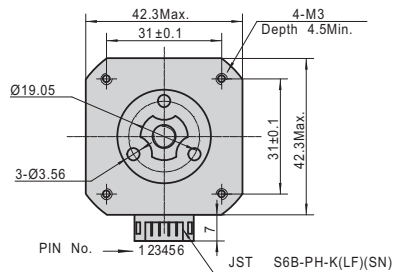
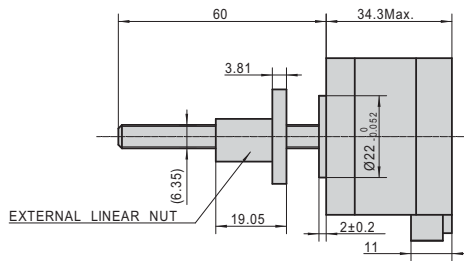


## Mechanical Dimension

### Noncaptive LN17HD4



### External NUT LN17HD4

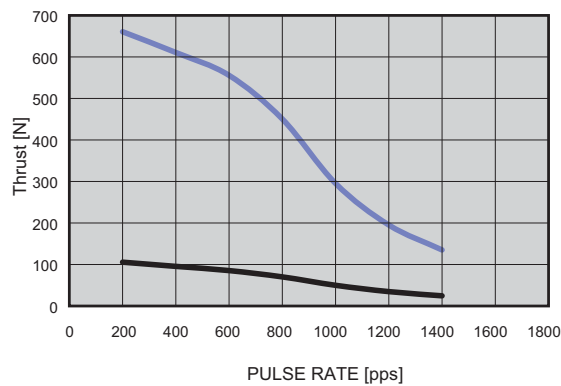


## Performance Curves

### LX17HD401XXX FORCE VS PULSE RATE

Conditions: Bi-polar Constant Current Driver  
 Driver: AMA MS3540M  
 Mode: Full Step

— 031 — 250 — 40V



### LX17HD401XXX FORCE VS LINEAR VELOCITY

Conditions: Bi-polar Constant Current Driver  
 Driver: AMA MS3540M  
 Mode: Full Step

— 031 — 250 — 40V

