

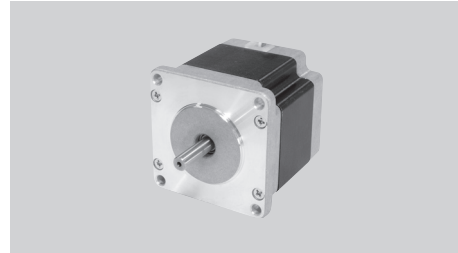


KLS ELECTRONIC CO.,LTD

KLS23-24HC SERIES 1.2°

Key Features

- High Torque
- High Efficiency
- Smooth Movement



General Specifications

- Bi-polar

Series & Length	Model Number	Holding Torque		Rated Current	Resistance per Phase	Inductance per Phase	Detent Torque		Rotor Inertia	
		N.m Typ.	oz-in Typ.	A	ohms ± 10%@20°C	mH Typ.	mN.m	oz-in	g.cm ²	oz-in ²
24HC2 54.5mm (2.15 in.)	ML24HC2P3150-01	0.85	106.4	1.5	4.7	10.5	35	4.96	190	1.05
	ML24HC2P3280-01			2.8	1.4	3				
24HC3 76.5 mm (3.01n.)	ML24HC3P3150-01	1.25	177.4	1.5	4.9	11.6	55	7.79	340	1.87
	ML24HC3P3280-01			2.8	1.4	3.4				
24HC4 45.5 mm (1.79in.)	ML24HC4P3150-01	0.70	99.3	1.5	6.3	9.7	25	3.54	130	0.72
	ML24HC4P3280-01			2.8	1.7	2.75				

General Specifications

- Bi-polar

Series & Length	Model Number	Holding Torque		Rated Current	Resistance per Phase	Inductance per Phase	Detent Torque		Rotor Inertia	
		N.m Typ.	oz-in Typ.	A	ohms ± 10%@20°C	mH Typ.	mN.m	oz-in	g.cm ²	oz-in ²
24HC2 54.5mm (2.15 in.)	PL24HC2P3150-01	1.2	170.3	1.5	4.7	8	55	7.79	190	1.05
	PL24HC2P3280-01			2.8	1.4	2.3				
24HC3 76.5 mm (3.01n.)	PL24HC3P3150-01	1.7	241.2	1.5	4.9	9.3	70	9.92	340	1.87
	PL24HC3P3280-01			2.8	1.4	2.7				
24HC4 45.5 mm (1.79in.)	PL24HC4P3150-01	0.9	127.7	1.5	6.3	9.4	32	4.54	130	0.72
	PL24HC4P3280-01			2.8	1.7	2.2				

Mechanical Dimension

SERIES	L	Mass	Ø
	mm (in.)	kg (lb.)	mm (in.)
24HC2	54.5 (2.15)	0.80 (1.76)	6.35 (0.25)
24HC3	76.5 (3.01)	1.3 (2.87)	8 (0.315)
24HC4	45.5 (1.79)	0.5 (1.10)	6.35 (0.25)

