

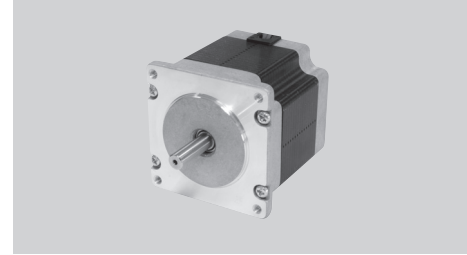


KLS ELECTRONIC CO.,LTD

KLS23-23HS SERIES 1.8°

■ Key Features

- High Torque
- High Efficiency
- High Accuracy



■ General Specifications

- Bi-polar

Series & Length	Model Number	Holding Torque		Rated Current	Resistance per Phase	Inductance per Phase	Detent Torque		Rotor Inertia	
		N.m Typ.	oz-in Typ.	A	ohms ± 10%@20°C	mH Typ.	mN.m	oz-in	g.cm ²	oz-in ²
23HS0 38.5 mm (1.52 in.)	ML23HS0P4100-01	0.75	106.5	1.0	4.00	10.5	30	4.3	105	0.58
	ML23HS0P4140-01			1.4	2.10	5.40				
	ML23HS0P4210-01			2.1	1.00	2.30				
	ML23HS0P4280-01			2.8	0.60	1.35				
	ML23HS0P4350-01			3.5	0.36	0.85				
23HS1 47.5 mm (1.87in.)	ML23HS1P4100-01	1.1	156	1.0	5.2	19	35	5.0	165	0.91
	ML23HS1P4140-01			1.4	2.75	9.8				
	ML23HS1P4210-01			2.1	1.2	4.1				
	ML23HS1P4280-01			2.8	0.73	2.5				
	ML23HS1P4350-01			3.5	0.46	1.6				
23HS4 42.5 mm (1.67in.)	ML23HS4P4100-01	0.93	132	1.0	4.6	12.8	32	4.5	135	0.74
	ML23HS4P4140-01			1.4	2.45	6.5				
	ML23HS4P4210-01			2.1	1.1	2.9				
	ML23HS4P4280-01			2.8	0.65	1.65				
	ML23HS4P4350-01			3.5	0.42	1.05				
23HS8 54.5 mm (2.15 in.)	ML23HS8P4100-01	1.4	198.6	1.0	6.1	25.6	45	6.4	215	1.18
	ML23HS8P4140-01			1.4	3.15	13.1				
	ML23HS8P4210-01			2.1	1.4	5.8				
	ML23HS8P4280-01			2.8	0.85	3.3				
	ML23HS8P4350-01			3.5	0.53	2.1				
23HS9 66.5 mm (2.62 in.)	ML23HS9P4100-01	2.0	283.8	1.0	8	28	70	9.9	295	1.62
	ML23HS9P4140-01			1.4	4.1	14.5				
	ML23HS9P4210-01			2.1	1.8	6.5				
	ML23HS9P4280-01			2.8	1.05	3.7				
	ML23HS9P4350-01			3.5	0.65	2.4				
23HSA 76.5 mm (3.01 in.)	ML23HSAP4100-01	2.3	326.3	1.0	9.5	39	75	10.6	365	2.01
	ML23HSAP4140-01			1.4	4.8	20				
	ML23HSAP4210-01			2.1	2.1	8.4				
	ML23HSAP4280-01			2.8	1.25	5				
	ML23HSAP4350-01			3.5	0.78	3.3				