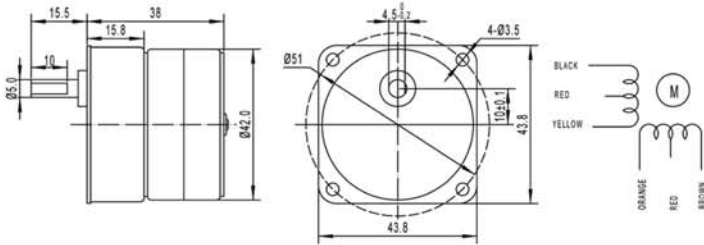


KLS23-GM43-42BY 43mm gearbox plus 42by stepping motor

- Small size dc gear motor with low speed and big torque
- 43mm gear motor provide 0.5Nm torque and more reliable
- Suitable to small diameter, low noise and big torque application
- Reduction Ratio: 25、50、75、100、150



Gear Motor Dimensions (mm)



### Stepping Gear motor Technical Data

Motor model No.	Rated voltage	No.of Phase	Step Angle	Gear Ratio	Resistance	Holding Torque	current	Pull in Rate	
	VDC				Ω	g.cm	mA	pps	
<b>GM43-42BY-25</b>	24	4	7.5°	1/25	300	10000	100	300pps	
<b>GM43-42BY-50</b>	12	4	7.5°	1/50	30	8000	400	300pps	
<b>GM43-42BY-100</b>	12	4	7.5°	1/100	30	15000	400	300pps	