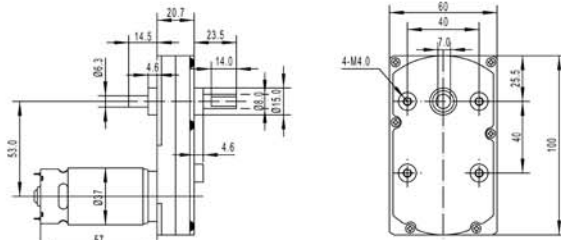


KLS23-GM100F-555PM 100×60mm Eccentric out shaft gearbox plus 555PM DC motor

- Small size dc gear motor with low speed and big torque
- 100×60mm gear motor provide 5.0Nm torque max and more reliable
- Suitable to small diameter, low noise and big torque application
- Dc Gear motors can match encoder, 12ppr
- Reduction Ratio: 37、67、111、222、293、365、583、772、960



Gear Motor Dimensions (mm)



Motor Technical Data

Motor model No.	Rated voltage	No-load speed	No-load current	Rated speed	Rated torque	Rated current	Output power	Stall torque	Stall current
	VDC	r/min	mA	r/min	g.cm	mA	W	g.cm	A
TRS-555PM-1233	12	3300	200	2800	200	1000	5.7	1150	5.5
TRS-555PM-1260	12	6000	300	5250	290	2400	16	2200	15.0
TRS-555PM-2440	24	4000	150	3150	200	700	6.4	1000	2.7

Gear motor Technical Data

Gearbox with motor; GM100F-555PM-1233-XXX

	37	67	111	222	293	365	583	772	960
Reduction ratio	37	67	111	222	293	365	583	772	960
Length mm	20.7	20.7	20.7	20.7	20.7	20.7	20.7	20.7	20.7
No-load speed rpm	85	48	29	15	11	9	6	4	3
Rated speed rpm	75	42	25	13	10	8	5	3	2
Rated torque kg.cm	4.4	8	13	22	29	36	50	50	50
Max.momentary tolerance torque kg.cm	26	46	76	128	150	150	150	150	150

Gearbox with motor

GM100F-555PM-1260-XXX

	37	67	111	222	293	365	583	772	960
Reduction ratio	37	67	111	222	293	365	583	772	960
Length mm	20.7	20.7	20.7	20.7	20.7	20.7	20.7	20.7	20.7
No-load speed rpm	155	87	53	27	20	16	10	8	6
Rated speed rpm	140	78	47	24	18	14	9	7	5
Rated torque kg.cm	6	12	19	32	42	50	50	50	50
Max.momentary tolerance torque kg.cm	49	88	147	150	150	150	150	150	150

Gearbox with motor

GM100F-555PM-2440-XXX

	37	67	111	222	293	365	583	772	960
Reduction ratio	37	67	111	222	293	365	583	772	960
Length mm	20.7	20.7	20.7	20.7	20.7	20.7	20.7	20.7	20.7
No-load speed rpm	100	58	36	18	13	11	7	5	4
Rated speed rpm	85	47	28	14	11	9	5	4	3
Rated torque kg.cm	4.4	8	13	22	29	36	50	50	50
Max.momentary tolerance torque kg.cm	26	46	76	128	150	150	150	150	150