



SMD PTC RESETTABLE FUSE

KLS5-SMD0805 (SMD 0805 PTC RESETTABLE FUSE)

Terminal Pad Solderability:
Meets EIA Specification RS186-9E
And ANSI/J-STD-002 Category 3.

Terminal Pad Materials:
Tin-plated Nickel-Copper

Lead-Free, RoHS Compliant
Marking:
Part Identification
1= 010

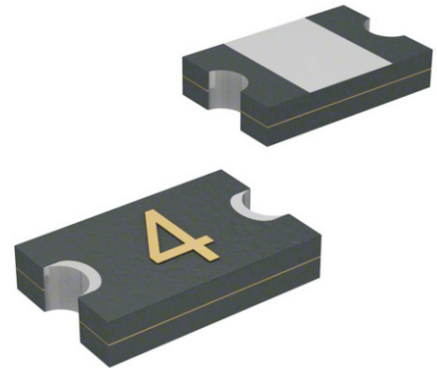


TABLE I. DIMENSIONS:(Unit:mm)

Model	Marking	A		B		C		D	E
		Min.	Max.	Min.	Max.	Min.	Max.	Min.	Min.
SMD0805-010	1	2.00	2.20	1.20	1.50	0.50	1.00	0.20	0.10
SMD0805-020	2	2.00	2.20	1.20	1.50	0.45	1.00	0.20	0.10
SMD0805-020-24V	2	2.00	2.20	1.20	1.50	0.50	1.20	0.20	0.10
SMD0805-035	3	2.00	2.20	1.20	1.50	0.45	1.00	0.20	0.10
SMD0805-050	5	2.00	2.20	1.20	1.50	0.30	0.60	0.20	0.10
SMD0805-075	7	2.00	2.20	1.20	1.50	0.40	1.00	0.20	0.10
SMD0805-100	0	2.00	2.20	1.20	1.50	0.50	1.10	0.20	0.10
SMD0805-100-12V	0	2.00	2.20	1.20	1.50	0.50	1.10	0.20	0.10
SMD0805-110	0	2.00	2.20	1.20	1.50	0.50	1.20	0.20	0.10
SMD0805-125	12	2.00	2.20	1.20	1.50	0.50	1.20	0.20	0.10

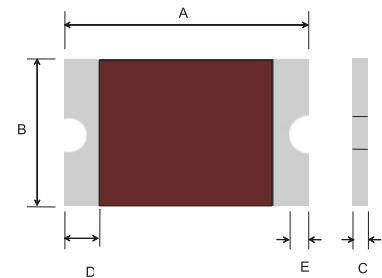


TABLE II. PERFORMANCE RATINGS:

Model	Marking	V _{max} (Vdc)	I _{max} (A)	I _{hold} @25°C (A)	I _{trip} @25°C (A)	P _d Typ. (W)	Maximum Time To Trip		Resistance		
							Current (A)	Time (Sec)	R _{i min} (Ω)	R _{i typ} (Ω)	R _{1 max} (Ω)
SMD0805-010	1	15.0	100	0.10	0.30	0.50	0.5	1.50	1.000	2.500	6.000
SMD0805-020	2	9.0	100	0.20	0.50	0.50	8.0	0.02	0.650	1.700	3.500
SMD0805-020-24V	2	9.0	100	0.20	0.50	0.50	8.0	0.02	0.650	1.700	3.500
SMD0805-035	3	6.0	100	0.35	0.75	0.50	8.0	0.10	0.250	0.650	1.200
SMD0805-050	5	6.0	100	0.50	1.00	0.50	8.0	0.10	0.150	0.420	0.850
SMD0805-075	7	6.0	40	0.75	1.50	0.60	8.0	0.20	0.090	0.185	0.385
SMD0805-100	0	6.0	100	1.00	1.95	0.60	8.0	0.30	0.060	0.120	0.230
SMD0805-100-12V	0	12.0	100	1.00	1.95	0.60	8.0	0.30	0.060	0.120	0.230
SMD0805-110	0	6.0	100	1.10	2.20	0.60	8.0	0.30	0.060	-	0.210
SMD0805-125	12	6.0	100	1.25	2.50	1.50	8.0	0.60	0.030	-	0.140

ORDER INFORMATION

Product NO.: **KLS5-SMD0805-010**

