



Stereo Jack Series

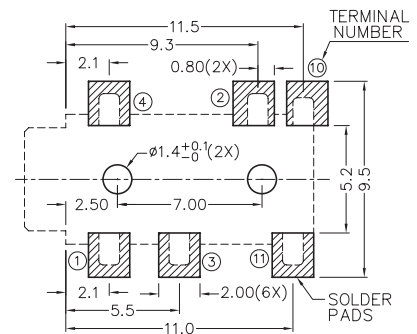
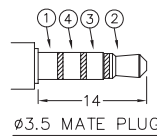
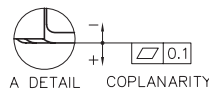
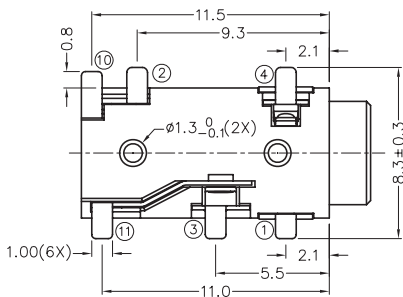
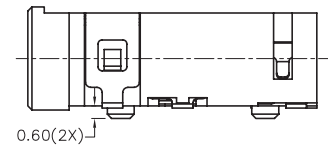
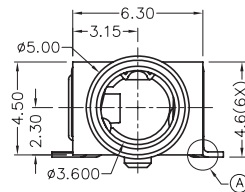
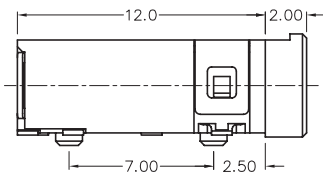
KLS1-SPJ3.5-002 (SMD Stereo Jack)

Technical parameters:

Rated voltage: DC 30 V
 Rated current: 0.5 A
 Contact resistance: 0.03Ω, max
 Insulation resistance: 100MΩ, min
 Pressure: AC500V (50Hz) / 1minute
 Insertion Force :2-20 N
 Life: 50000 times
 Operating Temperature:-30°C ~ 70°C

Material:

Terminal 1 : Copper Alloy
 Terminal 2 : Copper Alloy
 Terminal 3 : Copper Alloy
 Terminal 4 : Copper Alloy
 Terminal 10 : Brass
 Terminal 11 : Brass
 Housing : PA6T



RECOMMENDED
SOLDER PAD LAYOUT

MODEL NO.	SPJ3.5-002	SPJ3.5-002A	SPJ3.5-002B	SPJ3.5-002C
SCHMATIC				

ORDER INFORMATION

Product NO.: KLS1-SPJ3.5-002A

