



## Tact Switch Series

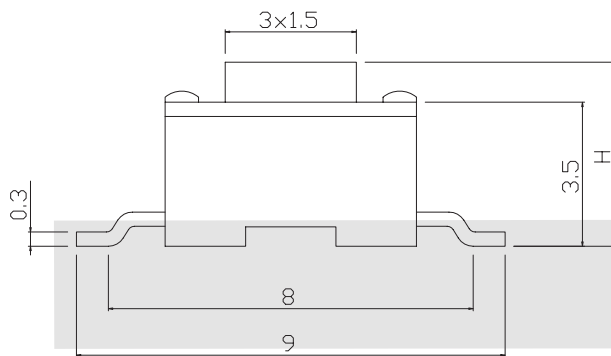
### KLS7-TS3603B 3x6 Tact Switch Series

#### ELECTRICAL

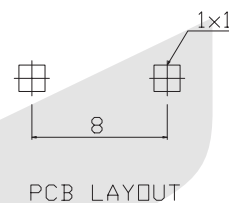
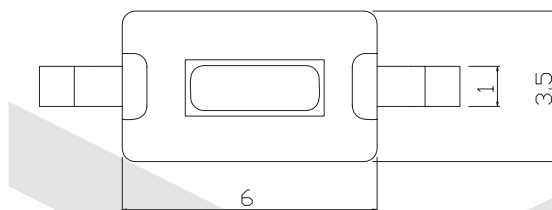
1. Rating: 50mA 12VDC
2. Contact Resistance : 50mΩ max(initial)
3. Insulation Resistance: 100MΩ(minDC 250V)
4. Dielectric Strength : AC250V(50/60Hz for 1minute)
5. Electrically Life: 100000cycles
6. Environment temperature: -30°C~+120°C
7. Operating Force: 180/250(±30gf)
8. Seal temperature: 260°C~ 280°C



#### Dimension (unit: mm)



H
4.3
5.0



## ORDER INFORMATION

**KLS7-TS3603B -4.3-180 -B**

Series No. \_\_\_\_\_ Packing: B=Bulk T=Tape  
 Height: 4.3mm/5.0mm \_\_\_\_\_ Operating Force :180~250gf